



Royal  
Botanic Garden  
Edinburgh

## How to find us

The conference venue is the Conference Room, which is accessed through the Science Buildings' Main Reception at 20A Inverleith Row. *Note this is a different location than the Garden's two public entrances.*

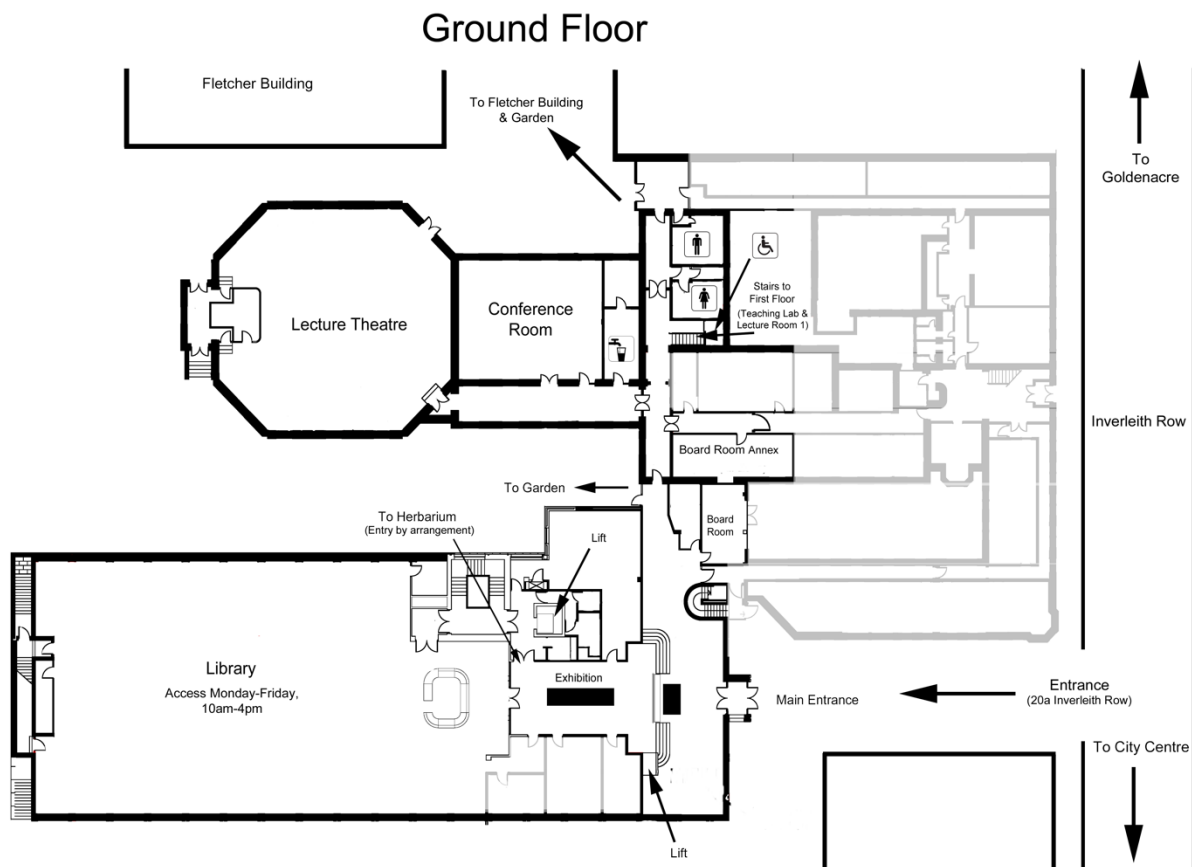
Conference Room, Royal Botanic Garden Edinburgh,  
[20a Inverleith Row, Edinburgh, EH3 5LR](#)



Main Reception is here



The weekday reception is just to the left of this building



## Transport options:

### Air:

[Links to Edinburgh Airport](#) can be made via tram or Airlink100 services to the city centre. A taxi to main reception is approximately 30 min and £25.

### Rail:

RBGE is 1.4 miles from Edinburgh's Waverley Railway station, about 30 min walk or a short taxi or bus ride.

### Bus:

[Lothian Buses](#) services 8, 23 and 27 stop at Warriston Drive, near the main reception. Lothian Buses services 14 and 21 stop on Ferry Road, a short walk away.

### Bicycle:

Bicycle stands can be found at the Science Buildings and both public entrances (East Gate and West Gate).

### Car:

[Street parking is pay-to-park](#). Spaces nearest the Science Buildings are limited to 4 hours. Some full-day paid spaces are available on Inverleith Place, at the side near the Garden's West Gate (John Hope Gateway). Check signs for regulations and tariffs.

You can also car-share at [liftshare](#).