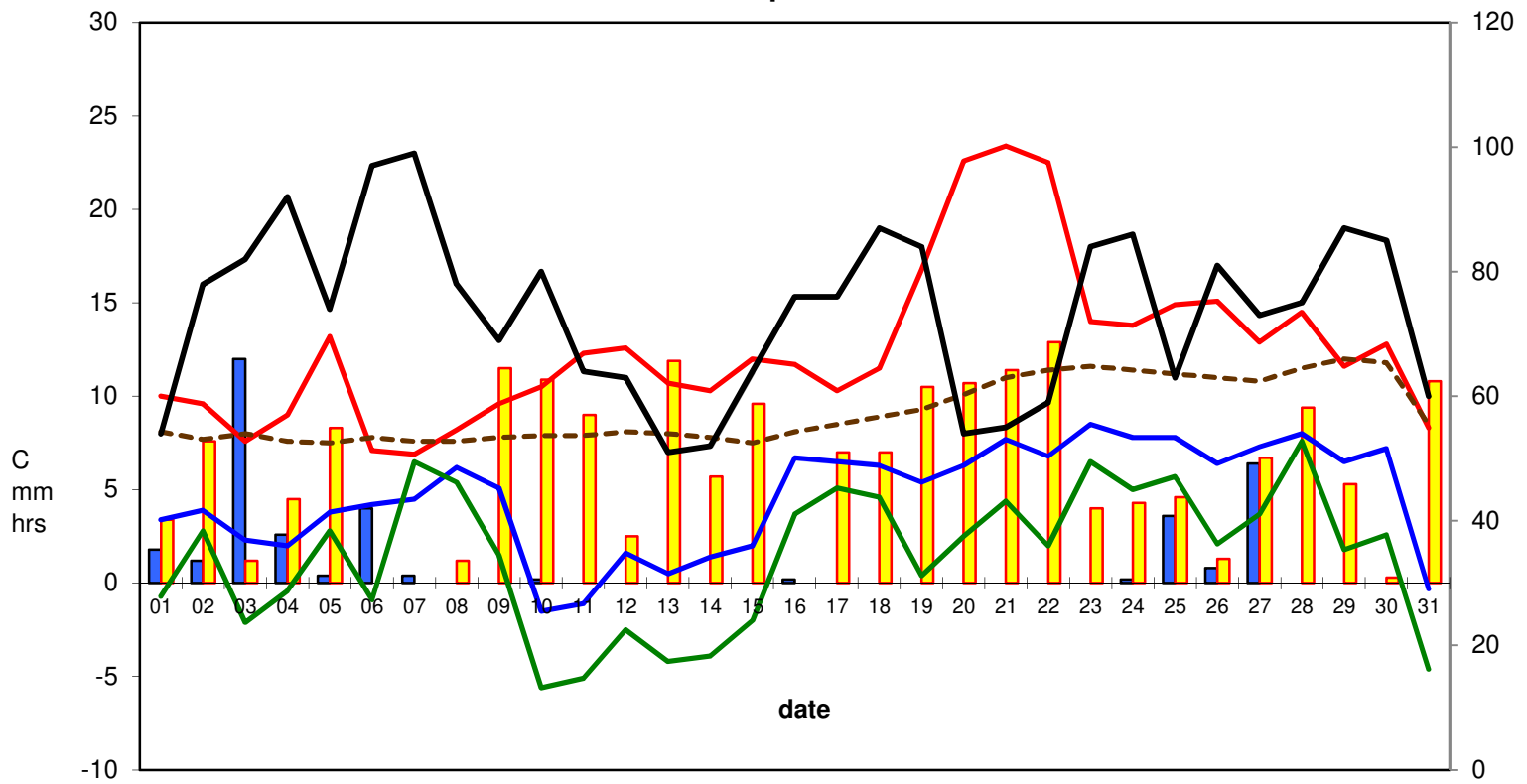


### RBGE Weather April 2019



■ Rainfall 
 ■ Sunshine 
 — Max temp. 
 — Min temp. 
 — Grass min. 
 - - - 30cm soil 
 — RH @ 9am

#### Monthly summary:

	Max temp.	Min temp.	Grass min.	30cm soil	RH %	Rain/Snow	Sunshine	
minimum	6.9	-1.5	-5.6	7.5	51 %	0.0	0.0	
maximum	23.4	8.5	7.6	12.0	99 %	12.0	12.9	<u>total rain:</u> <u>33.8mm</u>
mean	12.5	4.6	1.4	9.2	74 %	1.1	6.2	<u>total sun:</u> <u>193.5hrs</u>

#### long term averages

March	9.42	2.71	-0.77	5.43		1.64	3.64
-------	------	------	-------	------	--	------	------

anomalies\* 3.04 1.91 2.21 3.73

\* red if below, blue if above long term (since 1976) average

-0.55

2.60

66%

171% *grimness: 0.4*

#### averages over the past 12 months and anomalies from long term (1981-2010) averages

	average	anomalies	
air temp. (°C)	10.08	<span style="color: blue;">0.79</span>	
rain (mm per day)	1.43	<span style="color: red;">-0.54</span>	73%
sun (hrs per day)	4.57	<span style="color: blue;">0.66</span>	117%