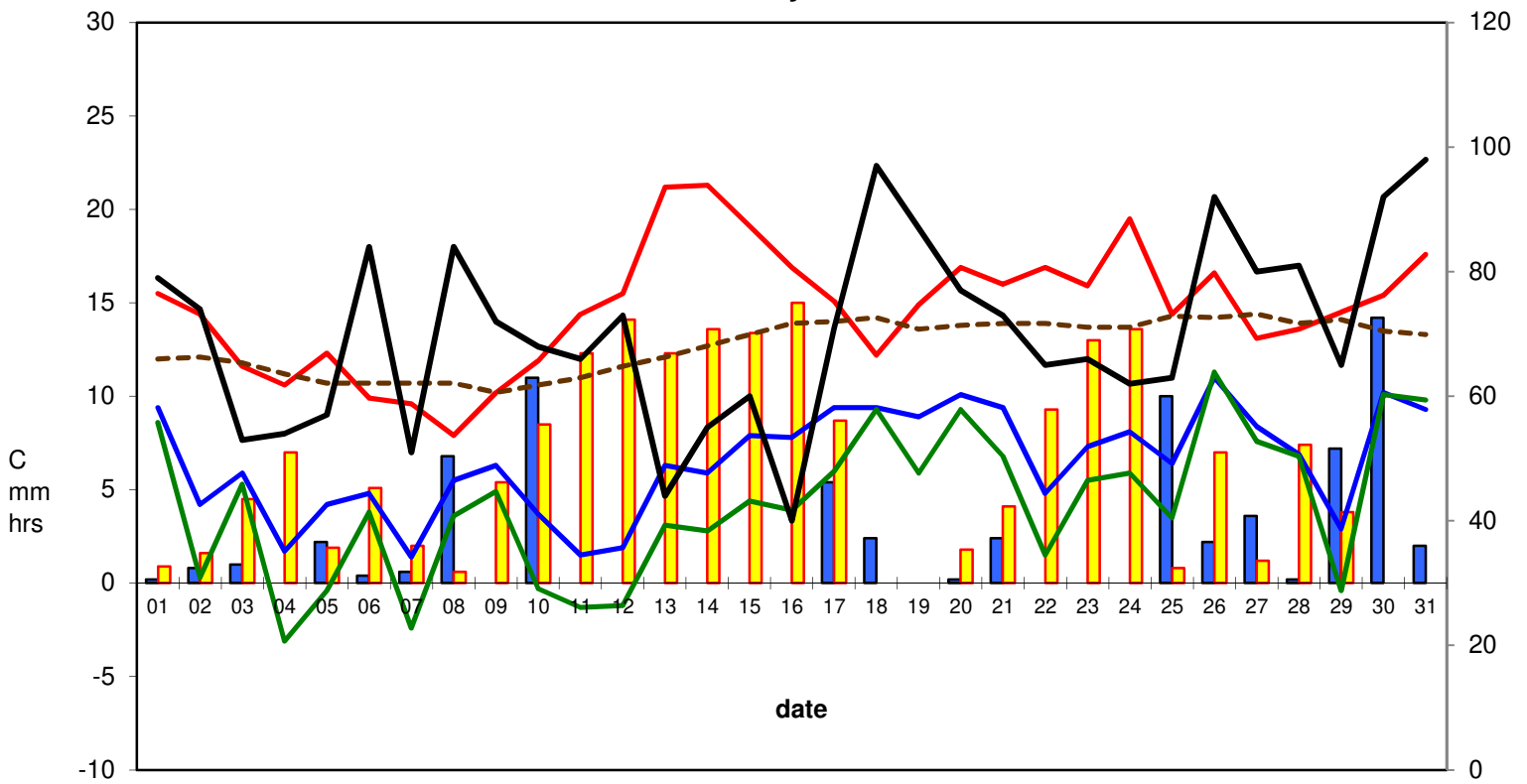


RBGE Weather May 2019



■ Rainfall
 ■ Sunshine
 — Max temp.
 — Min temp.
 — Grass min.
 - - - 30cm soil
 — RH @ 9am

Monthly summary:

	Max temp.	Min temp.	Grass min.	30cm soil	RH %	Rain/Snow	Sunshine	
minimum	7.9	1.4	-3.1	10.2	40 %	0.0	0.0	
maximum	21.3	11.0	11.3	14.4	98 %	14.2	15.0	<u>total rain:</u> <u>72.8mm</u>
mean	14.7	6.5	4.2	12.7	70 %	2.3	6.1	<u>total sun:</u> <u>188.9hrs</u>

long term averages

March	9.42	2.71	-0.77	5.43		1.64	3.64	
-------	------	------	-------	------	--	------	------	--

anomalies*	5.25	3.78	5.00	7.27		0.70	2.45	
------------	------	------	------	------	--	------	------	--

* red if below, blue if above long term (since 1976) average 143% 167% *grimness: 0.9*

averages over the past 12 months and anomalies from long term (1981-2010) averages

	average	anomalies	
air temp. (°C)	10.08	0.79	
rain (mm per day)	1.43	-0.54	73%
sun (hrs per day)	4.57	0.66	117%