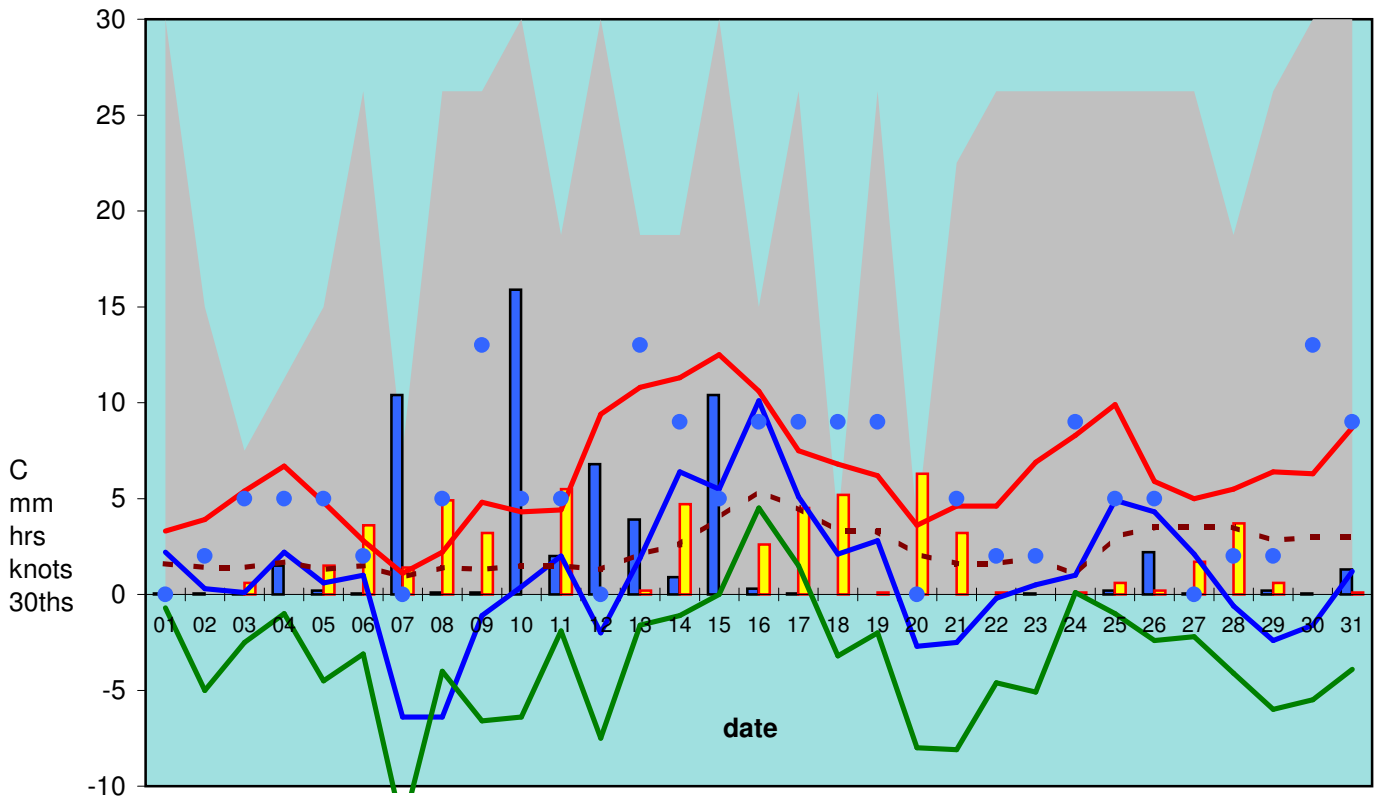


RBGE Weather January 2011



Cloud#
 Rainfall
 Sunshine
 ● Wind#
— Max temp.
 — Min temp.
 — Grass min.
 - - - Soil temp.

cloud (30ths) and wind (knots) are only estimated once daily at 9GMT

Monthly summary:

	Max temp.	Min temp.	Grass min.	Soil temp.	Rain/Snow	Sunshine		
minimum	1.1	-6.4	-12.2	0.9	0.0	0.0		
maximum	12.5	10.1	4.5	5.4	15.9	6.3	<u>total rain:</u>	<u>56.9mm</u>
mean	6.3	1.0	-3.5	2.3	1.8	1.8	<u>total sun:</u>	<u>54.6hrs</u>

long term averages

<i>January</i>	<i>6.73</i>	<i>1.19</i>	<i>-2.51</i>	<i>3.24</i>	<i>2.13</i>	<i>1.72</i>		
----------------	-------------	-------------	--------------	-------------	-------------	-------------	--	--

anomalies*	-0.45	-0.20	-0.98	-0.91	-0.30	0.04		
------------	-------	-------	-------	-------	-------	------	--	--

* red if below, blue if above long term average

86% 102%

averages over the past 12 months and anomalies from long term (1976-2005) averages

	average	anomalies	
air temp. (°C)	8.68	-0.50	
rain (mm per day)	2.24	0.32	117%
sun (hrs per day)	4.17	0.33	109%