



Royal
Botanic Garden
Edinburgh

What's on

Spring 2019



www.rbge.org.uk

Discover a world of plants



The Royal Botanic Garden Edinburgh, founded in 1670, is a world-renowned centre for plant research, conservation and education. Its four remarkable Gardens – the ‘Botanics’ in Edinburgh, Benmore in Argyll, Logan in Galloway and Dawyck in the Borders grow more than 15,000 species between them, making this one of the richest plant collections in the world. Discover more about this fascinating world of plants through an exciting programme of exhibitions, interactive experiences, events and activities.



Credit: Peter Cairns

Highlights



Scottish Rhododendron Festival

Mon 1 April to Fri 31 May, 10:00–18:00 daily | all ages | displays throughout the Garden | free

Enjoy wonderful displays of rhododendrons at the Royal Botanic Garden Edinburgh, a centre for rhododendron studies since the 19th century. Together, our four Gardens – Edinburgh, Benmore, Dawyck and Logan – have one of the world's richest collections. Explore the superb colours of the rhododendrons that bloom outdoors and the exotic rhododendrons in the Edinburgh Glasshouses. RBGE has the largest cultivated collection of tropical rhododendrons, which thrive in early spring, within the Montane Tropics Glasshouse.

Scottish Rhododendron Festival in association with Discover Scottish Gardens, supported by VisitScotland

The Fourth Cordis Prize for Tapestry

Sat 16 March to Mon 27 May, 10:30–17:30 daily (drop in) | all ages | Inverleith House | free

See the ambitious and skilled use of tapestry weaving techniques in this exhibition of the selected finalists of the biggest international award for tapestry. In bringing together the very best and most ambitious contemporary examples of the discipline from around the world, we celebrate Edinburgh as a centre of excellence for tapestry weaving.

For more details and related events, see pages 8, 16 and 20

Edinburgh Science Festival

Sat 6 to Sun 21 April

The annual Edinburgh Science Festival will return to the Garden again, with an exciting and fun packed programme of family events sure to inspire your inner scientist. Enjoy a series of family friendly drop in events and evening talks linked to the Food Forever photographic exhibition exploring how diversity underpins food security.

For more details and related events, see pages 17–19.

Plants and Gardens



Daily Garden Walks

Daily from 1 April to 31 October, 11:00 & 14:00 (1 hour) | ages 14+ | meet at John Hope Gateway reception | £6

Celebrate spring and early summer by joining our expert Garden Guides on a tour of the Garden. Discover seasonal highlights, hidden treasures and talks of the intrepid adventurers behind the plants on display. Learn about the Garden's valuable rhododendron collection, which is in bloom at this time of year.

Glasshouse Visit

Open daily from 10:00 (closes 17:00) | *Adult £6.50, *Concession £5.50, *Child (15 and under) free

A visit to our Glasshouses is a highlight of the Edinburgh Garden. Enjoy the Victorian Temperate Palm House, the tallest traditional glasshouse in the UK, and see our 200-year-old palm tree in the Tropical Palm House. You can walk through 10 different climate zones, from steamy tropics to arid desert, and see over 3,000 exotic plants. Free to Friends of RBGE.

*includes a small donation for the Garden

Lichen Safari Trail

Available from the John Hope Gateway and East Gate Lodge (daily) | £1 per trail booklet

Pick up a Lichen Safari and explore the hidden, tiny world of lichens at the Botanic. Find out how lichens play a vital role in our environment. There is so much more to these tiny organisms than meets the eye.

Plants and Gardens



Meet the Edible Gardening Team

Every Mon & Tue, 13:00–14:30 & every first Sat of the month, 14:00–16:00
(drop in) | all ages | Demonstration Garden | free

Pop in and look out for the team at work in the garden. Take a walk around our productive garden with the Edible Gardening Project volunteers, find out what jobs need doing in your own garden this season and have your vegetable growing questions answered.

Supported by players of People's Postcode Lottery

Book Group Open Book: Reading Together

Every Thu, 10:30–12:00 (drop in) | ages 16+ | Botanic Cottage | free

If you love reading, come to a book group with a difference, where stories and poems are read aloud and discussed over tea and coffee.

Led by the charity Open Book.

Garden Social for Dementia

First Fri of the month, 10:30–12:00 | ages 16+ | Botanic Cottage | drop in,
up to three per party | free

Free sessions with refreshments. Activities inspired by the Garden for people affected by dementia. Numbers are limited; please arrive a little early to avoid disappointment. Email community@rbge.org.uk for more details or leave a message on **0131 248 2981**.

Plants and Gardens



Botanic Cottage Open Afternoon

First Fri of the month, 13:30–14:30 & 15:00–16:00, First Sat of the month, 15:00–16:00 (drop in) | all ages | Botanic Cottage | free

Join a free drop in at the Botanic Cottage and discover how it was saved and rebuilt. Moved stone-by-stone across the city, exactly 250 years after it was first built, the Botanic Cottage has been reconstructed in its spiritual home. Once again returned to its original purpose as a place of learning and community, a hub for education and engagement activities in one of the world's great gardens.

Cyrenians Community Cook Club

Bi-monthly on Fri | March 8 & 22, April 12 & 26, May 10 & 24, 10:30–13:30 (drop-in) | adults & families | Botanic Cottage | free

Join us for this free meeting of the Community Cook Club. Cyrenians support and run the club with staff and volunteers, sourcing food from FareShare. The club supports members of the community to prepare and enjoy nutritious meals with good company. For more information, email foodeducation@cyrenians.scot



Donate today to bring this dementia- friendly garden to life

Created by one of RBGE's Garden Design Diploma graduates, the Garden of Tranquillity will be a safe, peaceful and sensory greenspace in our Edinburgh Garden for people with dementia. The Garden will:

- Support local people with dementia so that they feel included and can safely experience the therapeutic benefits of being outdoors.
- Inspire visitors with ideas to make their own gardens more dementia-friendly and emphasise how horticulture can promote good health and wellbeing.
- Educate people about the prevalence of dementia and highlight Edinburgh as a world-leader in dementia research.

We need your help to raise £50,000 to bring the Garden of Tranquillity to life.

How to donate

Online - www.rbge.org.uk/appeal

By phone - call **+44 (0)131 552 5339**

By post - send a **cheque** to: Development Office, RBGE, 20a Inverleith Row, Edinburgh EH3 5LR

Please make cheques payable to 'Royal Botanic Garden Edinburgh'.

Exhibitions



Physic Garden Tapestry, sketch by Natalie Taylor

Action Oak

Fri 25 January to Sun 17 March, 10:00–17:45 (drop in) | all ages | Real Life Science Studio, John Hope Gateway | free

There are more ancient oaks in the UK than in the rest of Europe, but British oaks are fighting for their survival. Find out about oaks place in our ecology and heritage and learn how we are helping to safeguard them from pests and disease.

The Friends of RBGE Photography Exhibition

Until 24 March, 10:00–17:45 (drop-in) | all ages | John Hope Gateway | free

An exhibition of the finalists of the Friends of the Royal Botanic Garden Edinburgh's Photography Competition 2018. Vote for your favourite photograph in the People's Choice category, sponsored by Brewin Dolphin.

Organised by the Friends of RBGE

The Thread Runs Both Ways: Cordis Symposium

Sat 16 March, 10:00–16:00 | adults | Lecture Theatre | £65 (£45 concession) | book at thetapestryprize.org/cordis-symposium

To complement the Cordis Tapestry exhibition, the symposium will reference the pivotal role Edinburgh has played in the development of contemporary woven tapestry. This brings together artist, curators, critics and academics to consider 'What is tapestry?' and its future as a creative medium in contemporary art practice.

Food Forever

Sat 6 April to Sun 9 June, 10:00 to 17:45 daily (drop in) | all ages | Ground floor, John Hope Gateway | free

Feeding the world in the face of threats from climate change, pests and diseases depends on our ability to conserve crop genetic diversity and support indigenous communities who are their traditional guardians. This exhibition celebrates the role of agricultural biodiversity in building resilience in a changing world.

Exhibitions



Credit: Nicola Macartney

The Fourth Cordis Prize for Tapestry

Sat 16 March to Mon 27 May, 10:30–17:30 daily (drop in) | all ages | Inverleith House | free

See the ambitious and skilled use of tapestry-weaving techniques in this exhibition of the selected finalists of the biggest international award for tapestry. With the very best and most ambitious contemporary examples of the discipline from around the world, we celebrate Edinburgh as a centre of excellence for tapestry weaving.

Green Gold: Plants from the travels of John Jeffrey

Sat 27 April to Sun 30 June, 10.00–17.45 (drop in) | all ages | Gateway Gallery, John Hope Gateway | free

Green Gold is a new book by Gabriel Hemery about the life of the plant hunter John Jeffrey. On display are five specially commissioned watercolour paintings by Nicola Macartney featuring trees and flowering plants collected by Jeffrey in North America, along with material from our archive.

Green Gold: Adventures of the plant hunter John Jeffrey

Sat 27 April, 15.00–16.00 (drop in) | all ages | Patrick Geddes Room, John Hope Gateway | free | **book via rbge.org.uk**

Join author Gabriel Hemery introducing his new biographical novel *Green Gold*, telling the story of intrepid plant hunter John Jeffrey. Although Jeffrey sent home hundreds of specimens from his travels in America, his disappearance remains a mystery and his journals were never recovered.



Credit: Peter Cairns

Snowdrop and Early Spring Interest Walks

Fri 1, Sat 2, Sun 3, Fri 9, Sat 10 & Sun 11 March, 11:00 | age 14+ | meet at John Hope Gateway reception | £6 | please call 0131 248 2909 to reserve your place

Join an expert Garden Guide on a walk to discover RBGE's fascinating collection of specialist snowdrops and enjoy other early flowering plants that herald the onset of spring.

Part of the Scottish Snowdrop Festival organised by Discover Scottish Gardens.

Art Explorers: Oh Mighty Oak!

Sun 3 March, 13:00–16:00 (drop-in) | all ages | Real Life Science Studio, John Hope Gateway | £3

Join us for an afternoon of creative fun and be inspired to make your own work of art. Marvel at the majesty of the Oak tree and create a colourful 3D artwork that celebrates all the animals, plants and insects that are supported by it.

With Greengage Arts

Peter Cairns: Behind the lens. Beyond the lens

Thu 7 March, 19:00–20:30 | all ages | John Hope Gateway | £8, £6 Members | advance booking essential on **0131 552 5339**

Against a backdrop of stunning imagery, nature and conservation photographer, Peter Cairns, will talk about his journey into photography and why he's as passionate as ever about using imagery to communicate conservation. As guest judge for the Friends of RBGE's Photography Competition 2018, Peter will also be presenting the prizes to the competition winners. There will also be an opportunity to view the Photography Exhibition of all the finalists during the evening.



Wildlife Explorers: Birds Need Homes Too

Sun 10 March, 13:00–15:00 | all ages | Real Life Science Studio, John Hope Gateway

Join the team from Edinburgh RSPB to explore the wildlife of the Garden as it changes through the seasons. Let's help some birds by giving them a home. Make a bird box to help them raise their chicks in a warm safe place. Cost of boxes £5 each, limited availability.

Your Botanic: An Open Evening

Wed 13 March, 18:00 | age 14+ | Lecture Theatre | book online at www.rbge.org.uk/yourbotanics

The need to conserve vulnerable habitats has never been more acute and our Glasshouses play a crucial role in global research and conservation, supporting nearly 45 per cent of the 11,000+ plant species at the Botanic. But, our public and research facilities are in need of restoration and replacement to ensure the best future for our science, horticulture and education. Join us to discover how the ambitious Edinburgh Biomes can create exciting new possibilities for projects around the world. Refreshments will be served prior to the presentations.

Disabled Access Day

Sat 16 March, 10:00–18:00 | all ages | Garden-wide | free

Join us for Disabled Access Day. Enjoy free Glasshouse admission when you mention 'Disabled Access Day' on arrival (last entry is 17:00) or enjoy a Garden Guided Tour. Registered assistance dogs welcome. For more information on the Garden's activities on the day, visit www.rbge.org.uk

Calendar of Events

Regular events

| | |
|---|---|
| Daily from Mon 1 April Scottish Rhododendron Festival | 3 |
| Daily from 1 April Daily Garden Walks | 4 |
| Daily Glasshouse Visit | 4 |
| Daily Lichen Safari Trail | 4 |
| Every Mon, Tue & first Sat of Month Meet the Edible Gardening Team | 5 |
| Every Thu Book Group Open Book: Reading Together | 5 |
| First Fri of month Garden Social for Dementia | 5 |
| First Fri and Sat of the month Botanic Cottage Open Afternoon | 6 |
| Bi-monthly on Fri Cyrenians Community Cook Club | 6 |

Exhibitions

| | |
|--|------|
| Fri 25 January to Sun 17 March Action Oak | 10 |
| Daily until 24 Mar The Friends of RBGE Photography Exhibition | 8 |
| Sat 16 Mar The Thread Runs Both Ways Cordis Symposium | 8 |
| Daily from Sat 16 Mar to Mon 27 May The Fourth Cordis Prize for Tapestry | 3, 9 |
| Sat 6 April to Sun 9 June Food Forever | 9 |
| Sat 27 April to Sun 30 June Green Gold: Plants from the travels of John Jeffrey | 9 |
| Sat 27 April Green Gold: Adventures of the plant hunter John Jeffrey | 9 |

March

| | |
|---|----|
| Fri 1 & 9, Sat 2 & 10, Sun 3 & 11 Snowdrop and Early Spring Interest Walks | 10 |
| Sun 3 Art Explorers: Oh Mighty Oak! | 10 |
| Thu 7 Peter Cairns: Behind the lens. Beyond the lens | 11 |
| Sun 10 Wildlife Explorers: Birds Need Homes Too | 11 |
| Wed 13 Your Botanics – An Open Evening | 11 |
| Sat 16 Disabled Access Day | 11 |
| Sat 23 & Sun 24 The Caley Junior Groups' Competition | 14 |
| Thu 28 Gardening on the London Royal Estate | 14 |

Calendar of Events

April

| | |
|---|----|
| Sat 6 to Sun 21 Edinburgh Science Festival | 3 |
| Sat 6 to Mon 22 Easter Trail | 15 |
| Sun 7 Art Explorers | 15 |
| Sun 7 Science is Beautiful | 17 |
| Tue 9 Diet: Design and Diversif | 17 |
| Wed 10 Disease Detectives | 17 |
| Thu 11 Wild Frontier | 18 |
| Fri 12 Call of Nature | 18 |
| Fri 12 to Sun 14 Frankenstein's Plants | 18 |
| Sun 14 Dinner with Darwin | 19 |
| Sun 14 Wildlife Explorers – Misunderstood Birds: Pesky Pigeons and Greedy Gulls | 15 |
| Thu 18 Sourcing Healthy Food as the World Changes= | 19 |
| Sun 21 Apple of My Eye | 19 |
| Thu 25 Private view of the Fourth Cordis Prize for Tapestry Exhibition and Friends of RBGE AGM | 16 |
| Sun 28 Spring into Edible Gardening | 16 |

May

| | |
|---|----|
| Sun 5 Art Explorers – Weave a wonder = | 20 |
| Sun 12 Wildlife Explorers – Nests: From Egg to Fledge | 20 |
| Thu 16 SSBA Cottage Forum Meetings – Scottish Plant Lore | 20 |

Dawyck

| | |
|---|----|
| Until Mon 29 July Plants from the Woods and Forests of Chile | 22 |
| Sat 16 March Disabled Access Day | 22 |
| Sat 27 April, Sat 11 & Sat 25 May Early Morning Bird Walks | 23 |
| Mon 1 Apr to Fri 31 May Scottish Rhododendron Festival | 23 |

March



The Caley Junior Groups' Competition

Sat 23 to Sun 24 March, 12:00–17:00 (drop-in) | all ages | Real Life Science Studio, John Hope Gateway | free

Enjoy the spring bulb display put on by local Schools and young people's groups participating in The Caley Junior Groups' Competition in the John Hope Gateway. See the entries and take part in hands-on gardening-related activities.

Gardening on the London Royal Estate

Thu 28 March, 19:00–20:30 | all ages | Lecture Theatre, 20a Inverleith Row | £10, £7 Members | book in advance on 0131 552 5339 or pay on the door

Mark Lane, Gardens Manager for the Royal Household will take us on a visual tour of the gardens of Buckingham Palace, Clarence House and Kensington Palace & Marlborough House. Mark has worked to enhance the gardens both from a botanical and aesthetic point of view, increasing the general plant collection and creating a National Collection of Mulberries, coupled with notable collections of Oaks, Hawthorns, Limes and Birches.

Organised by the Friends of RBGE



Easter Trail

Sat 6 to Mon 22 April, 10:00–16:30 daily | age 3+ | Pick up a trail booklet from John Hope Gateway reception | £2 per trail

Join the Botanics Bunny on a quest to explore new frontiers in our family Easter Trail! Complete the trail and receive your yummy Easter treat.

Supported by Mackie's of Scotland

Art Explorers

Sun 7 April, 13:00–16:00 (drop-in) | all ages | Real Life Science Studio, John Hope Gateway | £3

Join us for an afternoon of creative fun and be inspired to make your own work of art.

With Greengage Arts

Wildlife Explorers – Misunderstood Birds: Pesky Pigeons and Greedy Gulls

Sun 14 April, 13:00–15:00 | all ages | Terrace Cafe

Join the team from Edinburgh RSPB to explore the wildlife of the Garden as it changes through the seasons. Why do some birds get such a bad press? Pigeons are sometimes referred to as Flying Rats; gulls are demonised because they sometimes steal people's food and magpies and crows eat the chicks of small birds. Are these birds really that bad or how much is it our fault?

April



Private view of the Fourth Cordis Prize for Tapestry Exhibition and Friends of RBGE AGM

Thu 25 April, AGM 18:00, Tour 18:45– 20:00 | all ages | Inverleith House | AGM Free, Tour £7, £5 Members | book exhibition tour in advance on **0131 552 5339** or pay on the door

Join us for a guided tour of this exhibition which showcases the selected finalists of the biggest international award for tapestry. See the very best and most ambitious contemporary examples of tapestry weaving from around the world. The Friends of the Royal Botanic Garden Edinburgh's AGM will take place before the tour at 6pm.

Spring into Edible Gardening

Sun 28 April, 13:30–16:30 (drop-in) | all ages | Demonstration Garden | free
Come and join in with the Edible Gardening Project as we get growing in the vegetable patch for another year. With information for budding gardeners, fun family friendly activities and fresh garden tasters.

Supported by Players of People's Postcode Lottery



Edinburgh Science Festival events

Science is Beautiful

Sun 7 April, 14:00 | age 14+ | Lecture Theatre | £5 | book online at www.sciencefestival.co.uk

Down the ages, plants have been associated with beauty. Microscopes reveal that what's true of plants in our everyday experience is also true of their micro-structure. Things that are invisible to the naked eye turn out to be stunningly beautiful. Join botanist Dr Louis Ronse De Craene and Colin Salter, author of *Science is Beautiful: Botanical Life*, for a journey into the inner workings of plants that will combine wonder with the science made possible by microscopes.

Diet: Design and Diversify

Tue 9 April, 12:00–16:00 (drop-in) | all ages | Real Life Science Studio, John Hope Gateway | free

Join scientists from the Rowett Institute and BioSS as they help you understand healthy diets and give you the opportunity to design your own healthy menu. Use the 'Number Muncher Diets' calculator to work out what a healthy diet looks like and take part in hands-on activities to learn about food and health.

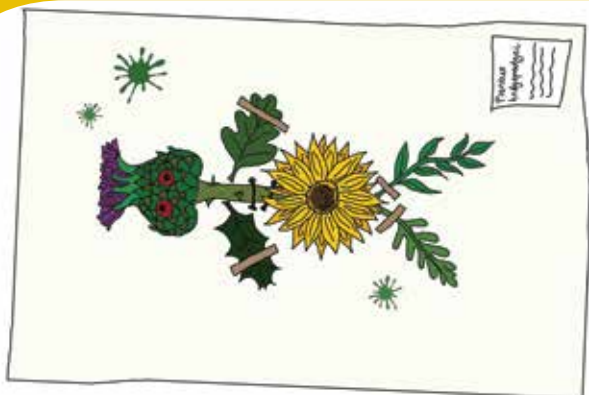
With the Rowett Institute and BioSS

Disease Detectives

Wed 10 April, 12:00–16:00 (drop-in) | all ages | Real Life Science Studio, John Hope Gateway | free

There are an increasing number of viruses, bacteria and parasites that can cause diseases in both animals and people. To help us tackle these diseases it is really important to be able to get a rapid and quick diagnosis. In this family-friendly and hands-on activity you will be a Disease Detective and to out some of the different tests used in labs to help find out what bugs are making us and our animals feel unwell.

With Moredun



Edinburgh Science Festival events

WildFrontier

Thu 11 April, 18:00 | age 14+ | Lecture Theatre | £5 | book online at www.sciencefestival.co.uk

The wild plants related to crops are arguably the most important on the planet. They hold the genetic key to dealing with the growing number of threats to our food supply and doing it in a much more environmentally friendly way. Join botanist Dr Tiina Sarkinen on the wild frontier of food that is bringing botanists and crop scientists together in pursuit of sustainable farming solutions based on biology rather than chemistry.

Call of Nature

Fri 12 April, 10:30, 12:30, 14:30 | age 5-8 years | £6 | Meet at the John Hope Gateway | book online at www.sciencefestival.co.uk

The Institute of Eggsperts needs you and it might get muddy! Join our playful field trip and expert fools to explore the local landscape in search of a rare egg, finding laughter and wonder in the most unexpected places. A playful performance that puts young explorers in the driving seat using character clowning, improvisation, puppetry and adventure.

Frankenstein's Plants

Fri 12 April to Sun 14 April, 12:00–16:00 (drop-in) | all ages | Real Life Science Studio, John Hope Gateway | free

Join the RBGE science team and create a completely unique specimen from the pressed plants provided. Give your creation a name and upload an image to a digital herbarium so others can see it. You'll be able to discover why plant specimens and digital images are so important for research, and how scientists use the estimated 3 million plant specimens in our collection.



Edinburgh Science Festival events

Dinner with Darwin

Sun 14 April, 14:00 | age 14+ | Lecture Theatre | £5 | book online at www.sciencefestival.co.uk

Our closest relatives are the great apes. They are vegans and so were our primate ancestors, yet humans are capable of living on only plants or mainly meat. How did evolution cut us such slack? The one choice evolution has not allowed us is cooking – it is compulsory and you may ask why. Evolutionary ecologist Professor Jonathan Silvertown provides the answers to these and other digestive puzzles.

Sourcing Healthy Food as the World Changes

Thu 18 April, 18:00 | age 14+ | Lecture Theatre | free | book online at www.sciencefestival.co.uk

Global demand for food continues to grow and we are more concerned than ever that food should be safe and nutritious. Climate change predictions highlight serious challenges for future food production, but in the meantime, agriculture makes a significant contribution to greenhouse gas emissions. Professor Bill Davies explores the hard decisions we need to make, and how plant science provides opportunities to create the kind of world we want to live in.

Apple of My Eye

Sun 21 April, 14:00 | age 14+ | Lecture Theatre | £5 | book online at www.sciencefestival.co.uk

Sometimes loving something can have unintended consequences. Threats to the Scottish wild cat through crossbreeding with domestic moggies have been a concern for years, but wild plants can face the same problems. Our love of apples could be pushing one of Scotland's rarest native trees towards extinction. Geneticist Dr Markus Ruhsam explores the evidence for a genetic signature from one of our most popular healthy snacks—the apple—in native crab apple trees.



Art Explorers – Weave a wonder

Sun 5 May, 13:00–16:00 (drop-in) | all ages | Real Life Science Studio, John Hope Gateway | £3

Join us for an afternoon of creative fun. Inspired by the fourth Cordis Prize for Tapestry exhibition in Inverleith House, we will create a simple and playful woven wall hanging, incorporating natural and upcycled materials.

With Greengage Arts

Wildlife Explorers – Nests: From Egg to Fledge

Sun 12 May, 13:00–15:00 | all ages | Terrace Cafe

Join the team from Edinburgh RSPB to explore the wildlife of the Garden as it changes through the seasons. How easy is it to make a nest? Could you do it? Try your hand at making nests and learning just how hard it is to raise a brood of hungry chicks.

SSBA Cottage Forum Meetings: Scottish Plant Lore

Thu 16 May, 17:00–19:30 | adults | Botanic Cottage | free | **book via www.eventbrite.com/e/scottish-plant-lore**

Dr Greg Kenicer talks about the development of his book *Scottish Plant Lore*, along with discussion of the botanical illustrations. Please bring along food if you would like to participate in an exclusive evening picnic in the Garden outside the Botanic Cottage.

Image: Helen Pugh.



Become a Friend

and help the Garden grow

Join the Royal Botanic Garden
Edinburgh as a Friend and
help us to explore, conserve
and explain the world of
plants for a better future

For more information call us
on **0131 552 5339** or visit
www.rbge.org.uk

The Royal Botanic Garden
Edinburgh is a charity
registered in Scotland
(number SC007983).



Royal
Botanic Garden
Edinburgh

Dawyck Botanic Garden



This is undoubtedly one of the best times of the year to visit Dawyck, a renowned woodland garden, just an hour's drive from Edinburgh. Swathes of majestic snowdrops which bloom in early spring carpeting the banks of Scrape Burn are followed by clusters of bluebells, early flowering rhododendrons and Meconopsis (Himalayan blue poppies).

Plants from the Woods and Forests of Chile

Until Mon 29 July, from 10:00 daily | The Studio | Free

A selection of specially commissioned unique watercolour paintings shows the remarkable beauty and diversity of plants native to Chile in this exhibition. The paintings attest to the skill of Gülnur Ekşi, Işık Güner and Hülya Korkmaz, three award-winning artists from Turkey, and highlight the important research and conservation work undertaken by RBGE. The exhibition accompanies a book published by RBGE, *Plants from the Woods and Forests of Chile*.

Disabled Access Day

Sat 16 March, 10:00

Dawyck is participating in Disabled Access Day 2019. There will be free entry to the Garden all day for those who mention "Disabled Access Day" on arrival. Visitors can join a tour of the Garden, which will be specially tailored for wheelchairs across accessible paths. The tour will start at 14:00.

Please call **01721 760 254** to book. For more information about Disabled Access Day, visit www.disabledaccessday.com

Dawyck Botanic Garden



Early Morning Bird Walks

Sat 27 April, Sat 11 & Sat 25 May, 07:00 - 08:30 | free with Garden admission | book on **01721 760 254**.

Come on one of Dawyck's Early Morning Bird Walks and discover just how many species of bird can be found at the Garden. Long before the Garden's normal opening time you will get the chance to explore, hear the early morning birdsong and count the species of bird you spot. Don't forget to bring your binoculars.

Scottish Rhododendron Festival

Mon 1 Apr to Fri 31 May, 10:00-17:00 | free with Garden admission

Dawyck is taking part in this year's Scottish Rhododendron Festival organised by Discover Scottish Gardens. Enjoy a walk around Dawyck's unique and valuable rhododendron collection. The Scrape Glen and Rhododendron Walk are in colour from April onwards.



Credit: Brenda White

Short Courses

We run weekly classes and weekend workshops in many subjects from botany and horticulture, to herbology, garden history, art and wellbeing. For beginners to advanced we aim to provide something for all! Our terms start in September, January and April each year. For current course listings pick up a copy of our Programme or view it online: www.rbge.org.uk/shortcourses

Professional Courses

For those that wish to take their studies further and gain a qualification we have a fantastic range of professional courses including Certificates, Diplomas and BSc & MSc Degrees. As well as courses that run at RBGE we are also have a range of blended/distance learning courses allowing you to study with us from wherever you are.

www.rbge.org.uk/professionalcourses

Schools and Teacher CPD

We offer a high-level curriculum focussed schools programme for primary and secondary schools, as well as bespoke CPD training for teachers. Our programme offers unique adventures from rainforest to teddy bears picnics and is a wonderful way to bring the subjects alive.

www.rbge.org.uk/schools

To find out more or to book on any of our courses please contact us on **0131 248 2937** or education@rbge.org.uk

Education Highlights



Short courses and weekend workshops can be booked by calling the Education Department on **0131 248 2937**. Here are just a few of the courses we have running over the next few months. Full details available online.

Workshops

■ Introduction to Botany

Sat 9–Sun 10 March | 10:00–16:00 | £80/£72 for members

■ Millefleure: Herbal Soaps & Salts

Sat 16 March | 10:00–16:00 | £60/£54 for members

■ Introduction to Mosaics - Decorative Tiles

Sat 23 March | 10:30–16:30 | £60/£54 for members

■ Pinhole Photography

Sat 27 April | 10:00–16:00 | £85/£76.50 for members

■ Wayside Remedies

Sat 4 May | 10:00–16:00 | £60/£54 for members

■ Two Feet, One Mind—A Contemplative Walking Workshop

Tues 7, 14, 21 OR 28 May | 18:00–20:00 | £15

Short Courses

■ Garden Design for Gardeners

Tue 23 April–25 June | 10:00–12:00 | £100/£90 for members

■ Tapestry Weaving

Tue 23 April–11 June | 10:00–12:30 | £120/£108 for members

■ The Rose—An Appreciation

Tue 23 April–25 June | 18:30–21:00 | £100/£90 for members

■ Herbs from the Highlands

Wed 24 April–26 June | 18:30–21:00 | £140/£126 for members

■ Nordic Walking (poles provided)

Thu 25 April–27 June | 13:45–14:45 | £65/£58.50 for members

Food and Drink



Come and enjoy the Spring season at the Botanics. We have a tempting seasonal menu with delicious options for everyone. All locations are open daily all year round from 10:00.

The Terrace Café

The Terrace Café located in the heart of the Edinburgh Garden, complete with stunning views across the Edinburgh skyline has been completely transformed. Why not visit for, informal service and a broad range of speciality coffees, teas, home bakes, soups, light snacks, salads and freshly prepared hot dishes, all served within a fresh and vibrant interior.

The Gateway Restaurant

Enjoy this delightful space for breakfast, lunch and afternoon tea with a beautiful outlook onto the Garden. You'll find an array of freshly prepared hot dishes and lighter options, many including produce grown right here in the Garden.

To book a table, please call **0131 552 2674**, email info@gatewayrestaurant.net or visit the restaurant website www.gatewayrestaurant.net. Booking, though not essential, is advised.

East Gate Coffee Bar

A great refreshment stop near the Garden's East Gate, where you can find a selection of snacks, sandwiches and speciality teas and coffees for take away.

Your Event at the Garden

The Garden is the perfect location for holding your special event and has some delightful venues for Weddings and other private or family occasions including a full festive programme. Please contact our Sales Team for more information: **0131 552 1974** or sales@gatewayrestaurant.net

Shopping



Come and enjoy the spring season at the Botanics. While you are here, why not pay the Botanics Shop a visit? Whether you are looking for a special gift or a treat for yourself there is a wide selection of garden-inspired gifts on offer, ranging from exclusive homeware, jewellery, accessories and stationery to specialist books and children's gifts.

This season we have a wonderful selection of snowdrop inspired products including ceramics and jewellery, selected to celebrate the Snowdrop Festival. Later in the season look out for a new range of fern inspired products for the home, illustrated with stunning images from the RBGE archives as well as a wide array of Easter related gifts.

If you are looking for unusual plants, seeds or bulbs, good quality garden tools, planters or accessories for the garden then do visit our Garden shop. Our plants are carefully sourced from many local growers with an emphasis on quality. This spring we are launching our own exclusive range of small Botanics planters to complement our beautiful plant selection. Our knowledgeable staff are also on hand to assist with your gardening questions.

The Botanics Shop is located at the John Hope Gateway West Gate entrance and is open daily in line with garden opening times.

Become an RBGE Member and enjoy a discount at the shop (some exclusions apply)

Every purchase supports the important work of the Garden

How to Find Us



Royal
Botanic Garden
Edinburgh

**Arboretum Place or Inverleith Row,
Edinburgh EH3 5LR**

Garden admission is free. Charges for Glasshouses: Adult £7,
Concessions £6, under 16s free*. Open 10:00 to 18:00

Tel 0131 552 7171 | www.rbge.org.uk



Royal
Botanic Garden
Edinburgh at

Dawyck

Stobo, near Peebles, Scottish Borders, EH45 9JU

Admission: Adult £7, Concessions £6, under 16s free*.

March 10:00 to 17:00, April to June 10:00 to 18:00

Tel 01721 760254 | www.rbge.org.uk/dawyck



Royal
Botanic Garden
Edinburgh at

Benmore

Dunoon, Argyll, PA23 8QU

Admission: Adult £7, Concessions £6, under 16s free*.

March 10:00 to 17:00, April to June 10:00 to 18:00

Tel 01369 706261 | www.rbge.org.uk/benmore



Royal
Botanic Garden
Edinburgh at

Logan

Port Logan, Dumfries & Galloway, DG9 9ND

Admission: Adult £7, Concessions £6, under 16s free*.

Open from 10:00 to 17:00.

Tel 01776 860231 | www.rbge.org.uk/logan



*Prices include a small donation to the Garden.

Printed by Barr Printers Ltd (CM02/19).

All information correct at time of going to press, for further information
check our website.

The Royal Botanic Garden Edinburgh is a Non Departmental Public Body (NDPB)
sponsored and supported through Grant-in-Aid by the Scottish Government's
Environment and Forestry Directorate (ENFOR). The Royal Botanic Garden
Edinburgh is a Charity registered in Scotland (number SC007983).

