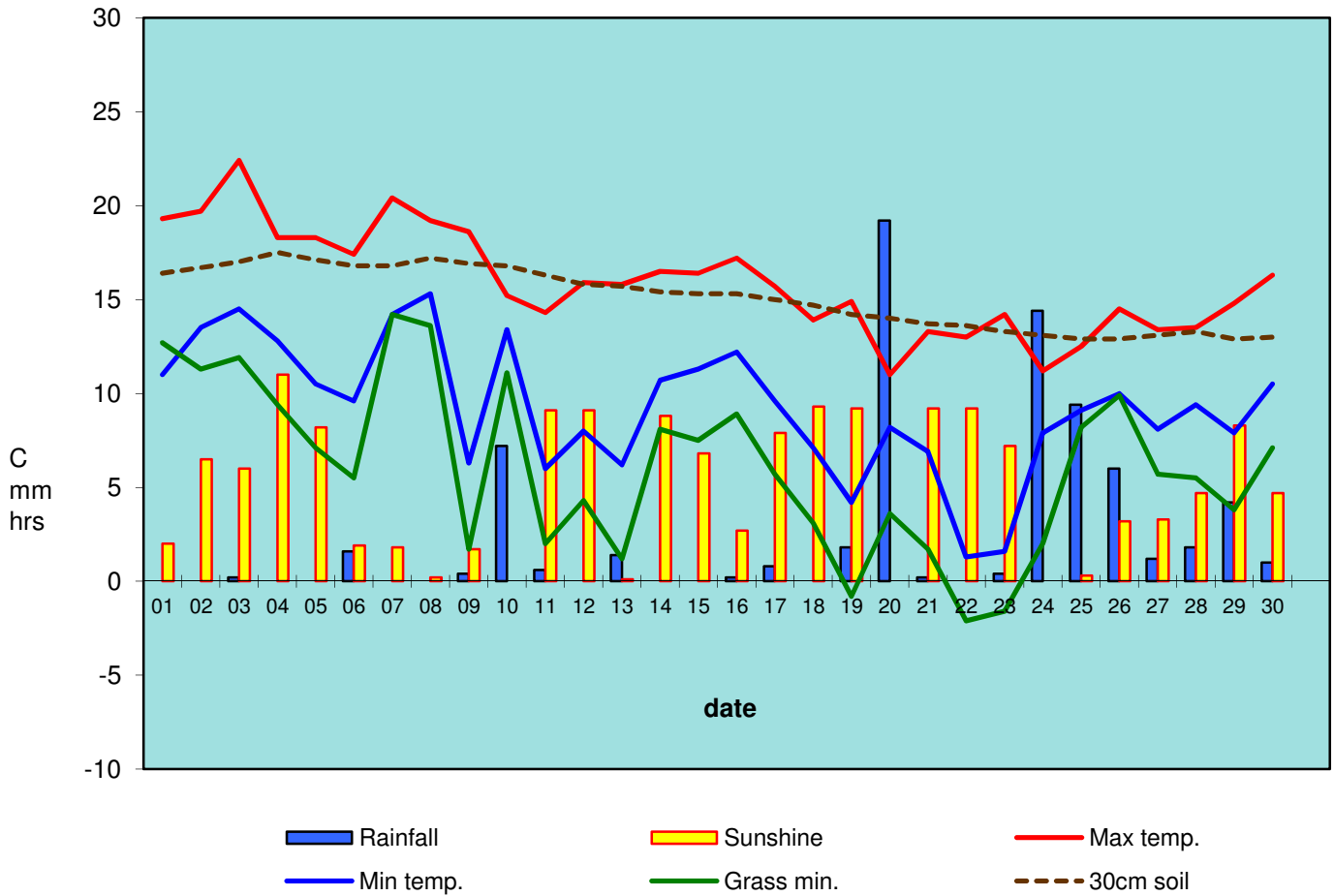


RBGE Weather September 2012



Monthly summary:

	Max temp.	Min temp.	Grass min.	30cm soil	Rain/Snow	Sunshine	
minimum	11.0	1.3	-2.1	12.9	0.0	0.0	
maximum	22.4	15.3	14.2	17.5	19.2	11.0	<u>total rain:</u> <u>72.0mm</u>
mean	15.9	9.2	6.1	15.1	2.4	5.1	<u>total sun:</u> <u>152.4hrs</u>
<i>long term averages</i>							
<i>September</i>	<i>16.45</i>	<i>9.48</i>	<i>5.83</i>	<i>13.58</i>	<i>2.08</i>	<i>4.25</i>	
anomalies*	-0.55	-0.23	0.25	1.51	0.32	0.83	
* red if below, blue if above long term (since 1976) average					115%	120%	

averages over the past 12 months and anomalies from long term (1976-2005) averages

	average	anomalies	
air temp. (°C)	9.79	0.62	
rain (mm per day)	2.44	0.53	127%
sun (hrs per day)	3.66	-0.18	95%