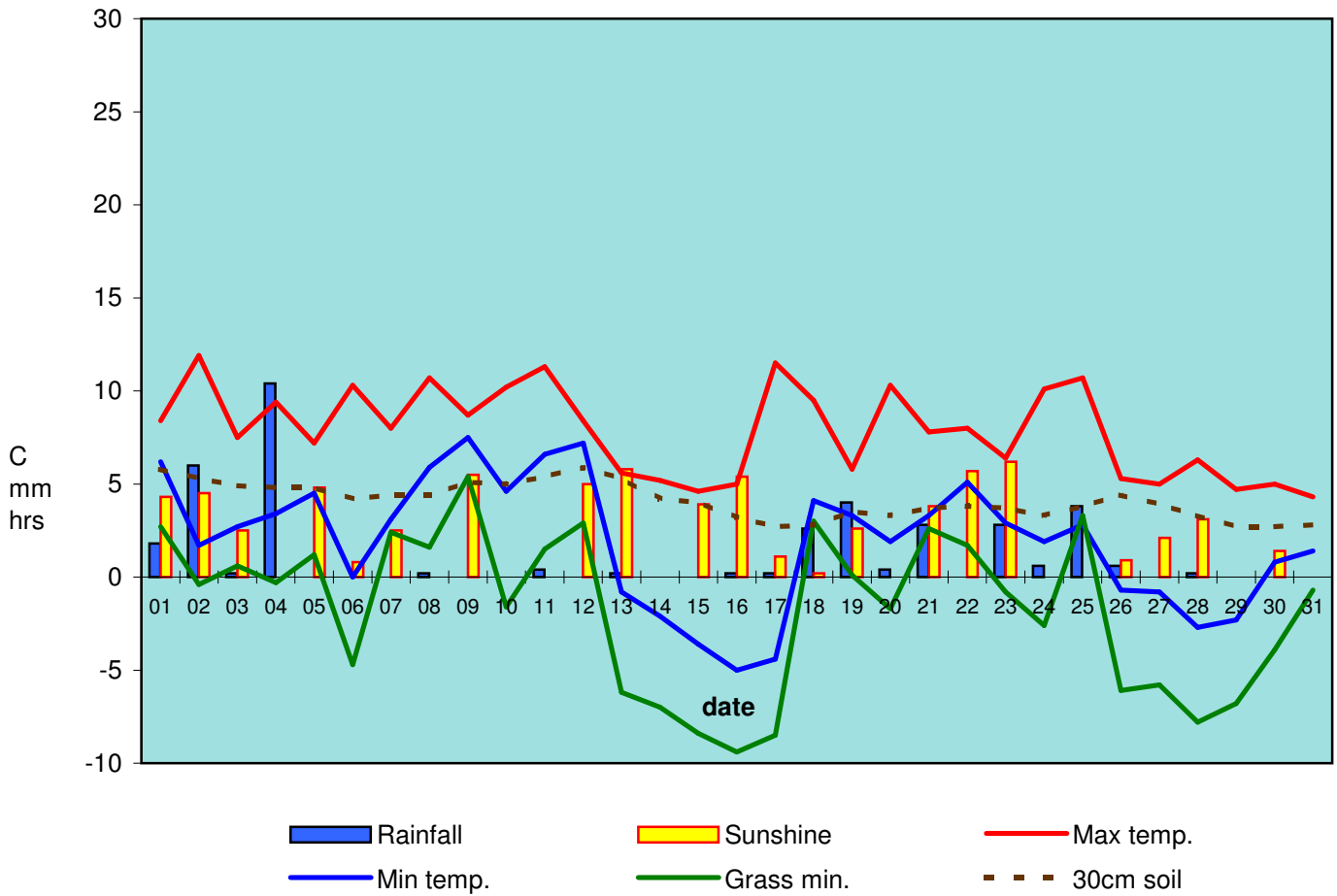


RBGE Weather January 2012



Monthly summary:

	Max temp.	Min temp.	Grass min.	30cm soil	Rain/Snow	Sunshine		
minimum	4.3	-5.0	-9.4	2.7	0.0	0.0		
maximum	11.9	7.5	5.4	5.9	10.4	6.2	<u>total rain:</u>	<u>37.4mm</u>
mean	7.8	1.9	-1.7	4.1	1.2	2.3	<u>total sun:</u>	<u>72.1hrs</u>
<i>long term averages</i>								
January	6.73	1.19	-2.51	3.24	2.13	1.72		
anomalies*	1.11	0.69	0.78	0.86	-0.92	0.61		
* red if below, blue if above long term (since 1976) average					57%	135%		

averages over the past 12 months and anomalies from long term (1976-2005) averages

	average	anomalies	
air temp. (°C)	10.13	0.96	
rain (mm per day)	2.26	0.35	118%
sun (hrs per day)	3.90	0.06	101%