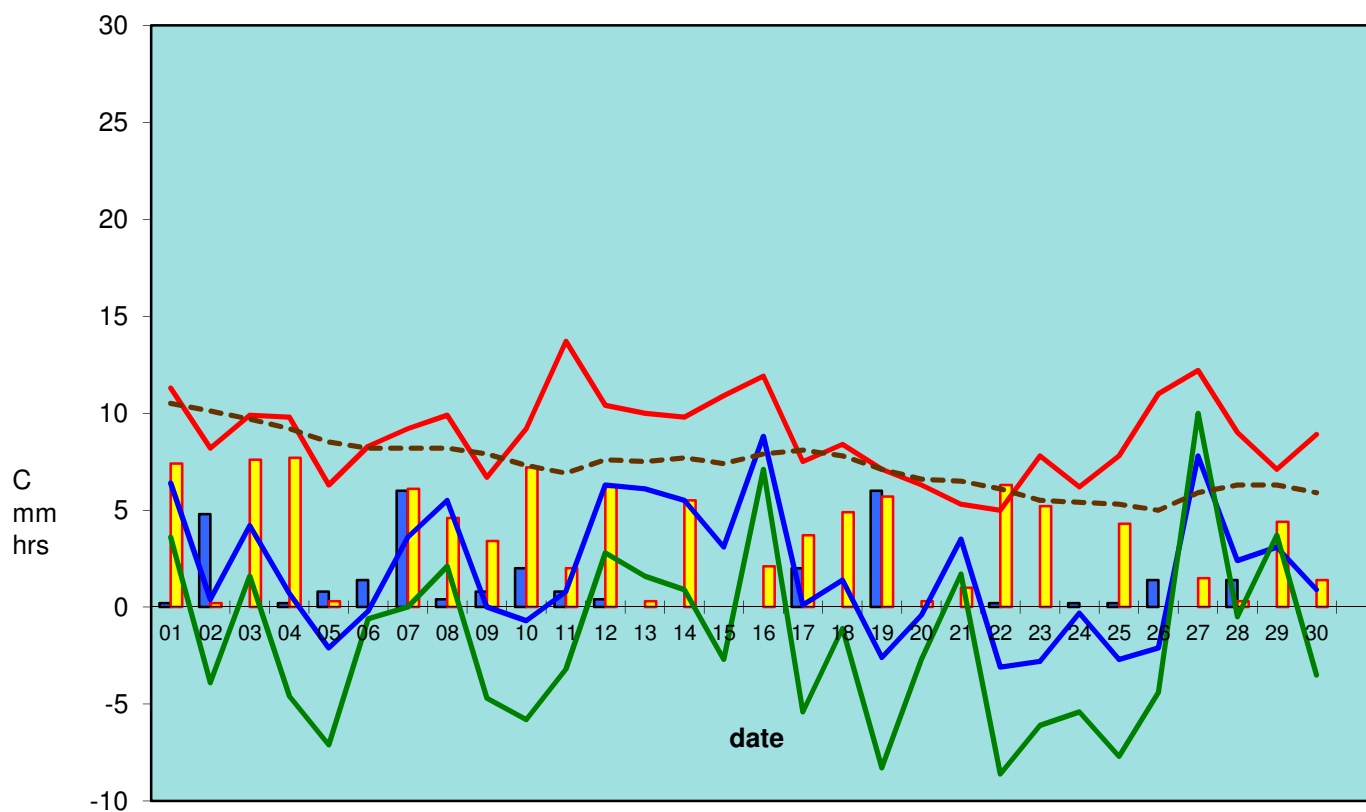


## RBGE Weather November 2013



■ Rainfall   
 ■ Sunshine   
 — Max temp.   
 — Min temp.   
 — Grass min.   
 - - - 30cm soil

### Monthly summary:

	Max temp.	Min temp.	Grass min.	30cm soil	Rain/Snow	Sunshine		
minimum	5.0	-3.1	-8.6	5.0	0.0	0.0		
maximum	13.7	8.8	10.0	10.5	6.0	7.7	<u>total rain:</u>	<u>29.2mm</u>
mean	8.8	1.8	-1.7	7.4	1.0	3.3	<u>total sun:</u>	<u>99.6hrs</u>

### long term averages

November	9.67	3.64	-0.13	6.72	2.08	2.43		
----------	------	------	-------	------	------	------	--	--

anomalies*	-0.83	-1.85	-1.58	0.63	-1.11	0.89		
------------	-------	-------	-------	------	-------	------	--	--

\* red if below, blue if above long term (since 1976) average      47%      137%

### averages over the past 12 months and anomalies from long term (1976-2005) averages

	average	anomalies	
air temp. (°C)	9.19	0.02	
rain (mm per day)	1.60	-0.32	83%
sun (hrs per day)	3.99	0.15	104%