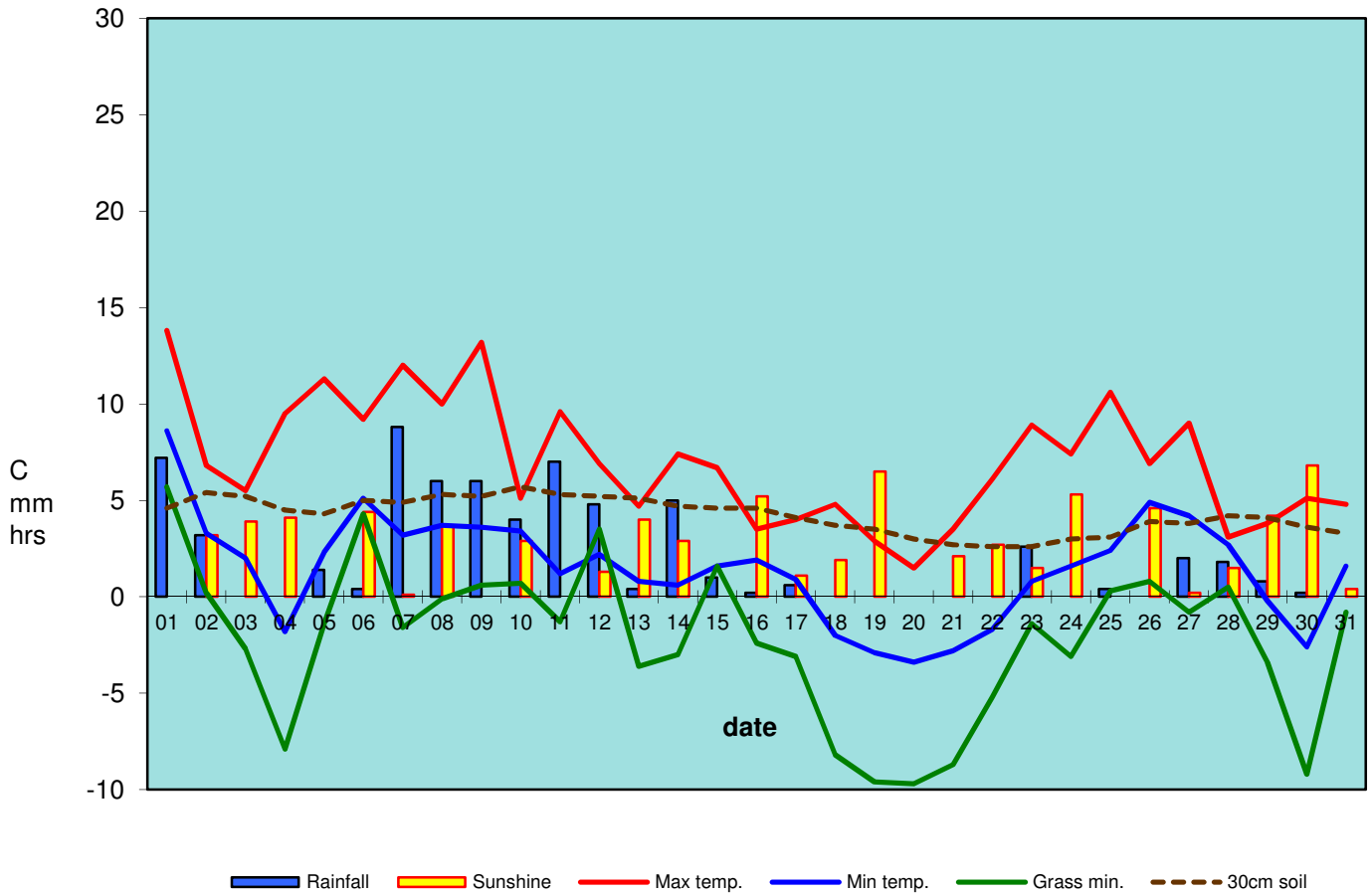


RBGE Weather January 2015



Monthly summary:

	Max temp.	Min temp.	Grass min.	30cm soil	Rain/Snow	Sunshine		
minimum	1.5	-3.4	-9.7	2.6	0.0	0.0		
maximum	13.8	8.6	5.7	5.7	8.8	6.8	<u>total rain:</u>	<u>63.8mm</u>
mean	7.0	1.5	-2.2	4.2	2.1	2.4	<u>total sun:</u>	<u>74.5hrs</u>
<i>long term averages</i>								
January	6.79	1.28	-2.34	3.36	2.09	1.73		
anomalies*	0.23	0.18	0.11	0.86	-0.03	0.67		
* red if below, blue if above long term (since 1976) average					98%	139%		

averages over the past 12 months and anomalies from long term (1981-2010) averages

	average	anomalies	
air temp. (°C)	10.28	0.99	
rain (mm per day)	1.93	-0.04	98%
sun (hrs per day)	3.96	0.05	101%