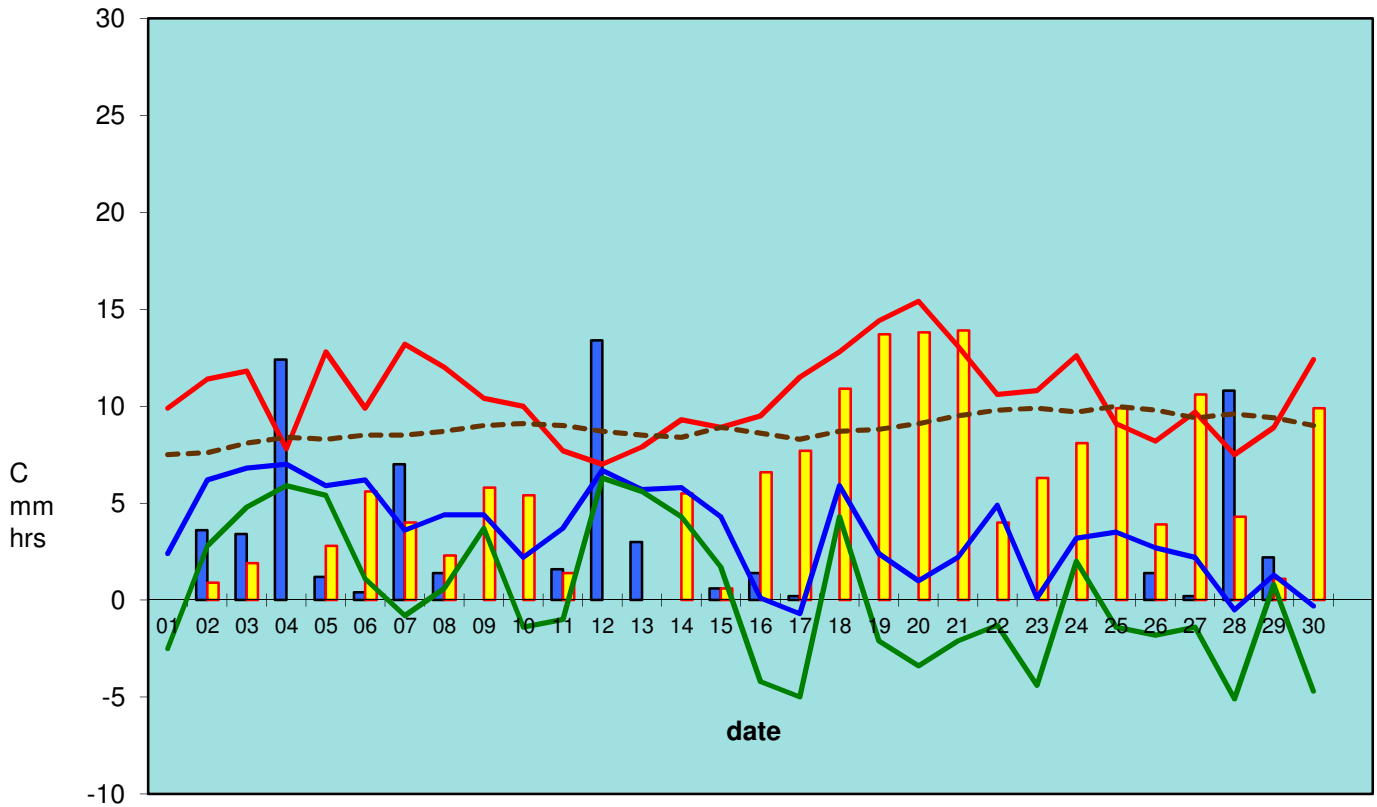


RBGE Weather April 2016



■ Rainfall
 ■ Sunshine
 — Max temp.
 — Min temp.
 — Grass min.
 - - - 30cm soil

Monthly summary:

	Max temp.	Min temp.	Grass min.	30cm soil	Rain/Snow	Sunshine	
minimum	7.0	-0.7	-5.1	7.5	0.0	0.0	
maximum	15.4	7.0	6.3	10.0	13.4	13.9	<u>total rain:</u> 64.2mm
mean	10.6	3.4	0.2	8.9	2.1	5.4	<u>total sun:</u> 160.9hrs

long term averages

<i>April</i>	<i>11.65</i>	<i>4.31</i>	<i>0.63</i>	<i>8.35</i>	<i>1.38</i>	<i>4.94</i>	
--------------	--------------	-------------	-------------	-------------	-------------	-------------	--

anomalies*	-1.10	-0.87	-0.40	0.54	0.76	0.43	
------------	-------	-------	-------	------	------	------	--

* red if below, blue if above long term (since 1976) average 155% 109% *grimness: 1.4*

averages over the past 12 months and anomalies from long term (1981-2010) averages

	average	anomalies	
air temp. (°C)	9.46	0.17	
rain (mm per day)	2.40	0.43	122%
sun (hrs per day)	3.92	0.01	100%