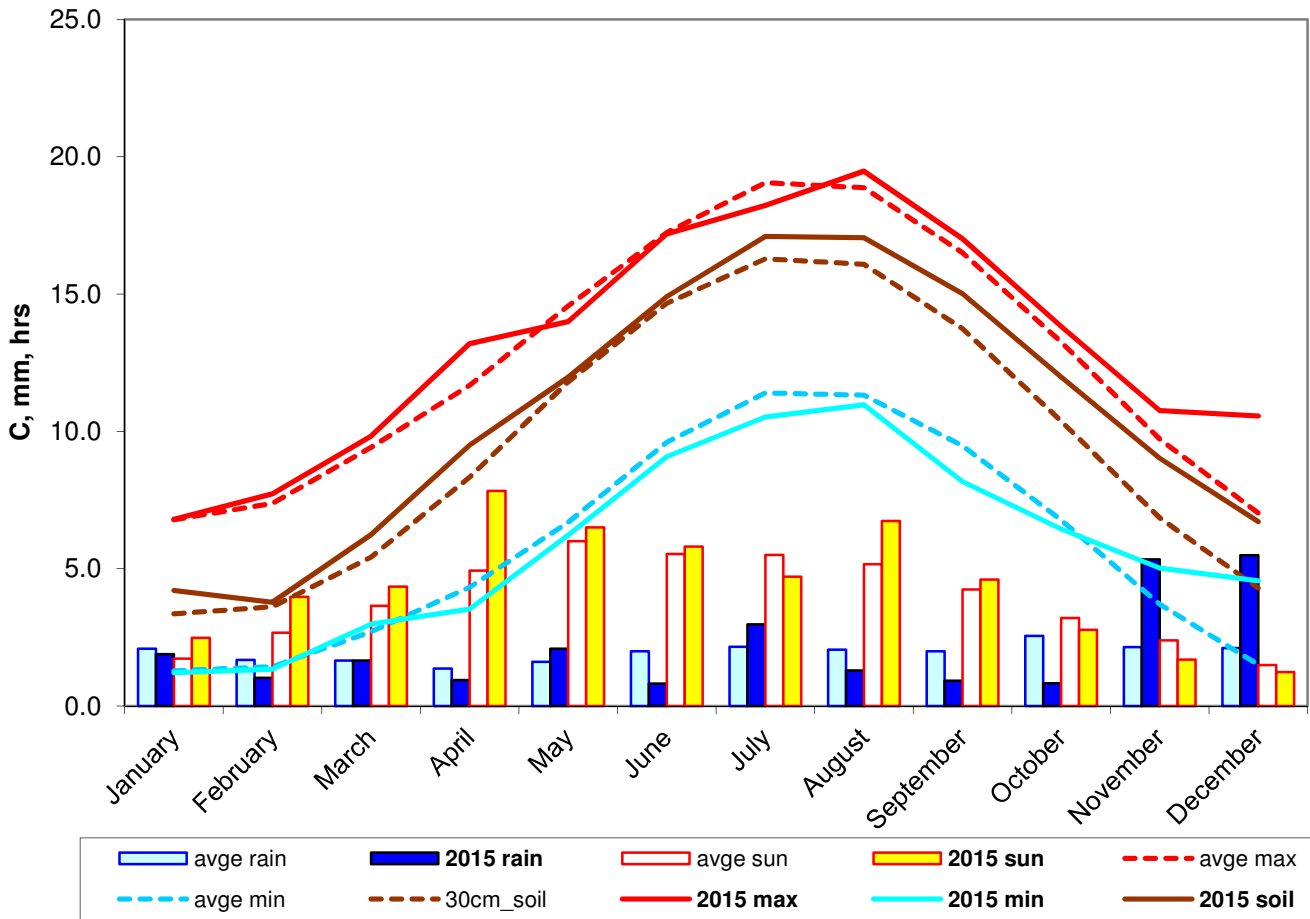


2015 weather in perspective



30 year averages
(1981-2010)

2015 anomaly

max	12.71	13.29	0.58
min	5.89	5.86	-0.03
soil	9.47	10.63	1.16
rain	719.79	773.60	107%
sun	1426.71	1620.90	114%

statistics

warmest day	30-Jun-15	24.8C
coldest day	03-Feb-15	-4.1C
wettest day	14-Nov-15	27.4mm
sunniest day	10-Jun-15	15.8hrs

CONCLUSIONS: A very mixed year with a bright spring and a mild and wet end.

There were 27 days with air frost, and the same number for days above 20C.