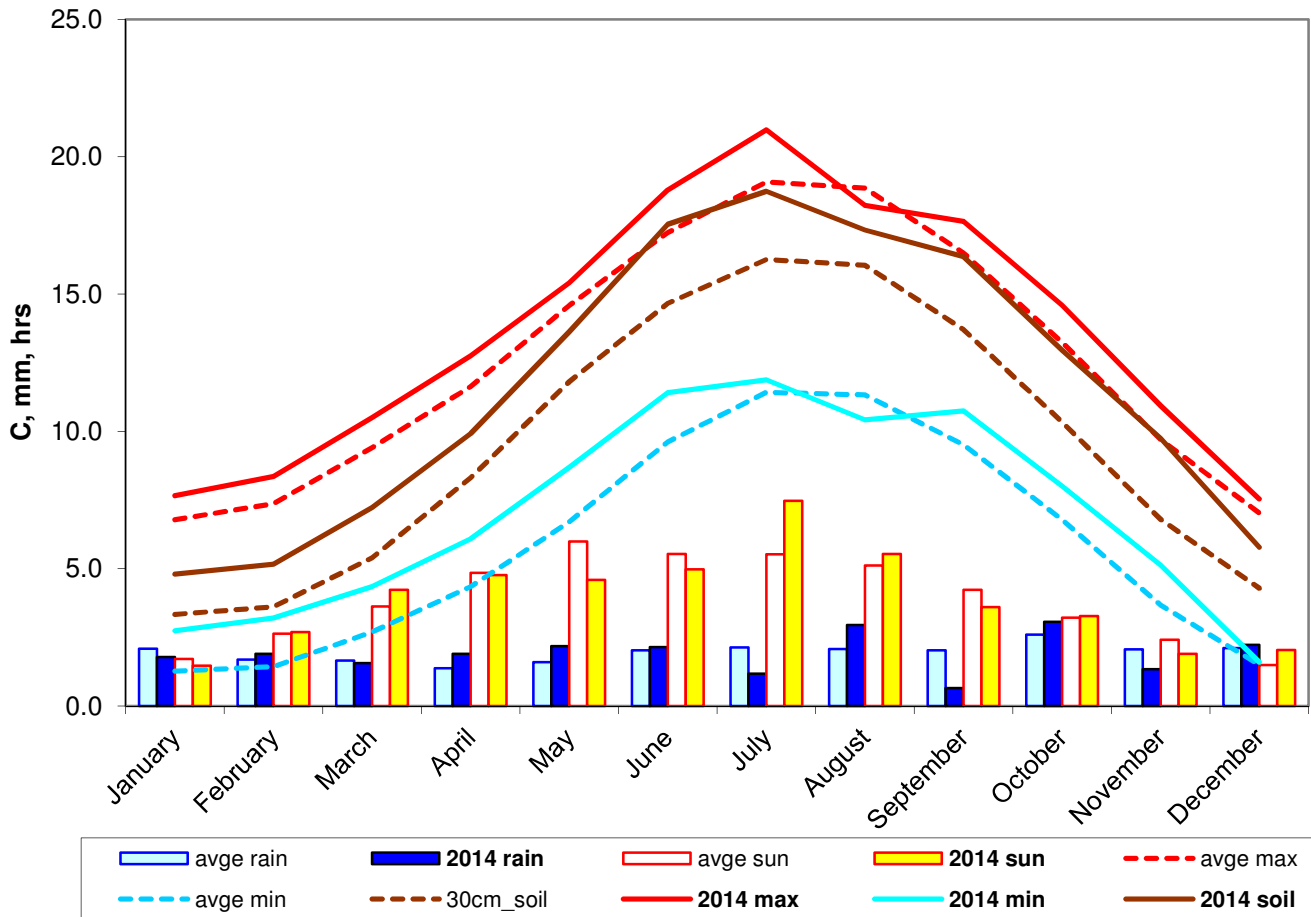


2014 weather in perspective



30 year averages
(1981-2010)

2014 anomaly

max	12.71	13.65	0.94
min	5.89	7.03	1.14
soil	9.47	11.64	2.17
rain	719.79	696.00	97%
sun	1426.71	1426.20	100%

statistics

warmest day	18-Jun-14	26.2C
coldest day	24-Mar-14	-3.6C
wettest day	03-Oct-14	43.2mm
sunniest day	22-Jul-14	15.5hrs

CONCLUSIONS: nice warm summer, mild spring, warm autumn; but not quite the warmest year ever. There were only 16 days with air frost, a record for Inverleith. The average is 46.