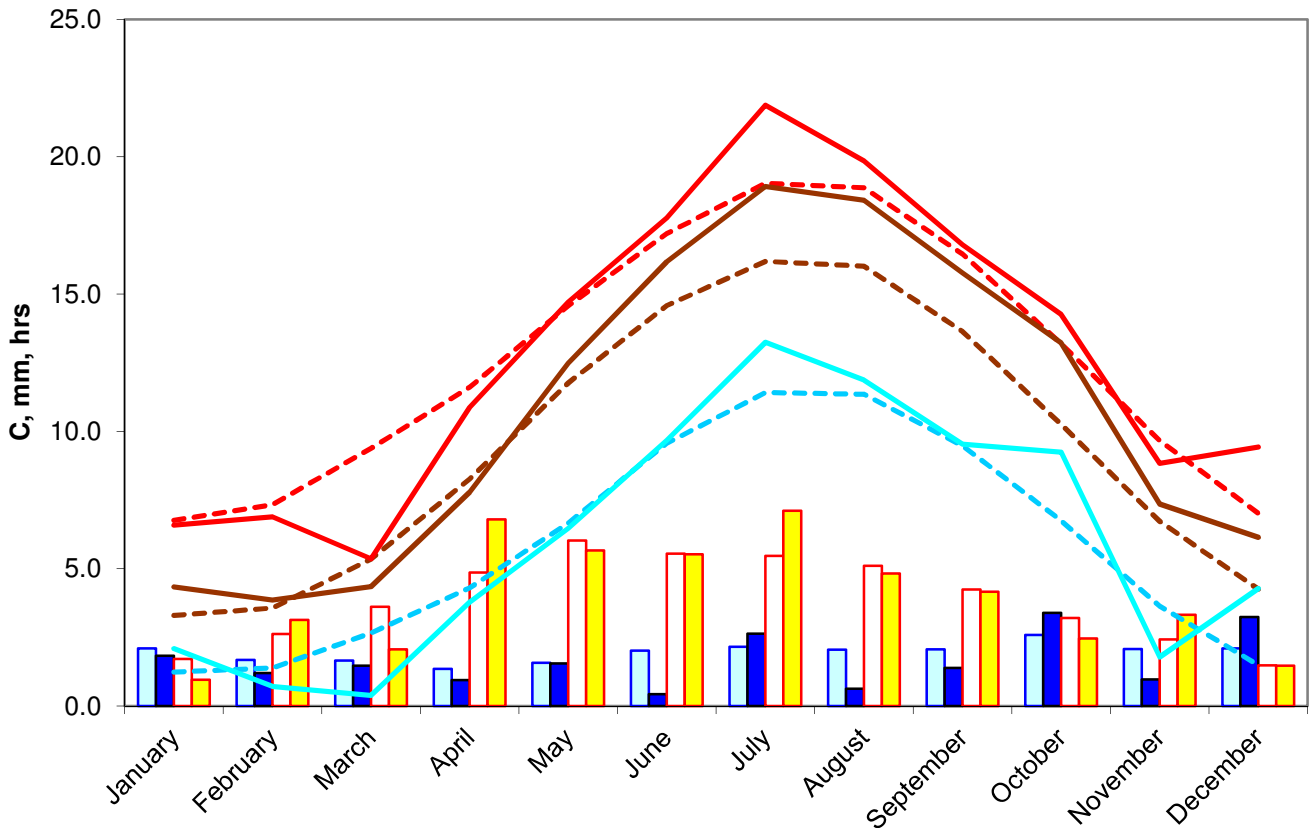


2013 weather in perspective



30 year averages
(1981-2010)

2013 anomaly

	30 year averages (1981-2010)	2013	anomaly
max	12.71	12.82	0.10
min	5.89	6.11	0.22
soil	9.47	10.77	1.30
rain	719.79	585.60	81%
sun	1426.71	1465.00	103%

statistics

warmest day	12-Jul-13	28.4C
coldest day	12-Mar-13	-4.7C
wettest day	16-Oct-13	24.0mm
sunniest day	25-May-13	16.2hrs

CONCLUSIONS: nice warm summer, cold early spring, warm December