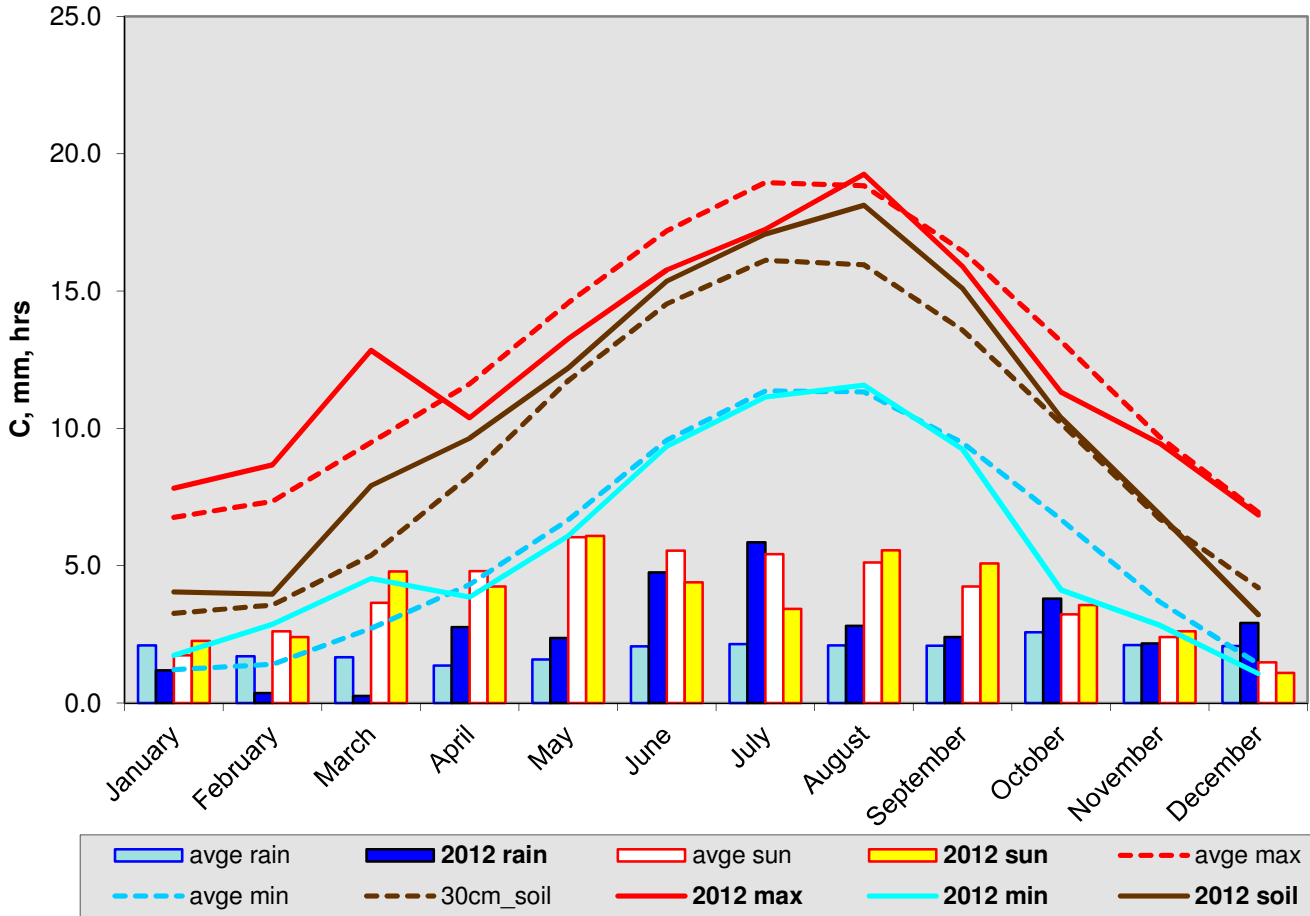


2012 weather in perspective



30 year averages
(1976-2005)

2012 anomaly

max	12.55	12.43	-0.12
min	5.81	5.75	-0.06
soil	9.30	10.35	1.05
rain	698.55	959.20	137%
sun	1401.79	1377.00	98%

statistics

warmest day	14-Aug-12	22.7C
coldest day	02-Feb-12	-5.6C
wettest day	11-Oct-12	42.8mm
sunniest day	26-May-12	15.5hrs

CONCLUSIONS: *a crazy year, weatherwise*