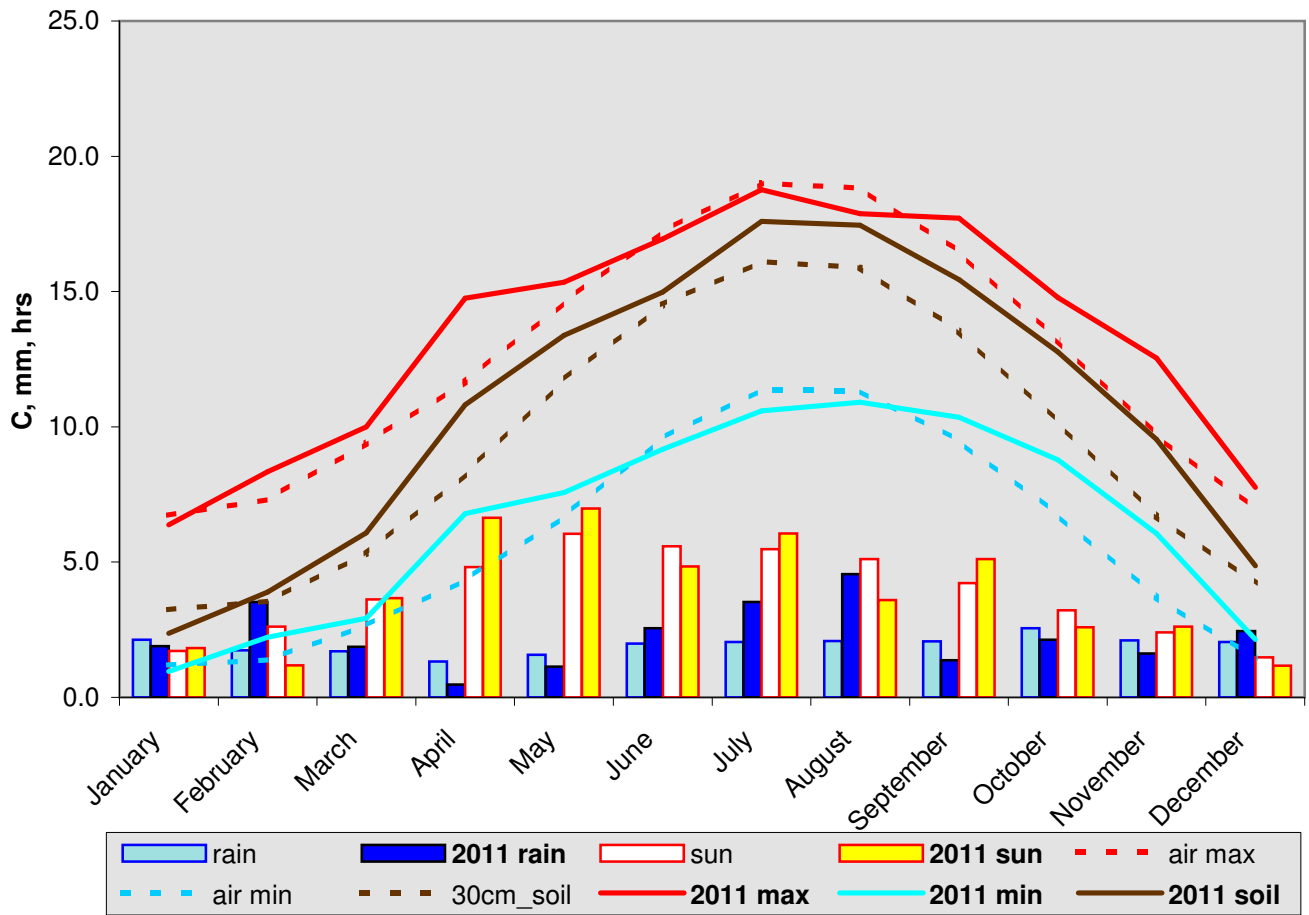


2011 weather in perspective



30 year averages
(1976-2005)

2011 anomaly

max	12.55	13.45	0.90
min	5.81	6.59	0.78
soil	9.30	10.81	1.51
rain	698.55	843.05	121%
sun	1401.79	1405.40	100%

statistics

warmest day	30-Sep-11	24.9C
coldest day	7/8-Jan-11	-6.4C
wettest day	10-Aug-11	47.2mm
sunniest day	3-Jun-11	15.6hrs

CONCLUSIONS: *warm soil, cool air in summer, warm and bright spring and autumn*