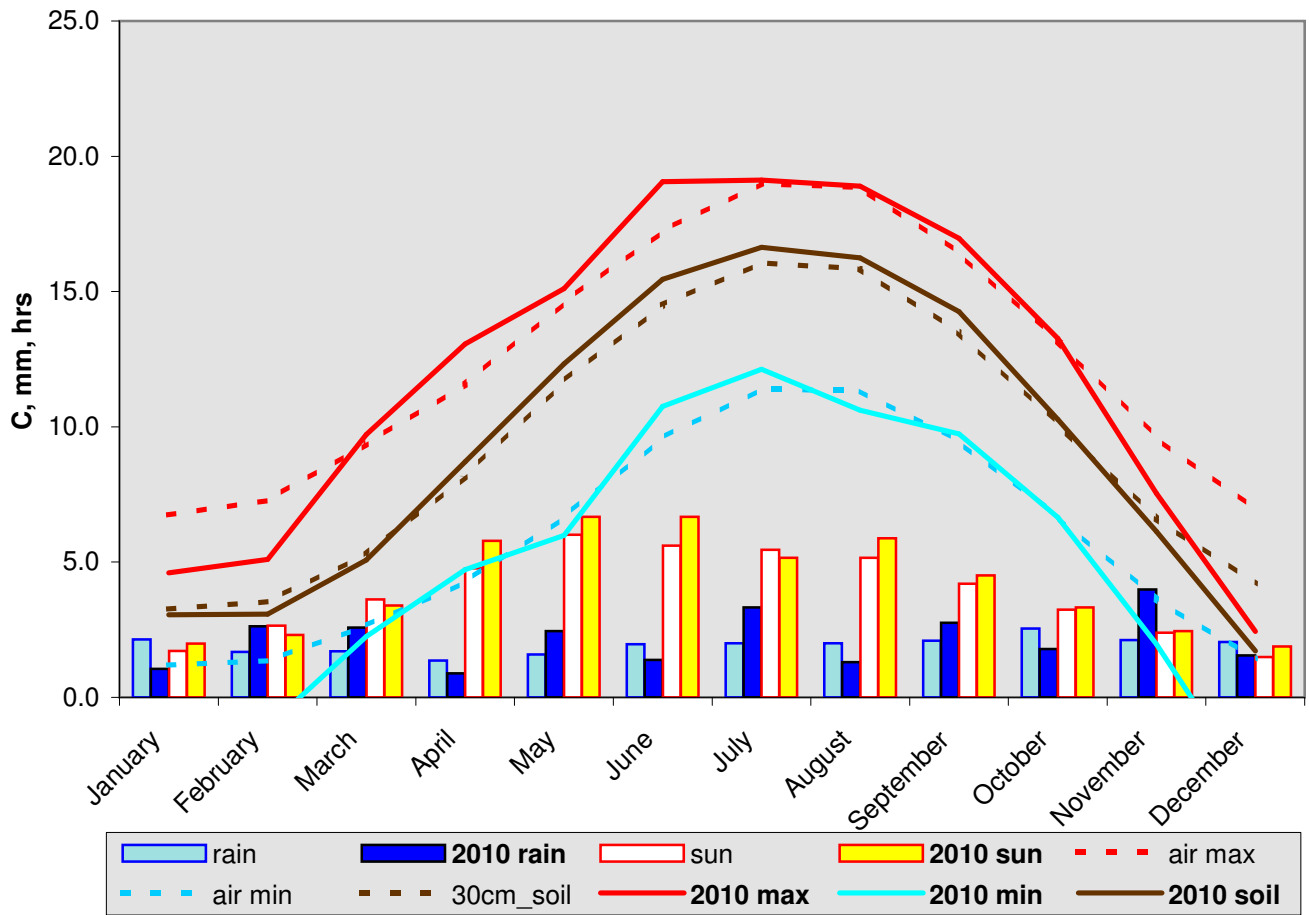


2010 weather in perspective



30 year averages
(1976-2005)

2010 anomaly

max	12.55	12.09	-0.45
min	5.81	4.99	-0.81
soil	9.30	9.44	0.14
rain	698.07	793.20	114%
sun	1400.83	1508.60	108%

statistics

warmest day	22-May-10	25.5C
coldest day	3-Dec-10	-10.1
wettest day	30-Mar-10	26.1
sunniest day	22-Jun-10	15hrs

CONCLUSIONS: *cold beginning; warmish, bright middle; cold and snowy end*