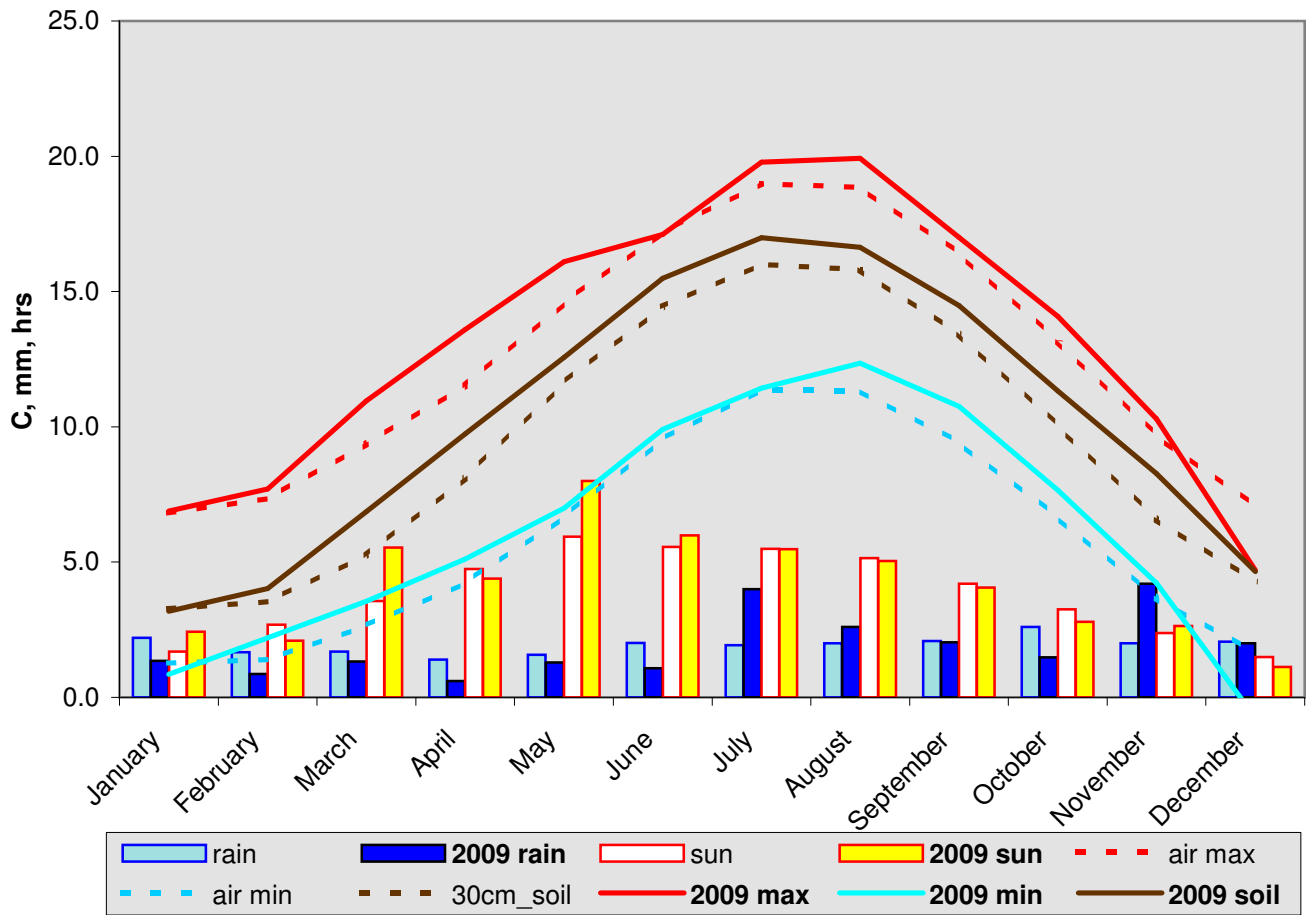


2009 weather in perspective



30 year averages
(1976-2005)

2009 anomaly

max	12.54	13.20	0.66
min	5.80	6.20	0.40
soil	9.29	10.40	1.10
rain	698.97	699.42	100%
sun	1400.56	1509.98	108%

statistics

warmest day	2-Jul-09	29.9C
coldest day	24-Dec-09	-7.1
wettest day	1-Nov-09	29.0mm
sunniest day	1-Jun-09	15.2hrs

CONCLUSIONS: *dry spring, wet summer, average means (apart from soil +1.1C), more continental extremes*