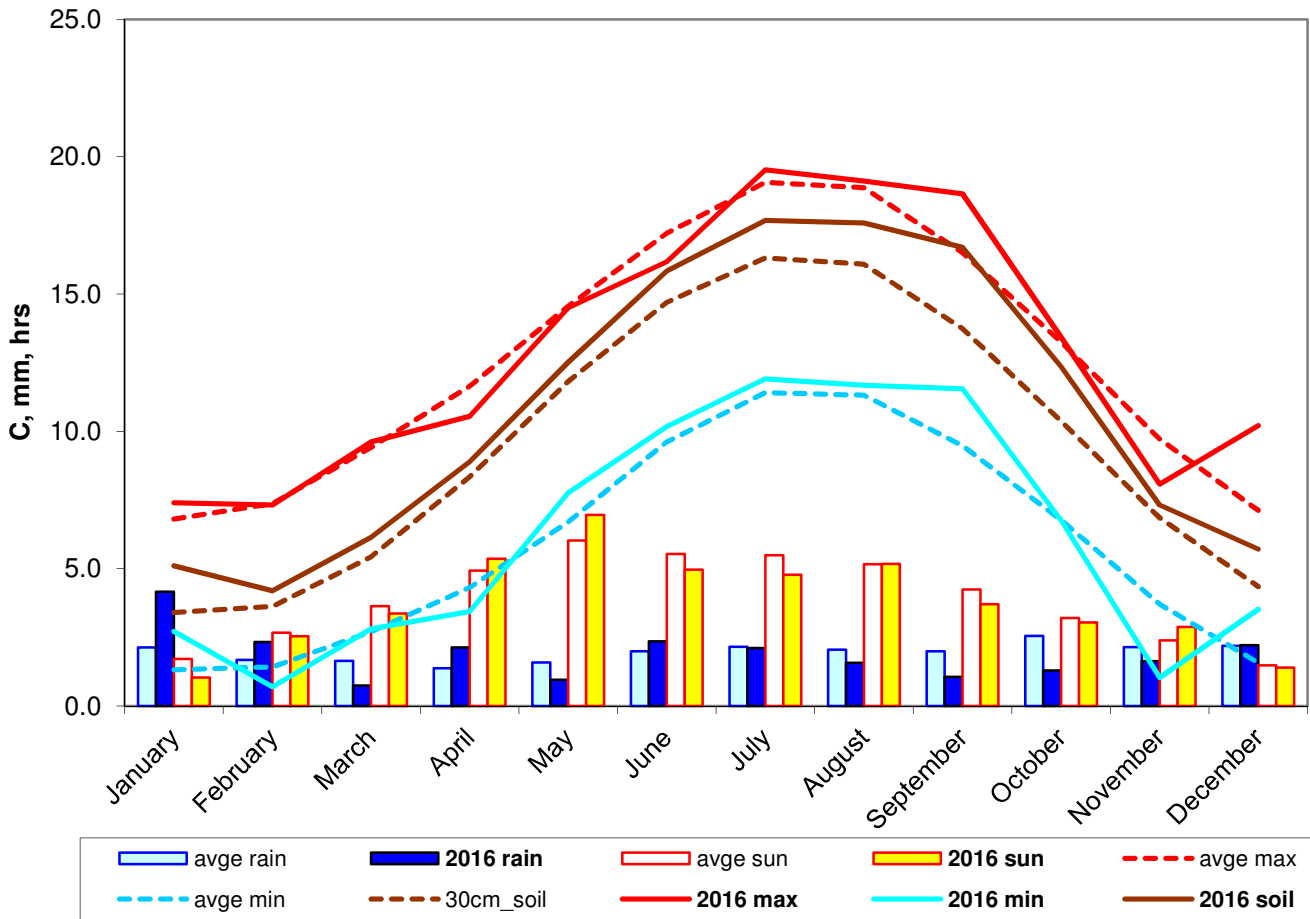


2016 weather in perspective



30 year averages
(1981-2010)

2016 anomaly

max	12.71	12.91	0.20
min	5.89	6.20	0.31
soil	9.47	10.86	1.39
rain	719.79	681.40	95%
sun	1426.71	1390.10	97%

statistics

warmest day	18-Jul-16	24.8C
coldest day	25-Nov-16	-4.6C
wettest day	24-Jun-16	20.2mm
sunniest day	31-May-16	15.5hrs

CONCLUSIONS: A very mixed year with a cold November and a warm end.

There were 44 days with air frost, 107 with grass frost and 24 days above 20C.