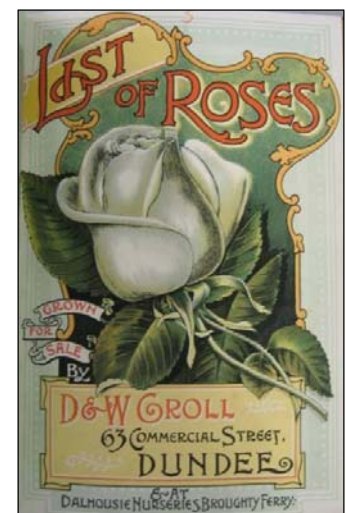




Royal
Botanic Garden
Edinburgh

UK & RoI Nurseries, Nurserymen and Seed Catalogues

Royal Botanic Garden Edinburgh



Lynda Marquis 2010

UK (inc. CHANNEL ISLANDS) & RoI NURSERIES, NURSERYMEN AND SEED CATALOGUES

The following is a list of nursery & seed catalogues held by the library of The Edinburgh Royal Botanic Garden. Unless otherwise indicated, the majority of the catalogues, which are arranged alphabetically by seedsman or nursery, are stored in box-files and are located in the bookstack.

Book collection = located in the main library.

Bound in - *Nurserymen's Catalogues Britain (1)* = located in the bookstack at the beginning of the British section, but bound with other catalogues. The number within the brackets refers to the bound volume number.

Bound in - *Cocker and Sons, Seed & Plant Catalogues 1890 – 1899* = bound catalogues relating to a specific nursery are shelved, alphabetically, beside the box files in the bookstack.

Bound – *Periodical collection* = located in the main periodical/journal collection, arranged alphabetically by title.

Reprint collection = located in the bookstack.



Contents

CHANNEL ISLANDS	6
ENGLAND.....	8
NORTHERN IRELAND.....	49
REPUBLIC OF IRELAND	51
SCOTLAND.....	54
QUICK GUIDE TO UK AND RoI NURSERIES	62

The Quick Guide provides a guide to the span of years covered by the individual nurseries rather than the exact dates as indicated in the main index. Undated catalogues are indicated by the abbreviation - n.d.

Most catalogues offer a wide range of flowers, plants, trees, etc., which comes under the heading of *General Catalogue*. A quick scan down the other columns will provide an 'at a glance' indication of focused content, e.g. *Ferns* or *Aquatic plants*.



Bunyard's Allington Pippin

Illustrations –

Font cover (left to right)

Hogg & Robertson. (RoI) 1900

Frank Cant & Co. (England) 1901 -1902

D. & W. Croll. (Scotland) c.1900

Page 1

W. & J. Birkenhead. Catalogue of ferns and selaginellas, 1880

Page 3

George Bunyard & Co. Descriptive catalogue of fruit, trees and roses. 1906 -1907

Page 4

R. Gill & Son. Tibetan collector, 1930.

Page 7

Carter's seed catalogue, 1890. Facing page 70.

Page 23

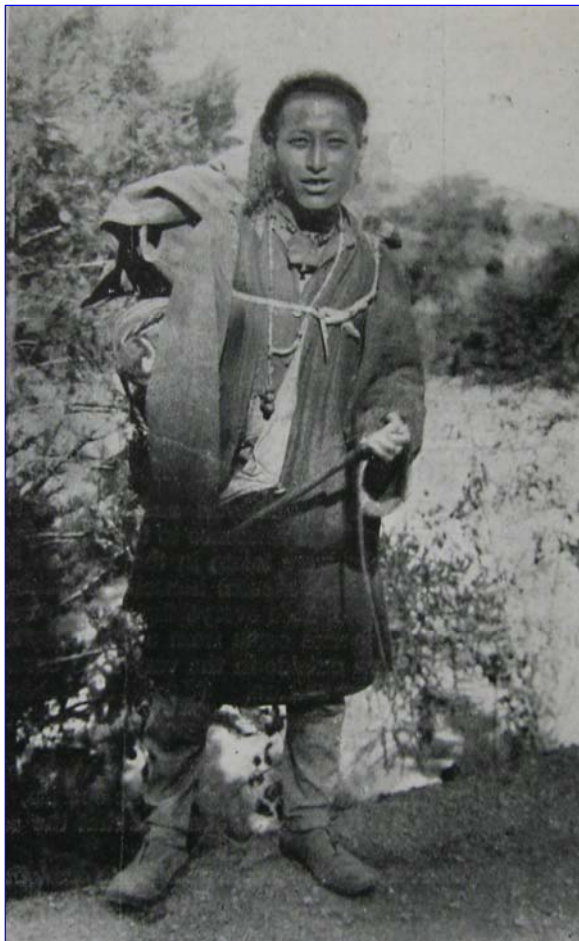
left to right. William Bull, 1888; Dicksons, 1895; H. Merryweather, catalogue of fruit trees, shrubs, roses in pots, rose trees, etc. 1900 – 1901, page A; H. Merryweather & Sons, Ltd., 1908/09.

Page 53

D,W. Thomson. Nursery catalogue. n.d.

Back cover

H.J. Jones. 1901 catalogue. Facing page 146.



*Tibetan
rhododendron
collector. 1930*

CHANNEL ISLANDS

GUERNSEY

MAUGER, W. & Sons.

Bulb Growers, Guernsey.

- Wholesale bulb catalogue 1938

SMITH, C. & Son

Caledonia Nurseries, Guernsey.

Bound in – *Nurserymen's catalogues. Britain (14)*

- List of bulbous, tuberous rooted and other plants 1902
- Collection of hardy and half hardy plants n.d.

ENGLAND



Carter's seed catalogue - 1890

ENGLAND

ALDENHAM HOUSE GARDENS

Elstree.

- List of surplus plants October, 1925; December, 1926; September, 1927

ALLINGTON NURSERIES, KENT *see* BUNYARD, George & Co.

ALLWOOD BROTHERS

Haywards Heath, Sussex.

- Carnations & Dianthus 1939
- Newest commercial perpetual flowering carnations n.d.
- Carnation, pink and dianthus seed n.d.

ANDERSON, Rev. J. Farnworth

Glenn Hall, Leicester.

- Choice alpine & perennial seeds n.d.

Carham Vicarage, Coldstream.

Bound in – *Nurserymen's catalogues. Britain (1)*

- Alpine and rock plants, etc n.d.

AUCTION ROOM SALES *see* Protheroe & Morris

B

BACKHOUSE, James & Son Ltd.

The Nurseries, York.

- Catalogue of hymenophyllums and trichomanes 1851; 1871
- Alpine plants, hardy perennials & florists' flowers 1897;1891
- Stove & greenhouse plants, ferns, palms, carnations, clematis, pot roses, bedding plants, etc. etc. 1905
- New and interesting plants, alpine shrubs, carnations, etc. being a supplement to our herbaceous catalogue of 1904..... 1905
- Gardening under cover n.d.
- Alpine and herbaceous plants..... 1907;1909;1911;1913;1923
- Alpine and herbaceous plants, rock shrubs, ferns, aquatics, etc. (c.1913) n.d.
- Bulb list1907
- Seeds, trees, plants, bulbs, etc. n.d.; 1909
- Bulbs and flower roots 1910; 1912 – 1916
- Select vegetable and flower seeds, etc. 1907
- Surety vegetable and flower seeds 1908; 1911 – 1915

- Soft-wooded and bedding plants 1891
 - Trees & shrubs, coniferae, etc Aut./Spring 1906/07; 1910/11; 1911/12
 - Trees & shrubs, fruit trees, coniferae, roses, hardy climbers, forest trees, etc.
..... 1912;1914 – 1916
 - Catalogue of special offer of ornamental and forest trees, evergreen shrubs and
conifers (York Nursery) 1910
 - Fruitful fruit trees 1909
 - York roses 1910 – 1912
- Bound in –***Backhouse & Son, Alpine Plants, etc., 1896 – 1902***
- Alpine and herbaceous plants; new or rare plants, (suppl.) 1886
 - Alpine plants, hardy perennials, & florists’ flowers* 1895; 1897 - 99; 1902
- Bound in – ***Nurserymen’s Catalogues. Britain (2)***
- Flower roots, spring flowering and forcing plants, carnations, strawberries, etc.
..... 1897
 - New and interesting plants, nymphaeas, etc. 1901
- (Nursery branches at:- 4, Spurriergate, York; 12 Duncan Street, Leeds; Cattal Station, Yorkshire. * includes illustrations of rockworks)

“BANK HOUSE”- see Protheroe & Morris

BARNHAM NURSERIES, Ltd.

Barnham, Sussex.

- Trade catalogue of fruit trees, roses & general nursery stock .. season 1940 – 41

BARR & Sons

11, 12 and 13 King Street, Covent Garden, London.

- Various plant sale and clearance leaflets covering years..... 1894 – 1914
- Barr’s ‘gold medal’ daffodils 1904 – 1905; 1907 – 1915
- Barr’s spring bulb catalogue1921 - 1922; 1930
- Barr’s spring bulb catalogue of bulbs, tubers, etc..... Spring 1921
- Barr’s seed guide..... 1921

Bound in –***Barr & Sons- Daffodils 1888 – 1902***

- Descriptive catalogue of hardy daffodils. (Includes hardy English daffodils,
narcissus and other plants) 1888 – 1890; 1893; 1895; 1897 – 1902

Bound in – ***Barr & Sons – Bulbs & Tubers 1887 - 1902***

- Descriptive Autumn catalogue of bulbs & plants for all seasons 1887
- Descriptive catalogue of hyacinths, etc.(bulbs & tubers).....1889; 1892; 1893; 1895
- Barr’s general bulb catalogueAutumn 1897 – Autumn 1902
- Barr’s Spring catalogue of bulbs & tubers.....Spring 1900 – Spring 1902

Bound in – ***Barr & Sons – Bulbs & Tubers 1903 – 1910***

- General bulb catalogue..... 1903
- Autumn bulb catalogueAutumn 1905 - 1910
- Bulbs and tubersSpring catalogue 1908 - 1910

Bound in – ***Barr & Sons – Bulbs & Tubers 1911 – 1915***

- Bulbs and tubers Spring 1911 – 1915
- Autumn bulb catalogue Autumn 1911 - 1915

Bound in – ***Barr & Sons – Seed & Plant Catalogues, 1889 – 1903***

- Barr’s descriptive catalogue of seeds..... 1889; 1893
- Barr’s descriptive catalogue of popular vegetable & flower seeds 1893; 1896
- Barr’s descriptive catalogue of choice seeds for flower and kitchen garden 1895; 1896
- Descriptive catalogue of the best hardy herbaceous perennials 1893
- Barr’s hardy herbaceous perennials and alpines 1895 – 1898; 1900 – 1903
- Barr’s large families of hardy perennials 1896

Bound in – ***Barr & Sons – Seed Guide, 1897 – 1903***

- Seed guide (Includes vegetable and flower seeds, garden requisites and gardening books) 1897 - 1903

Bound in – ***Barr & Sons – Seed Guide, 1904 – 1910***

- Seed guide (Includes vegetable and flower seeds, garden requisites and gardening books) 1904 - 1910

Bound in – ***Barr & Sons – Seed Guide, 1911 – 1916***

- Seed guide (Includes vegetable and flower seeds, garden requisites and gardening books) 1911 - 1916

Bound in – ***Barr & Sons – Hardy perennials 1906 – 1915***

- Hardy perennials, alpines, aquatics, etc. 1906 – 1915

Book collection - Contained in - Burbridge, Frederick. William., & Barr, Peter., Ye narcissus or daffodil flower, and hys roots with historie and culture, etc. etc., with a compleat list of all the kindes grown in Englishe gardens. Embellished with manie woodcuts. London: 1884 (UAVS\Narcissus)

- Barr’s English daffodils 1893
- Descriptive catalogue of hyacinthe, etc. (general catalogue) 1893

(Nursery branches at Ditton Hill, Surbiton, Surrey; Formerly Barr and Sugden)

BARR & SUGDEN,

Seed Merchants and Florists, 12, King Street, Covent Garden, London.

W.C.

Bound in – ***Barr & Sugden – Spring Seed Catalogues, etc. 1862 – 81***

- Spring seed catalogue and guide to the flower and kitchen garden..... 1862; 1877; 1881
- Guide to the kitchen garden; descriptive list of select vegetable seeds, gladioli roots, etc.(includes agricultural seeds) 1863
- Illustrated guide to the flower garden and descriptive priced list of choice seeds, canna roots, etc. 1863

(Continued trading as Barr and Sons)

BARRON, William, & Son.

Elvaston Nurseries, Borrowash, Near Derby.

- Catalogue of coniferae, ornamental plants, forest trees, etc. n.d.

- Catalogue of coniferae, hardy ornamental trees & shrubs, hardy evergreens, forest trees, etc. (circa 1900) n.d.
 - Catalogue of fruit trees, roses, herbaceous & alpine plants, greenhouse & bedding plants, etc..... n.d.
- Bound in – *Nurserymen’s Catalogues. Britain (4)*
- Descriptive catalogue of coniferae and other ornamental plants 1882/83
 - Catalogue of forest trees, cover plants, etc. 1889/90; 1894/95; 1895/96; 1896/97;1897/98
- (Contains information on W. Barron & Son’s tree transplanting machines invented in 1831.)

BEES

Mill Street, Liverpool.

Bound in – *Bees – Seed Catalogues – 1905 – 1909; 1910 – 1912*; 1913 - 1918*

Various catalogues covering the following

- Bulbous and tuberous-rooted plants
- General tree and shrub catalogue
- Rose catalogues
- Catalogue of chrysanthemums, dahlias, carnations, bedding plants, etc.
- Flower & vegetable seeds
- Forest trees
- Fruit trees

*This volume contains an article titled ‘The Romance of Plant Collecting on the Snow-Capped Alps of China’ which includes some photographs of George Forrest in China during his plant hunting days. Kingdon Ward and some of his plant introductions are also mentioned.

BENTON, H. & Co.

Monument-lane Nursery, Edgebaston, Birmingham. (filed under Warner & Warner)

- ‘Two of the most splendid novelties of the season; Penstemon gigantean elegans & Pansy midnight 1845

BIRKENHEAD, W. & J.

17 & 19, Washway Road, Sale, near Manchester

- Catalogue of ferns and selaginellas..... 1880

Bound in – *Nurserymen’s catalogues. Britain (1)*

- Catalogue of ferns and selaginellas.....Sept. 1896 - 1898; March 1890

Bound in – *Nurserymen’s catalogues. Britain (3)*

- Catalogue of ferns and selaginellas..... 1892

(Nursery at Park Road Nursery, Ashton-on-Mersey)

BLACKMORE AND LANGDON

Twerton Hill Nursery, Bath

- Catalogue of begonias, carnations, etc. 1911; 1913-1917;1919 – 1922

BLAKE & MACKENZIE, LTD.

Islington, Liverpool

- Commercial horticultural printer's catalogue 1935

BLOOMS

The Nurseries, Oakington, Cambridge.

- Korean chrysanthemums and other hardy types 1939

BLOOMS NURSERIES, LTD.

Bressingham, Kiss, Norfolk.

- Hardy perennial and alpine plants 1949

BOLLER, Henry.

Woodfield Nursery, Woodfield Road, Harrow Road, London. W.

Bound in – *Nurserymen's Catalogues. Britain (2)*

- Catalogue of succulent plants, etc..... 1882/1883

BOOTHMAN, Stuart.

Nightingale Nursery, Furze Platt, Maidenhead, Berkshire

- Rock and alpine plants, dwarf shrubs & alpine sundries 1939 – 1940

BOULTON BROS.

The Nurseries, Moddershall, Stone, Staffordshire.

- Conifers, hardy ornamental trees and shrubs, standard trees, rhododendrons, hedging plants, etc..... 1938/1939

BRIGGS-BURY, S. - see "Bank House", Protheroe & Morris

BRINKMAN BROS. Ltd.

Walton Nurseries, Bosham, Chichester, Sussex.

- Brinkman's quality fruit trees No.1 Sept. 1949

BULL, William & Sons

536, King's Road, Chelsea, London.

- Catalogue of seeds..... 1912 – 1914
- Catalogue of bulbs 1912 – 1913
- Catalogue of plants including orchids, new and rare stove, greenhouse & hardy plants, roses, fruit trees, etc. n.d.
- Catalogue of up-to-date hybrid and other orchids n.d.

Bound in – *Nurserymen's catalogues. Britain (1)*

- New fuchsias 1898
 - List of new plants including new fuchsias and new pelargoniums..... 1901
- Bound in – ***Bull’s – Plant Catalogues – 1870 – 185.***
- A retail list of new beautiful and rare plants 1870 – 1875
- Bound in – ***Bull’s – Plant Catalogues – 1876 – 1879***
- A retail list of new, beautiful and rare plants 1876 – 1879
- Bound in – ***Bull’s – Plant Catalogues – 1880 – 1883***
- A retail list of new, beautiful and rare plants 1880 – 1883
 - A retail list of select flower and vegetable seeds, lilies, gladioli, and other bulbs
..... 1880; 1882
- [Description and drawing of Mr. William Bull’s patent plant case – see pages 170 - 173, 1872 catalogue.
Illustration of Bull’s stove house and fernery for new and rare plants – see catalogue dated 1872. The illustration is torn
and the missing parts are kept with the Bull catalogues stored in the blue boxes alongside a photocopy of the complete
illustration.]
- Bound in – ***Bull’s Plant catalogues – 1888 – 1899***
- Catalogue of new beautiful, and rare plants and orchids
..... 1888; 1889; 1892 – 1896 – 1898
 - Catalogue of plants 1899
- Bound in – ***Bull & Sons Seed and Bulb Catalogues – 1894 – 1903***
- Catalogue of seeds..... 1894 - 1895; 1897 – 1901; 1903
 - Tuberous rooted plants and bulbs 1896 – 1899
 - Catalogue of bulbs..... 1899 – 1903

BULLEY, A.K.,

Ness Gardens, Neston, Cheshire.

- Catalogue of seeds 1925; 1927
- A. K. Bulley engaged George Forrest, F. Kingdon-Ward and R.E. Cooper to collect plants for his garden
which is now the Botanic Garden of Liverpool]

BUNYARD, George, & Co.

The Royal Nurseries, Maidstone Kent.

- Descriptive catalogue of fruit trees and roses 1905 – 1917
- Descriptive list of strawberries, summer fruits, Dutch bulbs & carnations, grape
vines & figs 1905 – 191
- Supplement to general fruit catalogue with additional list of novelties on other
departments 1908/09
- List of bedding out plants season 1906
- Catalogue of hardy herbaceous plants 1907 – 1910
- Catalogue of hardy herbaceous, alpine and aquatic plants n.d.
- List of hardy climbers 1908
- A descriptive catalogue of superior home-grown & genuine seeds for the
vegetable and flower garden 1907 - 1911
- Catalogue of fruit trees 1919/1920; 1925/26
- Catalogue of roses 1925/26

- Catalogue of trees and shrubs n.d.
 - A descriptive list of the best strawberries and violets n.d.
 - List of novelties 1915
- Bound in – *Nurserymen’s catalogues. Britain (2)*
- Spring catalogue of hardy herbaceous plants, pot roses, carnation, May bedding out plants, climbers, etc. 1897
 - A list of general nursery stock n.d.
 - A descriptive list of strawberries, grapes, and other summer fruits together with list of the best roses 1897/98; 1902/03
- (Bunyard & Co. can also be found at the Allington Nurseries, Barming Station, Kent.)

BURPEE, W. Atlee. & Co. (Philadelphia)
 Seed Growers, 133, Cannon Street, London. E.C.
 Bound in – *Nurserymen’s Catalogues. Britain (4)*

- American seed for English Gardens..... 1887

C

CAMLA GARDENS

Feltbridge, East Grinstead, Sussex.

- Alpine and other plants for disposal 1938/39

CANNELL, H. & Sons

Horticultural Establishment, Swanley, Kent.

- Catalogue of cacti and succulent plants (pre 1914) n.d.
- Bound in – *Cannell & Sons – Floral Guide – 1882 – 1885; 1890 – 1898*
- Complete illustrated floral guide..... 1882; 1885; 1890; 1891; 1896; 1898
- (Portrait of Henry Cannell see 1891, page 1. Portrait of Edward banks, Fuchsia grower, see 1896, page XV)
- Bound in – *Cannell & Sons - Seed Catalogues – 1890 – 1898*
- Complete and illustrated list of their own true home-grown and saved vegetable and flower seeds..... 1890; 1895; 1898

CANT, Benjamin. R.

Old Established Rose Gardens, Mile End Road, Colchester.

Bound in – *Nurserymen’s catalogues. Britain (2)*

- Descriptive rose catalogue Aut. 1899/Spring 1900

CANT, Frank, & Co.

Braiswick Rose Gardens, Colchester.

- Rose catalogue 1903/04; 1908 – 1915
- Bound in – Frank Cant & Co. – Rose Catalogues – 1894 – 1903*
- Rose catalogue..... 1893; 1899 – 1902

CARTER, James, & Co.

237 – 238 & 97, High Holborn, London.

- Catalogue of flower roots..... 1837
- Catalogue of a choice collection of floricultural seeds 1840
- Grass seeds 1896
- Garden and lawns (seeds)..... 1909; 1911
- Garden and lawn (seeds) 1912; 1914; 1916; 1918
- Bulbs 1910 – 1912
- Farm 1910
- Tested seeds (flower and vegetable) 1910; 1914
- List of choice herbaceous, alpine and other plants n.d.; 1899/1900

Bound in – *Nurserymen’s catalogues. Britain (2)*

- New crossbred and other standard varieties of wheats with particulars of farm crops for autumn sowing 1889; 1892

Bound in – *Carter & Co. – Seed catalogues – 1890 – 97*

- Seed catalogue..... 1890; 1891; 1893; 1894
- Tested farm seeds..... 1897

(Also – 53a Queen Victoria Street, London; The Nurseries, Houston Road, Forest Hill, London; Raynes Park, London.)

CHARLESWORTH & Co., Ltd.

Haywards Heath, Sussex.

- Descriptive catalogue of orchids..... 1902; 1904 – 1912; 1914; 1937/38

Bound in – *Charlesworth & Co. – Orchids – 1891 – 1903*

- A select list of rare and beautiful orchids (includes a list of hybrids) 1891 - 1895
- Descriptive catalogue of orchids..... 1900 -1903
- An illustrated catalogue of the well known orchid collections formed by M. Robinow, Esq., Hawthornden, Didsbury, Manchester and Edward H. Woodall, Esq., St Nicholas House, Scarborough(c. 1900) n.d.

CHEAL, J. & Sons

Lowfield Nurseries, Crawley, Sussex.

Bound in – *Nurserymen’s Catalogues. Britain (1)*

- Descriptive catalogue of hardy herbaceous, alpine, rock & border plants n.d.

Bound in – *Nurserymen’s Catalogues. Britain (4)*

- Catalogue of dahlias, chrysanthemums, bedding plants, carnations, phloxes, violas, etc. Spring 1895
- Catalogue of ornamental trees and shrubs, American plants, roses, etc. n.d.

CHESTER PARK - see Protheroe & Morris.

“CLARE LAWN” - see Protheroe & Morris

CLIBRANS Ltd.

Nurserymen, and Seedsmen, Hale, Altrincham.

- Trees, shrubs and climbers season 1937/38
(Nurseries at Hale, Altrincham, Timperley and Ashley.)

COLE & Son

Midland Road Nursery, Peterborough.

- Chrysanthemums, fuchsias, dahlias, pelargoniums 1952/53

CONSTABLE, W.A. Ltd.

The Lily Gardens, Southborough, Tunbridge Wells.

- Constable's lilies circa 1936
- Constable's lilies, miscellaneous bulbs, alpine & herbaceous plants, shrubs, etc.
..... Autumn 1946

COOLING, Geo. & Sons.

The Nurseries, Bath.

Bound in – *Nurserymen's Catalogues Britain (7)*

- Roses, fruit trees, ornamental trees & shrubs..... Spring 1899

COOMBE WOOD NURSERY, Kingston Hill. see Veitch, James.

[A description of the nursery can be found in *The Garden*, May 9th. 1874. Page 396-398, includes illustration]

COOPER, Robert.

Nurseryman, Seedsmen and Florist, Sion Nursery, Croydon.

(Filed under Warner & Warner)

- Catalogue of choice flower seeds, etc. 1845
- Catalogue of plants..... 1845

COWAN, John. & Company

Gateacre Nurseries, Gateacre, near Liverpool.

Bound in – *Nurserymen's catalogues Britain (7)*

- Catalogue of vegetable and flower seeds 1899

CRANSTON'S NURSERY & SEED COMPANY, Ltd.

King's Acre, Near Hereford.

Bound in – *Nurserymen's catalogues Britain (7)*

- An abridged list of forest trees, fruit trees, shrubs, etc. Aut/Spr. 1880/81

CRISPIN, James, Esq. - See Chester Park, Protheroe & Morris.

CUTHBERT, George.

Southgate Nurseries, Southgate, Middlesex.

Bound in – *Nurserymen’s Catalogues. Britain (1)*

- Catalogue of selected azaleas and other forcing plants n.d.

CYPHER, James

Exotic Nurseries, Queen’s Road, Cheltenham.

Bound in – *Nurserymen’s Catalogues Britain (7)*

- Orchid catalogue n.d.
- General catalogue n.d.

D

DAVIS, B.R.

Yeovil Nurseries, Yeovil, Somerset.

Bound in – *Nurserymen’s Catalogues. Britain (4)*

- Tuberous begonias 1897

DERBYSHIRE, Henry.

Nurseryman, Darley Hill Side, Near Matlock, Derbyshire.

Bound in – *Nurserymen’s Catalogues. Britain (1)*

- Trade catalogue of trees, shrubs, etc. season 1880/81

DICKSONS

Royal Seed and Bulb Warehouses & Nurseries, Eastgate Street, Chester.

- Choice flowering bulbs, etc. 1905 – 1909
- Ornamental & forest trees, covert plants, climbers, shrubs, etc. 1910 - 1912
- Ornamental & forest trees, shrubs, etc. 1912 – 1914
- Forest trees, ornamental trees, shrubs, etc. 1905 – 1907;1915/16; 1923/24
- Catalogue of general nursery stock 1907/08
- Garden seeds, etc. 1907 – 1909
- Select vegetable and flower seeds 1906
- Catalogue of roses/rose trees 1905/06;1908 – 1910
- Fruit and rose trees 1906/07
- Evergreen grass seeds January 1906 – 1908
- Summer bedding and border plants, dahlia, etc. 1905 – 1908
- Chrysanthemums 1913 – 1915

Bound in – *Nurserymen’s Catalogues. Britain (3)*

- Choice flowering bulbs, etc. 1901; 1902
- Catalogue of general nursery stock (in 6 parts) 1901; 1902/03

1. Forest trees, deciduous ornamental & flowering, shrubs, climbers, etc.
2. Fruit trees including vines, figs, etc.
3. Roses
4. Herbaceous and alpine plants, aquatics, culinary roots, etc.
5. Stove and green house plants.
6. Implements, manures and sundries.

Bound in – **Dicksons. Chester. Trees, Shrubs, etc., – 1890 – 1900**

- Forest & ornamental trees, evergreens, etc. 1890 – 1893; 1896 – 1901

Bound in – **Dicksons. Chester. Vegetable & Flower Seeds, etc. -1892 - 1903**

- Vegetable & flower seeds, seed potatoes, garden tools & sundries ... 1892 – 1893
- Select vegetable & flower seeds, seed potatoes, garden tools & all garden requisites..... 1895 - 1903
- The best farm seeds 1899

Bound in – **Dicksons. Chester. Fruit & Rose Catalogues, - 1892 – 1900**

- Select fruits..... 1892
- Select fruit trees 1898
- Strawberries..... 1898 – 1900
- Select roses 1892/93; 1895 – 1901

Bound in – **Dicksons. Chester. Plant Catalogues, 1897 – 1902**

- Bedding & border plants, dahlias, new roses, etc. 1897 – 1902
- New, large yellow tree carnation, ‘Duchesse Consuelo’ 1899

Bound in – **Dicksons, Chester. Bulbs, etc. – 1895 – 1900**

- Descriptive catalogue of Dutch and other flowering bulbs, etc..... 1895 – 1897
- Flowering bulbs, etc. 1898 – 1900
- Strawberries 1897

(Nurseries at:- Newton; Upton and Queen’s Park. Branches at:- Newtown, Montgomeryshire; Pwllheli, Carnarvonshire. Description of ‘Messrs F. & A. Dickson & Sons’ Upton Nurseries, Chester’ *see The Garden*, Jan. 10. 1874.)

DOUGLAS, James.

Edenside, Great Bookham, Surrey.

- Hardy border carnations and the Douglas cloves 1948/49

E

The EARLSWOOD NURSERIES, Ltd.

Earlswood Nurseries, Earlswood, Redhill, Surrey.

Bound in – **Nurserymen’s Catalogues. Britain (9)**

- Alphabetical and descriptive catalogue of chrysanthemums with cultural hints, including all the newest & best incurved, Japanese, anemones, singles, pompones, etc..... 1894/95; 1901/02

EDMUNDS (Milton), Ltd.

Milton, Cambridge.

- Bulbs, seeds & plants 1941

ELLIOTT, Clarence. Ltd.

Six Hills Nursery, Stevenage, Herts.

- Seeds of choice alpine and herbaceous plants together with a few inexpensive, popular and indispensable hardy annuals 1925 – 1926

Bound in – *Clarence Elliott. Catalogues. 1910 - 1914*

- Catalogue of alpine and herbaceous plants (catalogue covers removed by binder). 1910-14

Bound in – *Clarence Elliott. Catalogues. 1914 - 1920*

- Catalogue of choice bulbs 1914 – 15
- Catalogue of choice seeds of flowers, alpines and vegetables 1914 - 1916
- Catalogue of alpine and herbaceous plants 1916; 1920

F

FISHER & Son, & SIBRAY, Ltd.,

Royal Seed Warehouses, 4, Market Street, Sheffield.

Bound in – *Fisher, Son & Sibray, Ltd. Trees & Shrubs. 1905 – 1914*

- Catalogue of general nursery stock (covers removed by binder) 1905 - 1914

Bound in – *Fisher, Son & Sibray, Ltd. Seeds. 1906 – 1914*

- Catalogue of vegetable & flower seeds & gardeners' requisites (covers removed by binder) 1906 - 1914

Bound in – *Fisher, Son & Sibray, Ltd. – Bulbs. 1905 – 1914*

- Catalogue of general nursery stock* 1905 - 1914
- Catalogue of imported bulbs, flower roots, etc.
- Catalogue of gardeners' requisites

*Includes a descriptive list of kitchen and dessert apples.

All covers removed by binder.

THE FOREST NURSERIES, Ltd.

Darley Dale, Derbyshire.

- Trade price list (forest, ornamental trees, shrubs, heathers, etc.) 1936/37

G

GALPINE, John. Kingston.

Nursery & Seedsman, at Blandford, Dorset.

Book collection - This is a facsimile contained in the following:- GALPINE, J.K., The Georgian Garden: An eighteenth century nurseryman's catalogue. Dorset: The Dovecot Press, 1983.

- A catalogue of the most useful & ornamental hardy trees, shrubs, plants, etc., also of the herbaceous plants, fruit trees, garden seeds, flower roots, flowering shrubs, etc..... 1782

GARTONS, Ltd.

The Scientific Farm Plant Breeders, Warrington.

- New and regenerated breeds of wheats, oats, barleys, etc. Autumn 1923
- Farm annual of new & regenerated breeds of seeds including cereals, roots, grasses, clovers and all other agricultural seeds 1926

GAUNTLETT, V.N. & Co. Ltd.

Green Lane Nurseries, (Japanese Nurseries), Redruth.

- Special list of Himalayan and other rare rhododendrons..... n.d.
- New Japanese varieties (Iris, tree paeony, liliams, maples) n.d.
- Nymphaeas (leaflet) n.d.
- Hardy nymphaeas, coloured water lilies (leaflet) 1902;1907
- Hardy plants worth growing..... n.d.

Chiddingfold, Surrey.

- Hardy plants worth growing. [Various without date or catalogue number but circa. 1920s] (Catalogue Nos. 90; 97; 101) c. 1920

Bound in – *Nurserymen’s Catalogues. Britain (5)*

- Rare hardy plants (Circa 1900) n.d.
- Hardy plants, for wild gardens, lakeside, woodland walks, aquatics, bog and marsh plants, climbers for trees, bare places, plants for under trees, etc. n.d.
- Hardy plants worth growing n.d.
- Hardy shrubs ad trees n.d.
- Catalogue of hardy bamboos, hardy palms, Japanese maples, Himalayan rhododendrons and rare plants (circa 1900)..... n.d.

GILL, R. & Son

Himalayan Nurseries, Penryn, Cornwall.

- Himalayan, Chinese and other rhododendrons, etc.(circa 1927) n.d.

GODBER, Isaac. Ltd

Willington Nurseries, Near Bedford.

- Wholesale list of chrysanthemums 1949; 1951

GIRLING

No address given. (Filed under Warner & Warner)

- Descriptive catalogue of florist’s flowers for the Spring of 1845

GUILDFORD HARDY PLANT NURSERY

Millmead Nursery, Guildford.

Bound in – *Nurserymen's catalogues Britain (5)*

- General catalogue (circa 1900) n.d.
- New, rare, neglected, or recommended hardy plants..... Aut/Spring 1900/01
- Select herbaceous, alpine, and other hardy garden plants n.d.

H

HARKNESS & Sons,

The Grange Nurseries, Bedale, Yorkshire.

- Floral guiden.d. (1903?)

HARRISON, Joseph.

Nurseryman, Downham Norfolk. (Filed under Warner & Warner)

- Fuchsias, pelargoniums, chrysanthemums, petunias, phloxes & verbenas . 1845
- Harrison's dahlias (catalogue No 2.) 1845

HAYES, T.R.

The Branch Nurseries, Crosthwaite.

- Catalogue of hardy plants n.d.

HENDERSON, E.G. & Son.

Wellington Road, St. John's Wood, London. N.W.

Bound in – *Nurserymen's Catalogues Britain (6)*

- Catalogue of bulb and flower roots 1872

HILL, J. & Son.

Barrowfield Nurseries, Lower Edmonton, Middlesex.

- Catalogue of ferns 1908

Bound in – *Nurserymen's catalogues Britain (6)*

- Price list of stove and greenhouse ferns n.d.

HILLIER & Sons.

West Hill Nurseries, Winchester.

- New hybrid poplar; *Populus generosa* (postcard) 1917
- Planters guide and catalogue of hardy trees & shrubsnos. 32-34, 1920-1923
- Trees and Shrubs..... 1971-72
- Supplementary list of trees & shrubs (new & rare), 1921/22; 1930
- List of new & rare hardy Chinese shrubs (pamphlets) 1921-1922
- Abridged list of trees, shrubs & hedge making plants and forest trees ... 1913/14

- Abridged list of forest trees, shrubs, hedge-making plants, shelter and ornamental trees 1922/23
- Topiary trees, clipped yews, bays box, etc n.d.
- Hardy perennials, alpines, water plants, etc..... 1929-1930

HILLING, T. & Co.

Chobam, Woking.

- Hilling's wholesale catalogue, fruit, forest & ornamental trees, rhododendrons, roses, conifers, shrubs, climbing, alpine & hardy plants 1946 – 1947

HOLDEN CLOUGH. NURSERY.

Bolton-by-Bowland, nr. Clitheroe, Lancashire.

- Catalogue of hardy & alpine plants..... 1932

HOLMES, W. H.

Landscape Gardener, Nurseryman & Florist, Sidbury Nursery, Derbyshire.
(Filed under Warner & Warner)

- Calceolarias1845

HOUSE, Isaac & Son

Westbury-on-Trym, Bristol.

- Trade catalogue of the leading varieties of Scabiosa Caucasica, etc..... 1938

HUDSON. W.H.

199, Highroad, Kilburn, London. N.W.

Bound in – *Nurserymen's Catalogues. Britain (1)*

- Bulbs, Japanese lilies, seeds, special manures.
- Choice & select vegetable and flower seeds, lilies, bulbs & manures..... n.d.

Bound in – *Nurserymen's Catalogues Britain (6)*

- Dutch, Japanese and other flower bulbs & various, roots, seeds, etc. 1877

HUNTER, James.

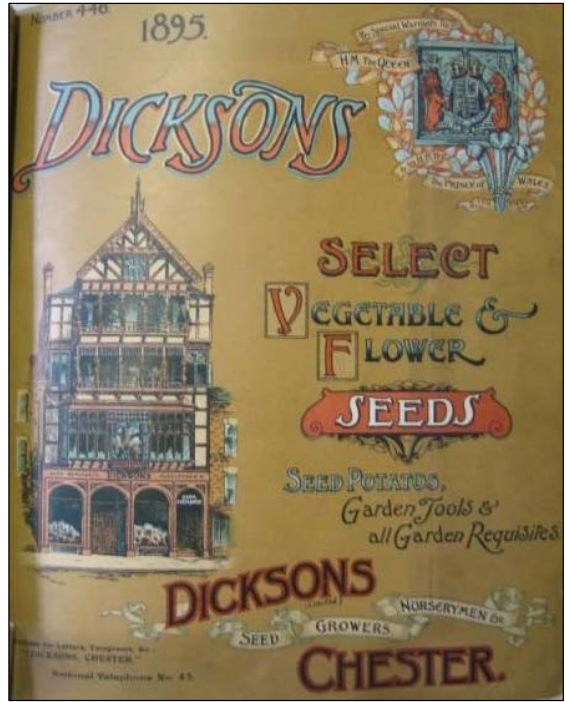
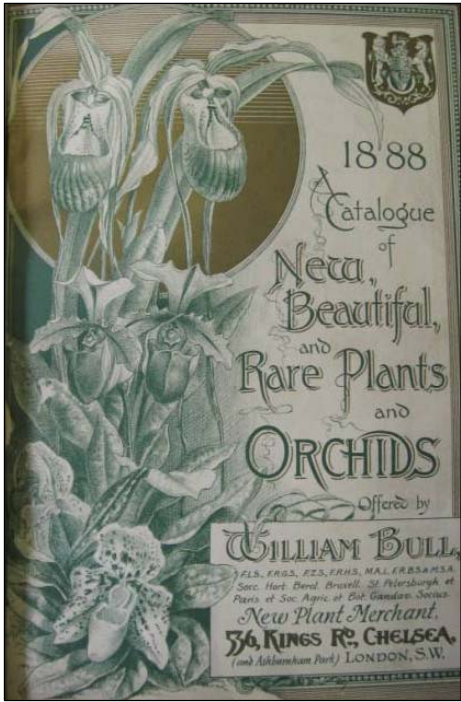
Chester.

Bound in - *Hunter – Agricultural Seeds: Treatise on Pasture Grasses – 1902 – 1915*

- Agricultural seeds (Covers removed by the binder)..... 1902 – 1915

Various articles on meadows and pastures, e.g.

- Permanent pasture grasses, and the adulteration of their seeds, (illustrations)
- Artificial grasses, (Clovers, etc).
- Natural grasses
- The Clifton Park system of farming.



HYE de CROM, M. Jules. *See Protheroe & Morris*

I

INGWERSEN, W. E. Th., Ltd

Birch Farm Nursery, East Grinstead, Sussex.

- Advance list of seeds of hardy & alpine plants saved this season 1927
- Seed list of hardy and alpine plantsAutumn/Spring 1926-27
- Seed list for 1935

J

JACKMAN, George & Son

Woking Nurseries, Woking, Surrey.

- A catalogue of plants cultivated and sold by Geo. Jackman & Son
..... Autumn & Spring 1904 – 1907; 1938 - 1939
 - The planter's handbook; a catalogue of plantsAutumn/Spring 1936-37
 - Special catalogue; hardy herbaceous, alpine, bulbous & border plants n.d.
- Bound in – *Nurserymen's Catalogues. Britain (1)*
- Catalogue of hardy alpine, herbaceous, bulbous and border plants..... n.d.
- Bound in – *Jackman & Son. Plant Catalogues. 1896 – 1902*
- A plant catalogue..... 1896 – 1902

JACKSON, Thomas & Son

Nurserymen, Seedsmen, Kingston, Surrey

Bound in – *Nurserymen's Catalogues Britain (6)*

- Catalogue of plants..... 1879; 1880
(Nurseries at Clarence Street, Park Road and Kingston Hill.)

JEFFRIES, John & Son

Seed & Bulb Establishment, Market Place, Cirencester.

Bound in – *Nurserymen's Catalogues. Britain (8)*

- Illustrated catalogue of Cotswold Roses 1897/98
(Rose Nurseries at:- London Road, Cirencester; Somerford Keynes, Gloucester.)

JONES, Gavin. Nurseries.

Letchworth, Herts.

- Catalogue of hardy plants..... 1931

JONES, H.J.

Ryecroft Nursery, Hither Green, Lewisham, S.E.

- Portfolio of new chrysanthemums 1901
- Bound in – *Nurserymen’s Catalogues Britain (6)*
- Chrysanthemum catalogue 1899/1900; 1893
 - Descriptive catalogue of new & choice plants also a concise list of the best vegetable and flower seeds for 1901

JONES & Sons

Seedsman and Nurserymen, 7, Shoplatch, Shrewsbury.

Bound in – *Nurserymen’s Catalogues. Britain (1)*

- List of sweet peas (circa 1900)..... n.d.

K

KELWAY & Son

Langport, Somerset.

- Kelway’s manual..... 1905;1906/07
- Kelway’s paeonies..... No. 10, 1927/28
- Kelway’s hardy perennials & colour borders 1930/31
- Kelway’s (bulbs) 1939

Bound in – *Kelway & Son. Manual of Horticulture. 1898 - 1903*

- Manual of horticulture; seeds, plants & bulbs 1898 – 1903

KENNEDY, Robert

Covent Garden, London. W. C.

- Catalogue of ferns, exotic & indigenous..... 1860

KEW TOPIARY NURSERIES

Stanmore Road, Richmond.

See Klinkert, John.

KEYNES, J.

Florist, Winchester Street, Salisbury.

- Dahlias (Filed under Warner & Warner) 1845

KLINKERT, John

46, Beaumont Avenue, Richmond, London, S.W.

- Bulbs, herbaceous & alpine plants, roses, trees & shrubs n.d.
- Clipped yew and box trees 1936; n.d.
- Decorative features with a difference 1945

KNAP HILL NURSERY, Ltd.

Woking, Surrey.

Bound – *Periodical collection*

- Knap Hill Nursery Bulletin, Vols 1 – 5 (imp.) 1933 – 1937

These bulletins often provide a very short history/description of the chosen plants, their geographical area of origin and the plant hunter responsible for its introduction.

See also entry for WATERER, Anthony.

KNIGHT'S NURSERIES, Ltd.

Hailsham, Sussex.

- Wholesale catalogue of alpine plants 1949

L

LADHAMS, B.

The Shirley Nurseries, High Street, Shirley, Near Southampton.

Bound in – *Nurserymen's Catalogues. Britain (8)*

- Catalogue of choice hardy perennials 1896

(Nurseries:- Shirley Warren; Seed Stores - 55, High Street, Shirley.)

LAING, John & Sons

Nurseries, Forest Hill, London, S.E.

Bound in – *Laing & Sons. Plant Catalogues*

- General illustrated plant catalogue of tuberous begonias, caladiums, clivias, orchids and plants of all kinds, etc. (*circa 1895*) n.d.
- Special begonia catalogue 1896
- Special herbaceous plant catalogue n.d.
- Special caladium catalogue n.d.

(Nursery also at Catford, Kent.)

LANGFORD, J.

The Nurseries, Withington, Manchester.

- Catalogue of perennials, florist's plants, etc. 1903

LAXTON BROTHERS, Ltd.

Bedford.

- Shrubs and trees, conifers, hardy herbaceous & rock plants, climbers 1938
- Fruit trees and small fruits 1939

LETTS, George. Frederick. & Son.

Nurserymen & Seedsmen, 45, Hadleigh, Suffolk.

- Roses, fruit trees, shrubs & plants Autumn & Spring list/1924-25; 1927-28

LITTLE and BALLANTYNE

Seed Growers & Nurserymen, Carlisle.

- Trees; forest & game covert, fruit, ornamental & evergreens, alpiners, roses, etc.etc. 1906-1914; 1920-1921
- Abridged war catalogue of forest trees 1918
- Farm seeds 1911

Bound in – *Nurserymen’s Catalogues. Britain (13)*

- Garden seeds 1897 – 1899; 1901
- Vegetable and flower seeds 1902; 1903

Bound in – *Little & Ballantyne. Bulb Catalogues. 1893 – 1900*

- Catalogue of flowering plants & bulbs 1893 - 1900

Bound in – *Little & Ballantyne. Seed Catalogues. 1876 - 1900*

- Spring Seed Guide 1876
- Catalogue of garden seeds..... 1894; 1895; 1896
- Catalogue of farm seeds 1894; 1896; 1899; 1900

Bound in – *Little & Ballantyne. Trees. 1894 – 1903.*

- List of trees & shrubs; forest & ornamental, 1894 - 1895; 1899 – 1903

LOCKHART, T. and C.

Florists & Seedsmen, 156, Cheapside, London.

Nursery at Parson’s Green, Fulham.

- Catalogue of bulbs and flower roots 1845

LODDIGES, Conrad & Sons,

Nursery & Seedsmen at Hackney nr. London.

Bound - *book collection* - Contained in - Loddidges & Sons., Catalogue of plants which are sold by Conrad Loddiges & Sons, nurserymen and seedsmen of Hackney, nr. London., London: Wildon, 1818

- Catalogue of plants 1818

LORD, Thomas.

Holebottom, Todmorden, West riding, S.W. Yorkshire.

- Catalogue of carnations, picotees & auriculas 1907-08; 1908-09

LOW, Hugh & Co.

Royal Nurseries, Bush Hill Park, Enfield, Middlesex.

- Catalogue of plants, trees & shrubs, etc. (1905?) n.d.
- Fruit trees & roses (1907?) n.d.
- General catalogue of greenhouse, New Holland & stove plants n.d.
- Malmaison carnations, new & scarce roses & water lilies 1904
- Carnations 1905-1909; n.d.
- General catalogue of greenhouse, New Holland and stove plants c. 1906

Bound in – *Nurserymen’s Catalogues Britain (6)*

- New and desirable plants n.d.
- Catalogue of plants, shrubs and trees, etc. n.d.
- Catalogue of fruit trees and roses..... n.d.
- Catalogue of orchids 1896/97

Bound in – *Nurserymen’s Catalogues. Britain (8)*

- General plant catalogue..... n.d.
- Catalogue of plants* n.d.
- Catalogue of orchids* n.d.

Bound in – *Nurserymen’s Catalogues. Britain (9)*

- ‘Popular’ orchid list..... n.d.
- Special list of orchids n.d.

(* Hugh Low & Co., Clapton Nursery, London, N.E.)

(Nursery at Upper Clapton, London, N.E.)

LOW, Stuart & Co.

Royal Nurseries, Bush Hill Park, Middlesex.

- Trade list of fruit, trees & roses n.d.
- Roses n.d.
- Carnations n.d.
- Orchids 1937

LUCOMBE, PINCE & Co

Exeter Nursery, Exeter.

Bound in – *Nurserymen’s catalogues Britain (5)*

- New rare and popular plants, grape vines, exhibition plants, etc. (1878?)..... n.d.

LUXFORD, Keith. & Co.

Sawbridgeworth, Herts.

- Chrysanthemums 1947

M

MAHOOD Bros.

The Nurseries, Burscough Bridge, Ormskirk, Lancashire.

- Fruit trees..... n.d.
- Hedging plants n.d.
- New crop seed (asparagus) n.d.
- Cauliflower plants n.d.

MARCHANT. W.J.

Keeper’s Hill Nursery, Stapehill, Wimborne, Dorset.

- Choice trees, shrubs, wall plants and climbers 1937

MAWSON Bros.

Windermere Nurseries.

- Catalogue of hardy plants 1907
(Nursery also at Bowness, Windermere)

MAY, H.B. & Sons. Ltd.

Dyson's Lane Nurseries, Upper Edmonton, Middlesex.

- Catalogue of ferns 1907
- Catalogue of British, hardy exotic & filmy ferns n.d.
- Ferns & Selaginellas 1913

MERRYWEATHER, H. *see* Merryweather & Sons

MERRYWEATHER, & Sons, Ltd.

The Nurseries, Southwell, Nottinghamshire.

- Nursery catalogue 1905 - 1906
 - Catalogue of roses, fruit trees & shrubs 1906 - 1917
- Bound in – *Merryweather. Trees, Shrubs, etc. 1893 – 1903*
- Catalogue: Fruit trees, roses, etc, and advice to fruit tree planters
..... 1893; 1899 - 1901
 - Spring catalogue: Seeds, herbaceous plants, roses in pots, novelties, etc.
..... 1896; 1900; 1901
 - Nursery catalogue..... 1901 – 1903
(Original nursery founded by Henry Merryweather who introduced Bramley's seedling apple.)

MIDDLE GREEN FARM, SLOUGH *see* VEITCH, James. & Son

MOORE, LTD.

Rawdon, via Leeds.

- Catalogue of importation of orchids, Burmese Lilies, lists 3-6 (early 1900s?) n.d.
- Special Autumn sale catalogue. Orchids (illustrated)..... n.d.
- Special sale catalogue of Orchids 1907;1908
- Reconstruction sale: A large & choice collection of orchids..... 1908
- Clearance sale: Orchids..... 1909
- Yatton Hall collection of orchids (Chas. E. Francke)..... n.d.

MURRAY, James. & Sons.

Deptford, London. S.E.

- Murray's bulbs 1905; 1907-08
- Bulbs with a world wide reputation n.d; 1911-1912

- Bulbs & plants Spring 1906
- Murray's seeds (flower and vegetable) 1906 – 1908

MURRELL, R.

Specialist in Rose Culture, Rose Acre, Shepperton-on-Thames.

- My favourite roses and why 1914-1916; 1920-1921

The NEW PLANT AND BULB COMPANY,

New Plant and Curio Merchants, Lion Walk, Colchester.

Bound in – *Nurserymen's catalogues. Britain (10)*

- A retail list of Japanese & other lilies, orchids, bulbs, etc. 1877- 1880

OSBORN & Sons

The Fulham Nurseries, London, S.W.

Bound in – *Nurserymen's Catalogues. Britain (10)*

- General catalogue of stove and greenhouse plants, ferns, etc., including novelties 1880

Bound in – *Nurserymen's Catalogues. Britain (12)*

- Catalogue of hyacinths, tulips and other choice flower roots Autumn 1879
(Nursery grounds located at Sunbury and Hampton, Middlesex.)

PARKER, Robert

Exotic Nursery, Tooting, Surrey, S.W.

Bound in – *Nurserymen's catalogues. Britain (10)*

- A catalogue of aquatic and marsh plants, miscellaneous hardy plants, suitable for bedding and decorative purposes, sweet violets, fruit trees, etc. 1879

PAUL & Son

The Old Nurseries, Cheshunt, Hertfordshire.

Bound in – *Nurserymen's Catalogues. Britain (11)*

- Herbaceous and alpine plants (supp. to catalogue) 1894
- Hardy herbaceous and alpine plants n.d.
- Rose catalogue Autumn 1890; Autumn 1897

Bound in – *Nurserymen's Catalogues. Britain (13)*

- Spring list of new roses, cannas, dahlias, phloxes etc. 1895-96; 1898
(Also located at Herbaceous and Rock Garden, Broxbourne, Herts. George Paul was the nephew of William Paul.)

PAUL, William. & Son.

Pauls' Nurseries, Waltham Cross, Hertfordshire.

- Catalogue of bulbs & other winter & spring flowers Autumn 1905 – 1913
- Catalogue of fruit trees c. 1909
- Catalogue of hardy trees & shrubs & herbaceous plants c. 1911
- Catalogue of seeds and garden sundries 1908/09

- Catalogue of roses 1904/05 – 1916/17
 - Catalogue of new roses, roses in pots, cannas, phloxes, & other plants for Spring planting(Exc. Spring 1908).....Spring 1903 – Spring 1915
- Bound in ***Paul & Son. Catalogues. 1884 – 1903***

- Catalogue of roses Aut/Spring.1884/85; 1886/87; 1899/1900; 1900/1901; 1901/1902; 1902/1903
- New roses, geraniums, etc, etc, Spring catalogue.....1886; 1900; 1901; 1902
- Special catalogue of roses, fruit trees, grape vines, avenue & roadside trees, etc, evergreens, climbing plants, greenhouse plants, etc. Aut. 1886
- Catalogue of bulbs and winter flowersAut. 1900; 1901; 1902
- Catalogue of hardy trees & shrubs and herbaceous plants n.d.

PEED, John. & Son.

West Norwood, London. S.E. 27.

- Stove and greenhouse plants 1926

PERFECT, William & John.

Nursery-men & Seeds-men, Pontefract, Yorkshire.

Book Collection - Contained in - HARVEY, John., *Early Gardening Catalogues.* Chichester: Phillimore & Co. Ltd., 1972. (facsimile, pages 101- 116)

- A catalogue of forest-trees, fruit-trees, ever-green and flowering-shrubs ... 1777

PERRY, Amos.

Hardy Plant Farm, Winchmore Hill, London. & Enfield, Middlesex.

- Catalogue of bulbs and plants 1898
- Catalogue of hardy border & rock plants 1898
- Various supplements to 1898/9 catalogues..... 1898
- Catalogue of bulbs & first class perennials..... 1899
- Japanese, American & European lilies No. 235 1925
- Hardy plants for the water garden No. 239..... 1926
- Hardy plants – Spring supp. – No. 240..... 1926
- Gladiolus & Japanese lilies No. 241 1926
- Alpines & perennials - Spring supp. – No. 339 1938

Bound in ***Perry. Bulbs, etc. 1896 – 1903***

- Catalogue of Dutch bulbs, lilies, iris, narcissus, etc. Aug 1896; 1897
- Catalogue of hardy perennials, etc..... Spring 1897
- Catalogue of hardy border and rock plants, new fruits, new flowering shrubs, roses, climbers, hardy orchids, etc.1899 - 1900
- Supp. to parts 1 & 2 of Perry's catalogue – hardy border and rock plants, cannas, etc. Spring 1901; 1903
- Catalogue of bulbs & tubers (part 1) Aut. 1901

- Catalogue of hardy border & rock plants (part2)..... Aut./Spr. 1901/02
 - Catalogue of water plants..... 1903
- Bound in - *Perry. Bulbs, etc. 1904 – 1909; 1909 – 1912; 1912 – 1917; 1918 – 1924.*
- Various catalogues covering border & rock plants; bulbs; new & rare flowering shrubs & trees; fruit & fruit trees; hardy ferns; aquatics; bamboo; seeds, etc.....
..... 1904 - 1924

PIPER. G. W.

Rose Grower, Nurseryman and Florist, The Nurseries, Uckfield, Sussex.

Bound in – *Nurserymen’s Catalogues. Britain (11)*

- A descriptive catalogue of roses 1901/02
- Supplementary list of new roses Aut./Spring 1902/03

PITT, H.T. Esq. see “Rosslyn”, Protheroe & Morris

PRICHARD & Co.

‘Alpine Nursery’, Westmoors, Dorset.

- Catalogue of choice rock & alpine plants1913(?)

PRICHARD, Maurice.

The Nurseries, Christchurch, Hants.

- Hardy perennials. Part 2. Bulbs for autumn planting..... Aug. 1904
- Herbaceous & alpine plants Nos. 15-17..... 1906 – 1908
- Herbaceous & alpine plants, aquatics, climbers, etc. ..Nos. 19-20... 1909 – 1910
- Herbaceous & alpine plants, aquatics, shrubs, climbers, hardy ferns, etc., Nos. 21; 23-26 1912-1920
- Herbaceous & alpine plants, aquatics, shrubs, climbers, hardy ferns, paving plants, special moraine plants, etc. Nos. 27-28 1921-1922
- Hardy perennials, alpine plants, etc n.d.
- Hardy water lilies (Nymphaea) , n.d.
- New & scarce bulbs & plants (Autumn list) n.d.

Bound in – *Nurserymen’s Catalogues. Britain (10)*

- Catalogue of alpine and herbaceous plants containing many novelties*n.d.;1898/99
- List of new and rare bulbs and plants* Autumn 1900
- New, rare and noteworthy plants Spring 1901
- Water plants, hardy gladioli & new perennials (supp.) 1902
- Hardy gladioli* 1903

Bound in – *Nurserymen’s Catalogues. Britain (13)*

- Alpine and herbaceous plants..... 1903

(* Maurice Prichard, Riverslea Nursery, Christchurch.)

PROTHEROE & MORRIS, AUCTIONEERS

Central Auction Rooms, 67-68, Cheapside, London. E.C.

- “**Bank House**” collection of orchids, etc. [S. Briggs-Bury, Esq.] 1906;1908
- “**Burford Lodge**” valuable & unique collection of orchids. [Sir Trevor Lawrence]..... 1916
- “**Chillingham**” collection of orchids. [Rt. Hon. The Earl of Tankerville] 1907;1908;1910
- “**Clare Lawn**” collection of orchids [Sir Frederick Wigan 1907
- “**Chester Park**” collection of orchids [James Crispin, Esq.] 1895
- “**Coundon Court**” collection of orchids [G. Singer, Esq.] 1908
- “**Elmwood**” collection of orchids [J. Wilson Potter, Esq.] 1908
- **The Grange, Southgate.** Entire collection of orchids [J. Bradshaw, Esq.] 1908
- **Hildenley, Malton.** Entire collection of orchids [Sir Charles Strickland]... 1910
- **Hye de Crom, M. Jules** (Ghent) Rare & valuable orchids 1913
- “**Lytham Hall**” collection of orchids [J. Talbot Clifton, Esq.] 1910
- “**Oakwood**” collection of established orchids [Norman C. Cookson, Esq.] 1907
- “**Rosslyn**” choice & rare duplicate orchids [H.T.Pitt, Esq.] 1906
- **Sander & Sons** A catalogue of rare and valuable orchids 1913
- **Sander & Sons** Established & semi established orchids 1908
- **Sander & Sons**, One hundred magnificent orchids 1905;1908
- **Sander & Sons**, One hundred and forty magnificent orchids..... 1907
- **Sander & Sons**, One hundred and fifty magnificent orchids 1909
- **Sander & Sons**, Two hundred magnificent orchids.....1911
- **Sander & Sons**, Two hundred and fifty magnificent orchids1912;1913
- “**Shirley Grange**” collection of orchids [G.H.Rolls, Esq.]..... 1907
- “**Stand Hall**” collection of orchids [Thomas Statter, Esq.] 1905
- **Stanley & Co.** Rare & valuable orchids 1905
- “**Westfield**” collection or orchids. [Francis Wellesley, Esq.] 1908;1913
- “**Willow Wood**” choice selection of Cypripediums. [Drewett, O. Drewett, Esq.]..... 1910

PYE, Septimus

Catterall, Garstang, Lancashire.

Bound in – *Nurserymen’s Catalogues. Britain (10)*

- Descriptive catalogue of show and fancy pansies & violas..... 1895
- Carnations..... 1895
- Descriptive catalogue of carnations, picotees, violas & show and fancy pansiesAutumn 1896

R

REAMSBOTTOM & Co.

Delphinium Nurseries, West Drayton, Middlesex

- 2 x single page leaflets n.d.

RED LODGE NURSERY *see* **ROGERS, W.H. & Son**

REEVES, A. & Co.

Nurseries, Spixworth Road, Old Catton, Norwich.

- Roses, fruit trees & hedging plants, etc. 1940 – 1941

REUTHIE, G. LTD.

Foxhill Nurseries, Keston, Kent.

- Hardy plants; descriptive catalogue of novelties imp) 1904 - 1924
- Bulbous & tuberous plants; alpines & herbaceous plants, etc. (imp) 1903 - 1908
- Supplement to catalogue (bulbs)..... 1910;1911
- New and rare hardy plants..... 1915;1919
- Abridged bulb list of British grown bulbs and a list of new and rare hardy rhododendron of Himalayan, Chinese and other kinds 1916
- Descriptive catalogue: Alpine and hardy perennials, aquatics, bog plants, ferns, foliage plants, shrubs, seeds, bulbs, tubers, begonias, etc 1903
- List of new, rare and best older daffodils..... 1904
- List of seeds collected at Keston during 1915;1916 1915-1916
- Special list of delphiniums, Michaelmas daisies, phlox. n.d.
- General nursery catalogue No. 88 1977

RIVERS, T. Jnr.,

Nurseryman, Sawbridgeworth, Herts.

Book collection – Contained in -RIVERS, T. Jnr., The rose amateur's guide. In two parts. Part 1. The summer rose garden. Part two. The autumnal rose garden., 2nd edition., London: Longman, Orme, Brown, Green & Longmans. 1840.

RIVERS, Thomas., The rose-amateurs guide containing ample description of all the fine leading varieties of roses., *10th edition. London: Longmans, Green & Co., 1872. **11th. edition, 1877.

- An abridged list of roses 1840; *1872; **1877
- A alphabetical list of new roses, many of which have not bloomed in this country..... 1839/1840
- An alphabetical list of show or prize roses, all of which have large and very double flowers 1839/1840

ROGER, R.V.

The Nurseries, Pickering, Yorkshire.

- Trees & shrubs 1938/1939

ROGERS, G.

Nurseryman, Red Lodge Nursery, nr. Southampton

Bound – *Periodical collection* - DAWSON, G., Approaching Southampton by water; and Mr. Roger’s Red Lodge Nursery and American grounds. *The Scottish Gardener*, Vol. 15 1866, page 24 – 29

- A description of the nursery and some of the plants and the ‘American grounds’ 1866

ROGERS, W.H. & Son. Ltd.

Red Lodge Nursery, Bassett, Southampton.

- Catalogue of nursery stock.....Autumn/Spring. 1911-1923
- Catalogue of nursery stock..... 1923-1924
- Abridged catalogue of nursery stock Oct. 1915;Aut/Spring1920/21
- Red Lodge Nursery: Alpines and perennials n.d.
- Rogers’ Spring list: Plant in the Spring 1931

ROLLS, G.H. *see* “Shirley Grange”, Protheroe & Morris

ROSSLYN COLLECTION *see* Protheroe & Morris

ROYAL EXOTIC NURSERY, King’s Road, Chelsea. *see* Veitch, James

ROYAL KEW NURSERIES *see* Kew Topiary Nurseries

RYDER & SON

Seed Specialist, Honeywell Hill, St. Albans.

- Ryders’ P.P. Seeds (penny packet)1906;1916
- Ryders’ seeds..... 1937

S

St. JOHN’S NURSERY, Worcester – *see*- SMITH, Richard. & Co.

SANDER & Co. *see* Sander & Sons

SANDER. F. & Co. *see* Sander & Sons

SANDER & SONS

St. Albans.

- Sander & Co's catalogue. New orchids, reintroductions, rare species & varieties. New Palms, new carnations, new, rare & beautiful foliage plants, handsome flowering plants, decorative plants, etc *circa.* 1899
 - A catalogue of a portion of the Dell Collection of Orchids purchased n.d.
 - A catalogue of portions of various collections of orchids including the remaining unsold plants of our purchase from the Dell Collection..... n.d.
 - A catalogue of orchids*circa.* 1914
 - Various leaflets covering a variety of plants (contained in folder)..... n.d.
- Bound in – *Nurserymen's Catalogues. Britain (13)*
- New and rare orchids 1894; 1895
 - New plants announced for the first time 1894; 1895
- Bound in – *Sander & Co. Orchids, etc. -1896 – 1897*
- Sander's orchid list..... n.d.
 - Catalogue. New orchids, re-introductions, rare species, and varieties, new palms, new carnations, new, rare, and beautiful foliage plants, handsome flowering plants, decorative palms, etc..... n.d.
 - Orchids & new plants including novelties now offered for the first time. ... 1896
 - New orchids 1897
 - New plants 1897

SANDER & Sons, St Albans. See also Protheroe & Morris

SCHMASSMANN, Walter.

Quakers Farm Nurseries, Colliers End, Ware, Hertfordshire.

- Hardy primulae..... 1940

SHARPE, Charles. & Co. Ltd.

Wholesale Seed Growers & Seed Merchants, Sleaford, Lincolnshire.

- Sharpe's seeds (fruit, flower & vegetables) 1948

“SHIRLEY GRANGE” see Protheroe & Morris

SIBRAY see FISHER & Son, & Sibray, Ltd.,

SILBERRAD & Son

25 Savage Gardens, Crutched Friars, London. E.C.

Bound in – *Nurserymen's Catalogues. Britain (14)*

- Trade catalogue of roses coniferous, deciduous & evergreen seedlings
Aut/Spring 1901 - 1903
(Sole agent for Robichon, A. Fils, the Nurseries, Olivet, Orleans, France)

SILBERRAD, R. & SON. Ltd.

118-119 Minorities, London.E.C.3.

- British hydrangeas for forcing 1939

SIM, Robert.

Nurseryman, Foot's Cray, Kent.

- A priced catalogue with brief descriptive & cultural remarks – stove, greenhouse & hardy exotic and British ferns.....circa 1880

SIMONITE, Ben.

10, Derwent Street, Sheffield.

- Catalogue of auriculas, carnations and picotees Aut/Spring 1888/1889

SLOCOCK, Walter. C., Ltd.

Goldsworth, 'Old' Nursery, Woking, Surrey.

- Coniferae, hardy evergreen & deciduous; trees & shrubs, rhododendrons, roses, etc. 1943-1944

SMITH, James., & Sons

Nurserymen, Darley Dale Nurseries, Near Matlock, Derbyshire.

- Catalogue of trees & shrubs 1904 – 1916; Aut/Spring 1949/1950

Bound in – *Nurserymen's catalogues. Britain (14)*

- Wholesale catalogue of trees, shrubs, etc. 1900 – 1903
- List of roses 1902/03

SMITH, Samuel.

Slaghills Nursery, Tansley, Near Matlock, Derbyshire.

- Trade catalogue of trees & shrubs, hardy herbaceous & alpine plants. Autumn/Spring 1939/1940

SMITH, Richard. & Co.

Nurserymen, St. John's Nursery, Worcester.

- Alpine, aquatic, bog, bamboo & other ornamental reeds, grasses, florist flowers and general herbaceous plants..... n.d.
- Bulb catalogue 1905
- Seed list (fruit, vegetables & flowers) 1906
- General Catalogue of nursery stock 1905 – 1909

Bound in – *Nurserymen's Catalogues. Britain (11)*

- Alpine, aquatic, bog, bamboo and other ornamental reeds, grasses, florist flowers and general herbaceous plants..... n.d.
- Plant list..... 1882/83
- List of conifers 1882/83
- Forest, hardy ornamental trees, conifers, etc 1887/88

- Bound in – *Nurserymen’s Catalogues. Britain (13)*
- Catalogue of bulbs..... 1897
- Bound in – *Smith, R. & Co. Seed Lists. 1879 – 1882*
- Illustrated and descriptive seed list1879; 1881-882
- Bound in – *Smith & Co. General Catalogues. 1892 – 1895*
- General catalogue of nursery stock.....1892; 1893; 1895
- Bound in – *Smith, R. & Son. Seed Lists. 1895 – 1896*
- Catalogue of seeds 1895; 1896
- Bound – *Periodical collection - CRAMB, Alexander., Travelling notes on gardens in the midland counties., The Garden, 1869. page 345 -348*
- A description of a visit to the nursery & some of the plants available to buy.
..... 1865
(Seed warehouses located at corner of High street and Broad Street, Worcester)

STANDISH & NOBEL.

Nurserymen, Bagshot, Surrey.

- (Copy extract) Hardy rhododendrons1850 -1855

“**STAND HALL**”, Whitefield, nr.Manchester *see Protheroe & Morris*

STANLEY & Co. *see Protheroe & Morris*

STANSFIELD BROTHERS

Manchester Road, Southport.

- Illustrated catalogue of alpine & hardy perennials 1891
- Bound in – *Nurserymen’s Catalogues. Britain (12)*
- A select list of alpine and hardy herbaceous plants* 1882
 - Illustrated catalogue of alpine and hardy perennials..... n.d.
- (* Address – 60, Percy Street, Southport.)

STANSFIELD, H.

Fern Nursery, Manchester.

- Select list of British, hardy exotic & filmy ferns, No.7 (Spring)..... 1907
- Catalogue of hardy ferns n.d.

STATTER, Thomas. *See “Stand Hall”. Protheroe & Morris.*

STEWART, D. & Son, Ltd.

Ferndown Nurseries, Wimborne, Dorset.

- Seedling & transplanted forest trees (trade). Spring..... 1939

SUTCLIFFE, Thomas.

Floral Gardens, Burscough Bridge, Lancashire.

- Spring bedding plant list, No. 34 1908

SUTTON & SONS

The Royal Seed Establishment, Reading.

Sutton's amateur's guide in horticulture - flower & vegetable seeds*
 1897-1898; 1902-1917; 1920-1921; 1923-1925; 1927; 1929
 (*Includes 1906 centenary edition and the Martin Hope Sutton obituary notice of 1901)

- Food production from the garden 1918
- Food production in the garden & flowers from seed 1919
- Flowers from seeds 1919
- Flowering plants, roses, trees, etc. 1936
- Farmers' year book and graziers' manual 1901 – 1903; 1905
- Seed potatoes 1920
- Seeds for summer and autumn sowing 1923 – 1924
- Sutton's bulbs 1902; 1904 – 1907; 1913 – 1914; 1921 – 1924

Miscellaneous Sutton publications.

- Lawns, tennis & cricket grounds from seed 1892; 1896
- Sutton's Royal Seed Establishment at Reading, England n.d.
- The Suttons; Souvenir of a visit to the Royal Seed Establishment, Reading . n.d.
- Snapshots in a great business with notes of a visit to Suttons at Reading n.d.
- Potato demonstration held by invitation of Messrs. Sutton & Sons 1906
- My garden diary for 1904 - 1909

Bound in – *Nurserymen's Catalogues. Britain (9)*

- Sutton's bulbs for pots, glasses, beds and borders.....(?) 1903
- Notes on a visit to Sutton's Royal Seed Establishment at Reading..... n.d.

Bound in – *Nurserymen's Catalogues. Britain (13)*

- Album of Sutton's garden peas 1895

Bound in – *Sutton & Sons. Bulb Catalogues. 1887 - 1901*

- Sutton's bulb catalogue 1887; 1894; 1896 – 1901

Bound in – *Sutton & Sons. Amateur's Guide in Horticulture. 1892 – 1901*

• Sutton's amateur guide in horticulture 1892; 1895; 1899; 1900; 1901
 (Catalogues contain descriptive lists of fruit, flower and vegetable seeds, bulbs, implements and sundries.)

Bound in – *Sutton & Sons. Order Lists. 1897 – 1903*

- Order list for Sutton's bulbs, etc. 1897; 1900 - 1901
- Sutton's order list for vegetable & flower seeds, potatoes, bulbs, plants, etc.
 1897 – 1903

SYDENHAM, Robert, Ltd.,

Tenby Street, Birmingham.

- Mr. Robert Sydenham's unique bulb list 1907; 1908

- Unique list of the very best vegetable & flower seeds; a reliable guide to the best varieties 1909;1910;1916;1921.1922;1928

T

TELFORD, John & George

Nursery-men and Seeds-men, Tanner-Row, York.

Book Collection-Contained in - HARVEY, John., *Early Gardening Catalogues*. Chichester: Phillimore & Co. Ltd., 1972. (Facsimile, pages 83 – 89)

- A catalogue of forest-trees, fruit-trees, ever-green & flowering – shrubs ... 1775

THOMPSON & MORGAN

Haselmere Nurseries and Seed Establishment, Ipswich.

& 5, Carr Street, Ipswich.

- A catalogue of Dutch & home-grown bulbs, herbaceous & alpine plants, fruit trees, roses, etc. Aut/Spring 1905/06
- Herbaceous, alpine and other plants n.d.;1909-1910;1915
- Catalogue of choice flower & vegetable seeds ... 1904-05,1925;1931;1937;1953
- Catalogue of choice seeds 1909;1915

Bound in – *Nurserymen’s Catalogues. Britain (11)*

- Hardy herbaceous, alpine and other plants (including many rarities, and some not elsewhere obtainable)..... n.d; 1898

Bound in – *Nurserymen’s Catalogues. Britain (14)*

- A catalogue of bulbs and other flower roots 1899; 1902
- Bound in - *Thompson & Morgan. Seed Catalogues. 1895 – 1903*
- W. Thompson’s descriptive catalogue of flower seeds. 1895; 1897; 1898
 - Catalogue of flower and vegetable seeds 1899 – 1902

THOMPSON, William.

34 – 36, Tavern Street, Ipswich.

- Descriptive catalogue of a choice collection of flower seeds arranged alphabetically1881;1891;1893;1896

See also *Thompson & Morgan. Seed Catalogue. 1895 – 1903*. In 1899 W. Thompson went into partnership with John Morgan.

TURNER, Charles.

Royal Nurseries, Slough.

- Spring catalogue of plants(?)1881

Bound in – *Nurserymen’s Catalogues. Britain (12)*

- Catalogue of soft-wooded, stove and greenhouse plants 1893; 1899

VEITCH, James. & Sons., Ltd.

Coombe Wood Nursery, Kingston Hill, Surrey.

- Catalogue of hardy trees, shrubs, conifers, American plants, hardy bamboos, nymphaeas, etc n.d.
- Catalogue of nursery stock* 1913

* The stock was to be auctioned by Protheroe & Morris due to the expiration of the lease on Coombe Wood Nursery and the retirement of James Veitch.

Royal Exotic Nursery, 544, King's Road, Chelsea, London, S.W.

- Border carnation & picotees 1896;1901;1905
- Eremurus 1901
- Hardy nymphaeas Spring 1900; Spring 1906
- New chrysanthemums (Japanese) 1901;1902;1906
- New fruit 'The Mahdi' raspberry-blackberry hybrid 1901
- Novelties & specialities (hardy)...1902;1904;1905 (China);1906;1907;1908-09
- Untitled list of hardy perennials, herbaceous & florist' flowers.....n.d.

Bound in – *Nurserymen's Catalogues. Britain (9)*

- List of chrysanthemums1897; 1901 - 1903

Bound in – *Nurserymen's Catalogues. Britain (13)*

- Novelties and specialities in fruits and hardy shrubs..... 1898/99
- List of strawberries..... 1901
- Novelties and specialities 1901

Bound in – *Nurserymen's Catalogues. Britain (14)*

- Catalogue of roses n.d.
- Chrysanthemums: Novelties for 1899

Bound in - *James Veitch & Sons. Plant Catalogues. 1872 – 1899*

- Plant catalogue 1872-73
- List of select soft-wooded and bedding plants, etc. Spring 1882
- Catalogue of herbaceous plants and hardy florists' flowers..... 1895; 1896
- Catalogue of plants including novelties.....
..... 1881;1887;1892 – 1893; 1895 - 1897; 1899

Bound in – *Veitch & Sons. Plants, etc. 1907 – 1913*

- Various general plant catalogues. (covers removed by binder)..... 1907 – 1913

Bound in - *James Veitch & Sons. Seed Catalogues. 1880 – 1882; 1895 - 1903*

- Catalogue of garden & flower seeds, horticultural implements knives, etc.
..... 1880 – 1882; 1895 - 1903

Bound in – *Veitch & Sons. Seed Catalogues. 1905 – 1908; 1909 - 1913*

- Flower and vegetable seeds and garden implements (covers removed by binder)
..... 1905 – 1908; 1909 - 1913

Bound in – *James Veitch & Sons. Bulb Catalogues. 1882 – 1902*

- Catalogue of hyacinths & other bulbous roots..... 1882; 1884
- Catalogue of bulbs..... 1895;1896; 1898 – 1902

This bound volume holds inserts on the following

- Choice varieties of fruit..... 1894
- Chrysanthemums (Japanese)..... 1895

- Select Strawberries..... 1895
 - Eremurus 1900
 - Novelties & specialities: Stove & greenhouse plants 1900
- Bound in - ***Veitch & Sons, Bulb Catalogues. 1905 – 1913***
- Bulb catalogues (covers removed by binder)1905 - 1913
- Bound in – ***Veitch & Sons. Hardy Trees, Fruit trees, etc. 1882 – 1901***
- Hardy trees, shrubs, coniferae, American plants, etc, etc..... 1882/83; n.d.
 - A catalogue of fruits.....1896 – 1898; 1900/01
- Bound in – ***Veitch & Sons. Trees & Shrubs. 1902 – 1913***
- Trees, shrubs, fruit trees and roses (covers removed by binder)1902 - 1913
- (Nurseries also located at the Royal Exotic Nursery, Chelsea, London, S.W., Middle Green Farm, Slough, and Southfield, Fulham.)

VEITCH, Robert & Son

The Royal Nurseries, Exeter.

- Catalogue of alpine plants and hardy perennials n.d.
- Catalogue of herbaceous & rock plants n.d.

W

WALLACE, R. & Co.,

Kilnfield Gardens, Colchester.

- Bulbs & plants for Spring planting; many novelties & rarities 1899
 - Bulbs & plants for Spring planting 1904 – 1911; 1913
 - Catalogue of lilies, hardy plants and bulbs1898; 1903 – 1909; 1914 – 1917
 - Water lilies, aquatic & marsh plants, bamboos, etc. 1905 -1906
 - Plants for the water garden 1909; 1911
 - Catalogue of new Chinese plants, lilies, tulips, irises, etc. Aut. 1916
- (This includes a list of plants raised from seeds collected by George Forrest, during his 1912 - 1915 expedition)
- Irises and iris gardens 1914;1915;1918;1923;1924
 - Hardy plants & alpines 1910 – 1914
 - Hardy alpine and herbaceous plants including some new species from the Chinese alps raised from seed collected by George Forrest 1915
 - Hardy bulbs and tubers for Autumn planting 1910 – 1915
 - British grown bulbs 1918
 - The gladiolus; a descriptive list 1914
 - Daffodils; new and rare 1909
 - Shrubs & trees for rock and water gardens Spring 1914
 - Hardy flowering shrubs and dwarf conifers 1916
 - Special list of shrubs, etc. for the rock garden 1910

Bound in – **R. Wallace & Co. Plant & Bulb Catalogues. 1892 – 1903**

- Bulbs for Spring planting 1892; 1894 - 1898; 1900 - 1903
- Lilies, iris, calochorti, hardy bulbous and other plants
.....1894; 1895; 1897; 1899 – 1902
- Temple Show list of plants exhibited 1900

WALLACE, R. & Co., Ltd.

The Old Gardens, Tunbridge Wells.

- Bulbs and bedding plants for Autumn planting 1921
- Clearance list for Spring planting 1924 – 1925
- Wallace's bulbs 1923 - 1924; 1938
- A select list of roses for garden effect Autumn 1923

WALLIS, James.

Florist, Cradley, Near Stourbridge, Worcestershire. (Filed under Warner & Warner.)

- Auriculas, polyanthuses, carnations, picotees and pinks 1845

WARE, THOMAS. S., Ltd.

Hale Farm Nurseries, Tottenham, London.

- Catalogue of choice bulbs & plants 1898
- Bulbs and plants for autumn planting 1899; 1902
- Catalogue of dahlias, begonias, etc. 1898; 1899
- Catalogue of vegetable & flower seeds 1898; 1899
- Hardy perennials; illustrated Spring catalogue 1898
- Catalogue of hardy florists' flowers 1894; 1898
- Catalogue of begonias 1898
- Herbaceous & alpine plants, carnations, climbers, etc. 1899
- Thomas S Ware's catalogue of perennials n.d.

Bound in – **Nurserymen's Catalogues. Britain (12)**

- Catalogue of flower and vegetable seeds Spring 1892

Bound in - **Ware. Hardy Perennials, Bulbs, etc. 1878 – 1896**

- Illustrated catalogue of choice hardy perennials, including some now offered for the first time. Also collections of aquatics and bog plants, bamboos, and ornamental grasses. 1878; 1892; 1894
- Autumn bulb catalogue – miscellaneous bulbs/hardy perennials 1892
- Autumn bulb catalogue – lilies, iris and narcissus 1895; 1896

Bound in – **Ware. Bulbs & Plants. 1892 – 1902**

- Illustrated catalogue of begonias, lilies, gladiolus, etc. 1892; 1895
- Illustrated catalogue of chrysanthemums 1892
- Chrysanthemums, lilies, calochortus, begonias, gloxinias, gladiolus, etc.
..... 1895; 1897

- Bulb catalogue. Tulips hyacinths, crocus, lilies, narcissi, iris, etc..... 1897
- Bound in – **Ware. *Plant Catalogues. 1882 – 1897***
- Hardy florist’s flowers 1882; 1892; 1893; 1895; 1896; 1897
 - Catalogue of paeonies, primulas, hardy ferns..... 1892; 1893
 - Hardy & greenhouse climbing plants, single roses, rare fruits, culinary roots, etc. 1892
 - Carnations, and picotees, paeonies, pyrethrums phlox, pansies, pinks, hollyhocks, daisies, potentillas, etc.....1892; 1895; 1896; 1897
 - Roses, hardy and half hardy climbing plants, clematis, flowering shrubs, etc. 1893
 - New roses and clematis, hardy and half hardy climbing plants, fruit trees, shrubs, etc. Ghent and Indian azaleas, etc..... 1895
- Bound in – **Ware. *Dahlias, Begonias, Cannas, etc. 1882 – 1900***
- Catalogue of single dahlias, also double varieties, French marguerites, salvias, summer-flowering chrysanthemums, etc. 1882
 - New and other dahlias and begonias..... 1895; 1897
- Bound in – **Ware. *Seed Catalogues. 1895 – 1902***
- Flower and vegetable seeds1895; 1896; 1897;
 - Seed catalogue. Begonias, chrysanthemums, gladioli, etc. 1900
- Bound in – **Ware. *Hardy Perennials, etc. 1897 – 1903***
- Illustrated catalogue of choice hardy perennials 1897
- [On the death of Thomas Softly Ware, the business was transferred to Feltham, Middlesex and traded under the name of T. S. Ware, Ltd.]

WARE, THOMAS. S., (1902), Ltd.

Seed, Bulb & Nursery Establishment, Feltham, Middlesex.

- Hardy plants for herbaceous borders and rockeries.....n.d.;1908;1910;1914
 - Garden seeds for 1910 1910
- Bound in – ***Nurserymen’s Catalogues. Britain (12)***
- Tuberous begonias, lilies, gladioli, etc., select vegetable & choice flower seeds Spring 1903
- Bound in – **Ware. *Dahlias, Begonias, Cannas, etc. 1882 – 1900***
- Bedding plants, dahlias, begonias, cannas etc. 1903
 - Dahlias and begonias, etc..... 1900; 1901
- Bound in – **Ware. *Bulbs & Plants. 1892 – 1902***
- Bulbs and plants for Autumn planting 1900 -1902
- Bound in – **Ware. *Hardy Perennials, etc. 1897 – 03***
- Catalogue of new and rare hardy perennials and alpine plants, flowering shrubs, hardy climbers, hardy orchids, delphiniums, carnations, phloxes, aquatics, bamboos, etc..... n.d.
 - Catalogue of hardy plants etc..... 1900; 1901
 - Catalogue of hardy perennials, new and rare herbaceous and alpine plants, choice hybrid water lilies etc..... 1903

Bound in – *Ware. Seed Catalogues. 1895 – 1902*

- Seed catalogue. Begonias, chrysanthemums, gladioli, etc. 1901; 1902

Bound in – *Ware. Catalogues. 1904 – 1907; 1907 – 1910; 1910 - 1916*

- Various illustrated, general brochures.(Covers removed by binder) 1904 – 1916

WARGRAVE PLANT FARM *see Waterer, John & Sons., & Crisp. Ltd.*

WARNER and WARNER,

Seedsman and Florists, No 28, Cornhill, London.

- New and choice flower & vegetable seeds 1845

WATERER, Anthony.

Knap Hill Nursery, Woking, Surrey.

- Hardy trees, shrubs, conifers, rhododendrons & other American plants

.....n.d.; 1904-05; 1909-1912; 1915-15

Bound in – *Nurserymen's Catalogues. Britain (14)*

- Catalogue of hardy trees, shrubs, conifers, rhododendrons and other American plants 1903

(See also entry Knap Hill Nursery Bulletin)

WATERER, John. & Sons, Ltd.

The American Nursery, Bagshot, Surrey.

Bound in – *Nurserymen's catalogues. Britain (14)*

- Catalogue of American plants, etc. n.d.

Bound in – *Waterer. Catalogues. 1912 - 1923*

- Rhododendrons, hardy ornamental trees & shrubs, conifers, etc. (Untitled – covers removed by binder) n.d.

WATERER, John. & Sons, & CRISP, Ltd.

The Nurseries, Twyford, Berkshire.

- Hardy perennial & alpine plants Autumn/Spring 1924/25

The Floral Mile, Twyford, Berkshire.

- Seeds for the vegetable and flower garden & bulbs & roots 1932

Bound in – *Waterer. Catalogues. 1912 - 1923*

- General collection of alpine and herbaceous plants, aquatics, ferns, etc. (Untitled – covers removed by binders) n.d.
- Iris catalogue. n.d.
- Bulbs & roots n.d.
- Catalogue of fruit trees & roses n.d.
- Flower & vegetable seeds n.d.
- Roses n.d.

- Fruit trees n.d.
 - Hand picked seed potatoes, Scotch grown. n.d.
- (Amalgamated with Wargrave Plant Farm, Ltd.)

WELLS.

The Nurseries, Merstham, Surrey.

- Alpine & herbaceous plants1937-38
- Hardy plants1938-39

WELLS, W. – see The Earlswood Nurseries, Ltd.

WESTWELL, William & Sons.

Leigh, Lancashire.

- Dahlia novelties..... 1950

WHEATCROFT Bros. LTD.

Ruddington, Nottingham.

- The rose garden1937

WHEELWRIGHT, W.

Oldswinford, Stourbridge.

- List of auriculas1892

WILLIAMS, B.S.

Victoria and Paradise Nurseries, Upper Holloway, London. N.

Bound in - *Williams. Plant catalogues. 1878 – 97.*

- Catalogue of new & rare plants 1878
- Catalogue of orchids, ferns & palms, and general stove and greenhouse plants, roses, rhododendrons, pelargoniums, miscellaneous ornamental hardy plants, etc., etc. 1878
- Catalogue of new plants including miscellaneous new and rare plants, orchids, ferns, palms, and general stove and greenhouse plants, rhododendrons, pelargoniums, and other soft-wooded plants, miscellaneous ornamental hardy plants, horticultural sundries, etc. 1888; 1889
- Catalogue of new plants including miscellaneous new and rare plants, orchids, ferns, palms, and general stove and greenhouse plants, amaryllis, pitcher plants, rhododendrons, azaleas, camellias, clematis, cannas, bouvardias, carnations, vines, etc. 1894; 1897

Bound in – *Williams & Sons. Seed catalogues. 1878 – 97*

- Descriptive catalogue of flower, vegetable, agricultural seeds, etc. Horticultural implements, knives, etc.1878; 1895 - 897

WOOD, J.

Woodville, Kirstall, Leeds.

- A list of a few hardy herbaceous & alpine plants 1902
- Bound in – *Nurserymen’s Catalogues. Britain (11)*

- Supplementary list of plants..... 1894
- A short list of some hardy perennial rockwork and border plants..... 1901

Nurseries, Boston Spa, Yorkshire.

- Bulbs & plants for naturalising 1905
- Alpine plants n.d;1905;1906
- Alpine plants & hardy perennials No 90..... n.d.
- Hardy perennials old & new; Alpines & aquatics, etc.1905,1906
- Special offer of bulbs and plants 1905

Bound in – *Nurserymen’s Catalogues. Britain (14)*

- Hardy aquatic and bog plants..... n.d.
- Iris, narcissi, and bulbs and plants for naturalizing 1902
- Hardy perennial, alpine and rockwork plants* n.d.

(*Contains portrait of the late Mr. J. Wood)

Bound in – *Wood. Hardy Plants & Narcissi. 1900 – 03.*

- Choice narcissi or daffodils for sale n.d.
- Hardy plants, shrubs, and choice narcissi or daffodils for public sale..... n.d.
- Hardy perennial, alpine and rockwork plants 1900 – 03

The original nursery was Woodville, Kirstall.

WOOLMAN, H. Ltd.

Shirley, Birmingham.

- Begonias 1949
- Chrysanthemums 1948/49

Worth Park Nurseries

Gurteen & Ritson, Ltd., Balcombe Road, Horley, Surrey.

- Roses, fruit trees, shrubs, climbers & gen. nursery stock (wholesale) 1938/39

Y

YAMANAKA & Co.

London.

Bound in – *Nurserymen’s catalogues. Britain (10)*

- A catalogue of a collection of rare and beautiful Japanese floral and arboreal plants curiously and artistically trained (bonsai imports)..... 1900

NORTHERN IRELAND

DICKSON, Hugh.

Royal Nurseries, Belfast.

- Rose catalogue..... 1905 – 1910
 - Descriptive catalogue of fruit trees, coniferae, ornamental deciduous and evergreen trees & shrubs, hardy flowering plants, bamboos, climbers n.d.
 - Dickson's carnations 1907/08
 - Dahlias, bedding plants and summer flowering chrysanthemums n.d.
- Bound in Hugh Dickson – Trees & Shrubs – 1891 – 1903***
- Rose catalogue 1892, 1893; 1897 – 1902
 - Fruit trees, conifers, ornamental shrubs, forest trees, etc. n.d.
- (Nurseries at Belmont, Strandtown, Belfast.)

RODGER, M'CLELLAND & Co.

Nurserymen, etc., 76, Hill Street Newry

Bound in – *Nurserymen's catalogues. Britain (14)*

- Select list of spring flowering plants and bulbs, double primroses, choice pansies, etc., spring blooming shrubs, and selection of good perennials for autumn planting..... 1881/82
- General catalogue of conifers, weeping, standard and other ornamental trees for park, avenue and street planting: Evergreen, deciduous, & flowering shrubs, forest trees, etc, clematis, liliiums, and hardy ferns n.d.
- New and rare trees and shrubs, herbaceous and alpine plants, and list of tuberous-rooted begonias, fuchsias, geraniums, palms, and greenhouse plants n.d.

SMITH, T.

Daisy Hill Nursery, Newry.

- A.B.C. list of bulbous and tuberous rooted plants, etc. No.21, 1896
 - Hardy bulbsNo.87, 1913-1914; No.99, 1921 – 1922
 - Hardy alpine plants: Hardy herbaceous plants..... No. 98..n.d.
 - Hardy alpine and herbaceous plants: Hardy aquatics, ferns and grasses..... Nos. 105 (1924?); 135. n.d.
 - Home saved seeds of hardy perennials, brooms, whins, etc..... 1903 – 04; 1906-07; 1912; 1918; 1921
 - Seeds of hardy plants1924; 1925-26
 - Newry roses..... No.103, n.d.
 - Trees & shrubs, climbing plants, etc..... Nos. 101; 110, ..n.d
- Bound in – *Smith, T. Hardy Plants, Etc. – 1891 – 1901*

- Catalogue of hardy alpine, herbaceous, bulbous and border plants... No. 6. 1891
 - Supplemental list of hardy alpine, and herbaceous plants, and sterling list of special novelties No. 13 1894
 - Hardy plants No. 23 1894
 - Alpine plants, herbaceous plants, hardy grasses, hardy ferns..... No. 41 1900
 - Supplemental list of alpine and perennial plants, trees and shrubs. . No. 47 1901
- Bound in – **Smith, T., *Plant Catalogues. 1895 – 1903***
- Retail catalogue of aquatic, water-side, and other bog-loving plants. No. 16 1895-1896
 - Retail catalogue of border carnations, picotees, pinks, pansies, violas, primroses, polyanthus, and pyrethrums. No. 22 1896-1897
 - China roses, Japanese roses, fruiting roses, wild roses, old garden roses, briar roses, climbing roses, roses which grow into trees..... Nos. 32 1898-1899; 39 1900; 44 1900-01; 51 1901 - 02
 - Retail catalogue of border carnations, pinks, early flowering chrysanthemums, delphiniums, lobelias, phloxes, pansies, violas, oriental poppies, potentillas, primroses, polyanthus, auriculas, pyrethrums, & sweet violets..... Nos. 31 1898-9; 38 1899-1900; 50 1901 -02; 55 1902 - 03
 - Preliminary list of anemones, chionodoxas, colchicums, crocus (species), cyclamens, eranthus, erythroniums, frittilarias, galanthus, iris, leucojums, puschkinias, scillas, sternbergias. Nos. 36 1899; 43 1900 48 1901; 52 1902; 57 1903
- Bound in – **Smith, T., *Bulbs & Tubers, 1897 – 1902.***
- A.B.C. List of bulbous and tuberous rooted plants, etc., etc. Nos. 26 1897; 30 1898; 37 1899; 49 1901; 53 1902
 - Home saved seeds of hardy bulbous plants for present sowing; many of which are suitable for sowing in grass for naturalizing purposes n.d.
- Bound in – **Smith, T., *Trees, Shrubs & Hardy Plants, 1898 – 1902.***
- Trees, shrubs & hardy plants No. 29, 1898
 - Home saved seeds of hardy perennials, brooms, whins, etc..... 1899; 1900; 1902
 - Trees & shrubs No. 33, 1899
 - Trees & shrubs & climbing plants No. 54, 1902
- Bound in – **Smith, T., *Bulbs & Tubers, 1903 – 1909***
- Various bound catalogues – outer covers removed by binder 1903 – 1909
- Bound in – **Smith, T., *Hardy Plants, etc., 1904 – 1911***
- Various bound catalogues – outer covers removed by binder 1904 – 1911
- Bound in – **Smith, T., *Trees & Shrubs, 1904 – 1911***
- Various bound catalogues – outer covers removed by binder 1904 – 1911

REPUBLIC OF IRELAND

GORE-BOOTH, Sir Josslyn, A.R. see Lissadell Nursery.

HARTLANDS, William. Baylor.

24, Patrick Street, Cork.

Bound in – *Nurserymen's catalogues. Britain (3)*

- 'Original' little book of daffodils, oxlips, cowslips, hellebores & primroses 1888

Bound in – *Nurserymen's catalogues Britain (6)*

- Daffodils and rare tulips.....Aut/Spring 1898/99; 1901/02
(Bulb grounds at Ard-Cairn, Ballintemple. Seed & bulb store at Bowling Green Street, Cork)

HOGG & ROBERTSON

Royal Seedsmen and Bulb Growers, 22, Mary Street, Dublin.

- Robertson's Irish grown daffodils and tulips 1899; 1907;1909;1911;1913
- Robertson's new hybrid gladioli n.d.

Bound in – *Nurserymen's catalogues Britain (6)*

- Robertson's Irish grown daffodils and tulips..... 1899

LISSADELL

Lissadell, Sligo, Ireland.

- Price list of daffodils and narcissi 1907; 1909 -1911; 1913
- Price list of alpine and herbaceous plants for rock gardens, borders and general permanent out-door gardening1907; 1919 – 1914; 1920
- Price list of alpine and herbaceous plants and ferns, fruit, roses, forest trees, conifers, shrubs and climbers 1931/32
- List of Fruit trees, forest trees, ornamental shrubs & roses ... Aut.1928/Spr.1929
- Price list of seeds1910 – 1923; 1920; Aut.1931

PENNICK Co.

Delgany Nurseries, Nr. Dublin.

- Catalogue of hardy flowering shrubs, forest, fruit trees, alpine and herbaceous plants n.d.
- Catalogue of proven hardy flowering shrubs & roses, fruit and forest trees .n.d.

(The nursery was established prior to 1880 and closed in 1927)

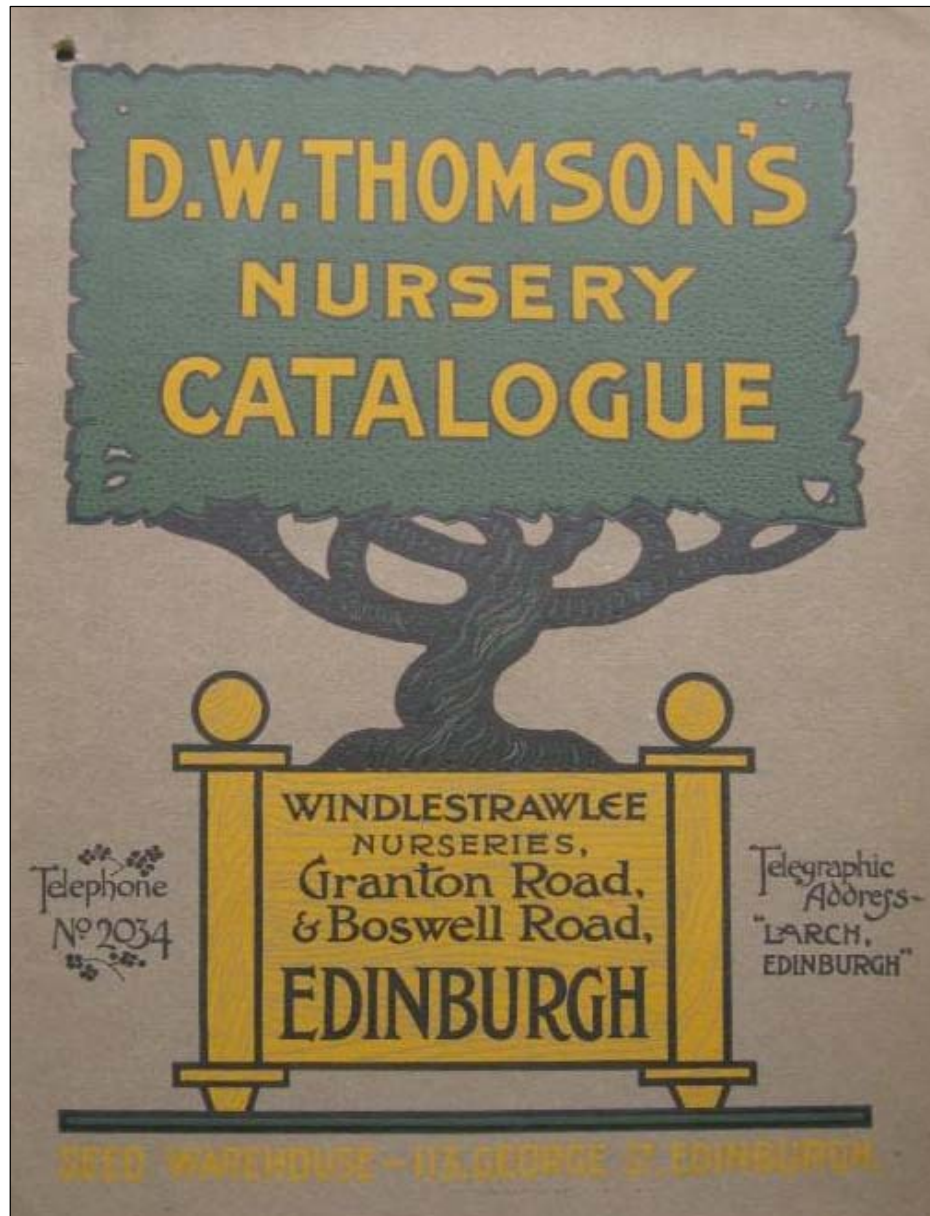
ROBERTSON see HOGG & ROBERTSON

WATSON, Wm. & Sons

Killiney, Co. Dublin.

- Fruit trees, shrubs and roses 1941/42

SCOTLAND



D. W. Thomson's nursery catalogue n.d.

SCOTLAND

A

ANDERSON, Leslie, and Co., Seedsmen,

At their SHOP, Firft Fore-Stair below the Royal Exchange, Edinburgh.-

Book collection – Bound with - ARCHIBALD, Joseph., *The botanist's and nurseryman's companion*. Containing the species and varieties of most trees, shrubs, flowers, fruits and herbs, native and exotic presently cultivated in Britain. Edinburgh: 1781

- Catalogue of forest and fruit trees, tree and garden seeds, garden tools, etc. etc.
..... 1787 & 1788

Nursery located at Broughton Park, North side of the city.

ANDERSON, Robert.

Seedsmen and Nurseryman,

At his shop, at the sign of the Gilded Gardener, By the Cross, Northside, Edinburgh.

Book collection - Harvey, John., *Early horticultural catalogues*, (Bath, University of Bath, 1973) According to an entry in this book, Anderson was resident at the above address circa 1775.]

- Catalogue of garden, grass, foreign and native forest-trees, and flower seeds: also nurseries of all kinds of foreign and native forest-trees, fruit-trees, shrubs, evergreens, hot-house and green house plants, with thorns, colliflower and broccoli, asparagus, liquorice, and cabbage plants, for the garden or field, and garden utensils of all sorts: (Edinburgh, R. Fleming and A. Neill,n.d)

ARCHIBALD, Joseph.

Seedsmen and Florist, No. 88, Chapel Street, Edinburgh.

Book collection - Contained in:- ARCHIBALD, Joseph., *The botanist's and nurseryman's companion*. Containing the species and varieties of most trees, shrubs, flowers, fruits and herbs, native and exotic presently cultivated in Britain. Edinburgh: 1781.

- The botanist's and nurseryman's companion containing the species and varieties of most trees, shrubs, flowers, fruits, and herbs, native and exotic presently cultivated in Britain. Also garden and flower seeds; with their generic, specific, and English names, arranged alphabetically..... 1781

B

BARR & Son

66-68, Buccleuch Street, Dumfries. & Bakerland Nurseries, Dumfries.

- Forest trees, ornamental, trees & shrubs, climbing plants, etc. (trade list) ...1937

BEECHILL NURSERY, Murrayfield, Edinburgh *see* **DOWNIE, John**

BROUGHTON PARK NURSERY, Edinburgh, *see* **DICKSONS & SHADE**.

BUCCLEUCH NURSERIES, HAWICK *see* **FORBES, John**.

BURNSIDE NURSERIES, ABERDEEN *see* **SMITH, W.**

C

CADELL, A. & M.

The Dean Gardens, Longniddry, East Lothian.

- Primroses in excelsis: The old-fashioned double and other primroses n.d.
- Primroses: The old-fashioned double and other primroses n.d.

CAMPBELL, Alexander. E.

Seedsman and Florist, Cove Gardens, Gourrock.

Bound in – *Nurserymen's catalogues Britain (5)*

- Descriptive catalogue of choice hybrid gladioli season 1891-92; 1893-94

CAMPBELL, Matthew.

Auchinraith Nurseries, High Blantyre.

Bound in – *Nurserymen's catalogues. Britain (1)*

- Priced list of carnations, picotees, and pinks for Autumn 1893

Bound in – *Nurserymen's catalogues. Britain (4)*

- Catalogue of new and select florist flowers 1894; 1895
- List of carnations, picotees, tree carnations and pinks 1899;1900

Bound in – *Nurserymen's catalogues Britain (5)*

- Catalogue of new and select florist flowers and general nursery stock 1900

CHALMERS, W.

Blackbutts, Stonehaven, Kincardineshire.

- Catalogue of the best violas, pansies & chrysanthemums Spring. 1931;1932

CHAPMAN, M.

Torbrier Nurseries, St. Ninians, Stirling.

- Chapman's hardy plant catalogue. n.d.

CARDNO & DARLING,

Seedsman, Nurserymen and Florists, 11, Bridge Street, Aberdeen.

Bound in – *Nurserymen's catalogues Britain (2)*

- Catalogue of nursery stockSeason 1888 – 1889

COCKER, James & Sons.

Rose Specialists & General Horticulturists,

Morningfield Nursery, Aberdeen.

Sunnypark Nursery, Aberdeen.

- Hardy herbaceous and alpine plants (pre. 1908) n.d.
- Roses, hardy herbaceous plants, trees, shrubs, climbing plants, etc.
..... 1901;1907

Bound in *Cocker and Sons, Seed & Plant Catalogues 1890 - 1899*

- Descriptive catalogue of perennials, herbaceous, alpine, bulbous, tuberous-rooted plants 1890 – 91; 1894
- Descriptive catalogue of vegetable & flower seeds, florists' flowers, bedding plants, etc. Spring 1894; 1896
- Catalogue of Dutch flower roots 1897; 1898; 1899
- Catalogue of seeds and plants 1898; 1899

Bound in *Cocker and Sons, Roses, etc. 1890 – 1901*

- Descriptive catalogue of select roses, forest & ornamental trees, shrubs, fruit trees, etc.1890 – 1901

Bound in – *Nurserymen's Catalogues Britain (2)*

- Descriptive catalogue in three parts, pt.1, Roses; pt.2, hardy herbaceous plants; pt. 3, shrubs, fruit trees, bushes, climbing plants, etc. Aut/Spr.1901-02;1902-03

Muirfield & Willowpark Nursery, Mid Stocket Road, Aberdeen.

- Choice chrysanthemums and bedding plants Spring 1951

CRAIGLEITH NURSERY, Edinburgh see IRELAND & THOMSON

CROLL, D. & W.

Dalhousie Nurseries, Broughty Ferry.

63, Commercial Street, Dundee.

Bound in *Croll, Rose Catalogues 1892 – 1900*

- List of Roses 1892; 1893; 1896-97; 1899-1900

CUTHBERTSON, M.

Public Park Nursery, Rothesay.

- Flower & vegetable seeds, herbaceous plants, roses, pansies, violas, etc. ... 1899
- Seed & plant catalogue & cultural guide 1906

Bound in *Cuthbertson Seed & Plant Catalogues 1893 – 1901*

- Annual catalogue 1893; 1894;1895;1896;1897*; 1899; 1900; 1901

- Autumn catalogue 1893; 1896; 1899
(*includes portrait of Michael Cuthbertson)

CUNNINGHAM, FRASER., & Co.

Comely Bank Nurseries, Edinburgh.

Bound in – *Nurserymen’s Catalogues Britain (7)*

- Herbaceous alpine and rock plants n.d.

D

DAWYCK NURSERY,

Dawyck.

Bound – *book collection*

- Plants sold through Landowners’ Co-operative Forestry Society, Ltd., and others, from the Nurseries at Dawyck 1914 - 1925

DICKSONS & Co.

1 Waterloo Place, Edinburgh.

- Nursery stock catalogue (forest & ornamental trees & rhododendrons) n.d.

Bound in – *Nurserymen’s catalogues Britain (7)*

- Catalogue of forest & ornamental trees & shrubs, coniferae, rhododendrons, etc. n.d.; 1895 – 96
- List of select florists’ flowers and border plants..... n.d.

Book collection

- A catalogue of fruit and forest trees, flowering American, and evergreen shrubs, herbaceous plants, bulbous flower roots, etc,seeds, garden utensils, etc. (Edinburgh: P. Neill 1827)..... 1827

Book collection – bound with - ARCHIBALD, Joseph., *The botanist’s and nurseryman’s companion*. Containing the species and varieties of most trees, shrubs, flowers, fruits and herbs, native and exotic presently cultivated in Britain. Edinburgh: 1781.

- A catalogue of fruit and forest trees, flowering and evergreen shrubs, greenhouse, and herbaceous plants circa 1807

Nurseries at:- Pilrig Park, Pilrig Street (opposite Rosebank Cemetery) and Redbraes, Logie Green, Bonnington Farm.

DICKSON, BROWN & TAIT

North England

Bound in – *Nurserymen’s catalogues Britain (7)*

- Bulb catalogue..... 1881

DICKSON & TURNBULL

Perth

We do not hold any catalogues for this firm but there is an article listing some plants and trees of note in *The Garden*, Vol. 5, 1874. Page 164; McNab, James.
 Arbicultural notes from Perth. 1874

DICKSON, James & George,

Sons of the late James Dickson,

Nursery, Seedsmen and florists, No. 4, St. Andrew Street, Edinburgh

Book collection - Contained in:- ARCHIBALD, Joseph., The botanist's and nurseryman's companion. Containing the species and varieties of most trees, shrubs, flowers, fruits and herbs, native and exotic presently cultivated in Britain. Edinburgh: 1781.

- A catalogue of forest and fruit trees 1806
 [Nursery at Broughton Park, Edinburgh]

DICKSONS and SHADE

Nursery, Seedsmen, and florists,

At the Beehive, Near the Cross, Edinburgh.

(Widow, son and son-in-law of the late James Dickson)

Book collection - Contained in:- ARCHIBALD, Joseph., The botanist's and nurseryman's companion. Containing the species and varieties of most trees, shrubs, flowers, fruits and herbs, native and exotic presently cultivated in Britain. Edinburgh: 1781

- A catalogue of forest and fruit trees 1802
 Nursery located at – Broughton-Park, Edinburgh.

DOBBIE & Co. Ltd.

Seed Grower, Seed Merchants & Florists, Rothesay.

The Royal Scottish Seed Establishment, Edinburgh.

- Catalogue of seeds and plants for Spring1920;1921;1923;1924
- Bulbs, roses and sweetpeasAutumn 1922;1923
- Hardy Scotch grown roses1922
- Catalogue of plants for Spring 1922
- Roses, carnations, pansies, violas, allwoodii pinks, etc. (abr.) 1923

Bound in *Catalogue & Competitors Guide, Dobbie & Co.* [3 volumes]

- Catalogue and Competitors Guide,1892-1894; 1896-1898; 1909-1916

Bound in – *Nurserymen's Catalogues Britain (7)*

- Catalogue of hyacinths, tulips, narcissi, and other bulbs for autumn planting 1894;1895
- ChrysanthemumsAutumn 1899

Bound in *Catalogues, Dobbie & Co. 1912 - 1919*

- Autumn catalogue1912; 1913; 1914; 1915; 1916; 1918; 1919
- Annual catalogue..... 1917; 1918; 1919

DOWNIE, John.

Seed, Plant & Bulb Merchant, 144, Princes Street, Edinburgh.

Bound in – *Nurserymen's Catalogues Britain (3)*

- Catalogue of stove and greenhouse plants circa. 1898

DRUMMOND BROTHERS

4, India Buildings, Victoria Street, Edinburgh.

Bound in – *Nurserymen's Catalogues Britain (7)*

- Catalogue of vegetable and flower seeds 1900

E

EDROM NURSERIES,

Coldingham, Eyemouth, Berwickshire, TS14 5TZ

- Catalogue of plants..... Autumn. 2008/Summer 2009

F

FERGUSON, W. & R.

Rose Growers, etc., Brucefield Feus, Dunfermline.

Bound in – *Nurserymen's Catalogues Britain (4)*

- List of selected roses with directions for culture . Aut/Spr. 1899-1900; 1901-02

FORBES, John.

Nurseryman, Seedsman Florist, Buccleuch Nurseries, Hawick, & Royal Nurseries, Hawick.

- Descriptive catalogue of garden & flower seeds 1885 – 1888
- Descriptive catalogue of garden seeds & garden sundries Spring 1889
- Catalogue of trees & shrubs, roses strawberries, etc. 1887
- Catalogue of vegetable & flower seeds..... Spring 1890-1894;1896; 1901-1907
- Catalogue of florist's flowers & hardy border plants 1890-1906
- Seed catalogue 1908-1911
- Plant catalogue 1907-1911
- Plant & seed catalogue 1912-1922
- Forbes catalogue 1923-1931
- Forbes catalogue; British grown plants 1932-1939;1945;1947-1948;1950-1958
- Forbes British grown plants and seeds for vegetable & flower garden..... 1959
- Forbes dependable plants & seeds for vegetable & flower garden.....
..... 1960-1962;1964
- Forbes dependable plants for the flower garden 1968

Bound in *Forbes Flower Catalogues 1894 – 1899*

- Catalogue of florist's flowers and hardy border plants ..1894; 1895; 1898; 1899
Bound in *Forbes Flower catalogues 1900 – 1903*

- Catalogue of florist's flowers and hardy border plants .1900*; 1901; 1902;1903

*Contains portrait of John Forbes

Bound in – *Nurserymen's Catalogues Britain (4)*

- Catalogue of trees, shrubs, roses, strawberries, etc.....(circa 1888) n.d.

- Catalogue of trees, shrubs, fruit trees, strawberries, etc. n.d

(Both contain a descriptive list of dessert and kitchen apples and other fruits)

Bound in – *Nurserymen's Catalogues Britain (7)*

- Catalogue of vegetable and flower seeds 1902; 1903

G

GLASS, J. & A.

Newington Gardens, Edinburgh.

Bound in – *Nurserymen's catalogues Britain (7)*

- Select list of alpine and herbaceous plants n.d.

GRIEVE, James & Sons.

Nurserymen, Seedsmen and Florists, Redbraes Nursery, Edinburgh.

- Catalogue of specialities in carnations, early-flowering chrysanthemums, dahlias, pansies, violas, bedding plants, etc..... 1912

HALL, Charles,

No address given

(Late Gardener and Nurserymen to the Hon. Family of Cromarty)

Book collection - Contained in:- A concise treatise on the most effectual method of destroying heath, and turning the soil into good pasture; with an infallible mode of covering rocks, barren hills, etc. with verdure; also, a new mode of turning waste and marshy land into good pasture; likewise, a new method of improving moss, etc. together with valuable receipts, for destroying vermin, on bushes, hedges, trees, etc. (Edinburgh, Oliver & Co., 1802

- Catalogue of flower and flower-roots, that gentlemen can be supplied with, by sending their orders to the author 1802

I

IRELAND & THOMSON

81, Princes Street, Edinburgh.

Bound in – *Nurserymen's Catalogues Britain (8)*

- Catalogue of selected vegetable and flower seeds, gladioli, etc..... 1892

(Nurseries at – Craigleith Nursery, Comely bank; Royal Exotic Nursery, Lynedoch Place; Windlestrawlee & New Golden Acre Nurseries, Granton Road.)

IRVINE, Andrew

Kyles of Bute Nursery, Tighnabruaich.

Bound in – *Nurserymen's Catalogues Britain (6)*

- Descriptive catalogue of pansies, violas, carnations, picotees, pinks, dahlias, phloxes, roses, herbaceous plants, etc..... 1892

IRVINE, Charles

Nurseryman, Seedsman and Florist, Jedburgh.

Bound in – *Nurserymen's Catalogues Britain (6)*

- Catalogue of select florists' flowers 1896

L

LAING & MATHER

Seed Merchants and Nurserymen, Kelso-on-Tweed.

- Carnations and their culture(circa 1894) n.d.

Bound in – *Nurserymen's Catalogues Britain (5)*

- Carnations(circa 1900) n.d.

LAIRD, R. B. & Sons

Seed Warehouse, 17, South Frederick Street, Edinburgh.

Bound in – *Nurserymen's Catalogues Britain (8)*

- Catalogue of florists' flowers n.d.
- Trees and shrubs for flower and foliage (circa 1901) n.d.
- Trees and shrubs and fruit trees n.d.
- Descriptive catalogue of kitchen garden and flower seeds, implements, etc. Spring 1891
- Select bulbs 1897
- Stove and green house plants n .d.
- Illustrated descriptive catalogue of herbaceous and alpine plants n.d.

(Nurseries – Royal Winter Garden, Haymarket; Meadow Park, Pinkhill and Beechwood Mains, Murrayfield)

LAIRD & DICKSON,

Pinkhill Nurseries, Murrayfield, Edinburgh.

- Choice plants for the rock garden 1937/38

LANDOWNERS' CO-OPERATIVE FORESTRY SOCIETY, Ltd.

See – Dawyck Nurseries

LAWSON, Peter & Son

The Queen's Seedsmen, 1, George IV. Bridge, Edinburgh.

Reprint Section (filed under Peter)

- Agricultural seeds, No. 1February, 1870
Nursery at Golden Acre, Inverleith Row, Edinburgh.
The Lawson Nurseries, Edinburgh are described and illustrated in *The Garden an illustrated weekly journal*, Vol. 5, Jan-June, 1874 pages 120 – 122.
London address –20, Budge Row, Cannon Street, London, EC

LOCHINCH,

Castle Kennedy, Stranraer, Wigtonshire.

- List of surplus plants (Mostly rhododendrons collected by G. Forrest, F. Kingdon Ward and J. Rock – grown from seed) 1932

M

MEADOW PARK NURSERY, EDINBURGH *see LAIRD, R.B. & Sons.*

MENZIES, John.

Bankhead, Dunse, North Berwickshire.

- Catalogue of auriculas 1882
- Catalogue of stage and alpine auriculas 1885; 1893; 1895

METHVEN, Thomas & Sons

15 Princes Street, Edinburgh.

Bound in – *Nurserymen's catalogues Britain (11)*

- Catalogue of seedling and transplanted forest trees, rhododendrons, coniferae, ornamental trees, shrubs, fruit trees, etc..... 1884

Bound in – *Nurserymen's Catalogues Britain (12)*

- Catalogue of garden flower and agricultural seeds, gladiolus, implements, etc. 1887; 1888
- Hyacinths, narcissi, tulips and other spring flowering roots 1891
- Catalogue of seedling & transplanted forest trees, ornamental trees, shrubs, coniferae, rhododendrons, fruit trees etc..... 1894-1895
- Bulb list 1901

Bound in – *Nurserymen's Catalogues Britain (13)*

- Seed list 1897

(Nurseries – Leith Walk, Warriston and Inverleith. Seed warehouse – Nursery Gate, Leith Walk)

N

NEW GOLDEN ACRE NURSERY, Edinburgh. *see* **IRELAND & THOSMON**

O

OLIVER & HUNTER,

Nurserymen & Seedsmen, Moniaive, Dumfries.

- Montbretias 1938
- Hardy heaths 1943

ORMISTON & RENWICK

Nurserymen and Seed merchants, Melrose, Roxburghshire.

Bound in – *Nurserymen’s Catalogues. Britain (11)*

- General catalogue of forest and ornamental trees, hardy coniferae, evergreen and flowering shrubs, roses, fruit trees, etc..... 1881/82
(Nurseries located at;- Shortacres, the Tub, Eildon Grove and Abbey Street Garden)

P

PILRIG PARK NURSERY, Edinburgh. *see* **DICKSONS & Co.**

PINEWOOD Park Nursery, Aberdeen *see* **Reid, Benjamin & Co.**

POYNTZFIELD HERB NURSERY

Black Isle, By Dingwall, IV7 8LX

Book collection – Contained in - ROSS, Duncan., Poyntzfield Herb Nursery: Herbal plants and seeds including native species since 1976. Black Isle, 2006]

- Culinary, aromatic & medicinal plants and seeds..... 2006
(Includes a list of native species)

R

REDBRAES Nursery, Edinburgh. *see* **GRIEVE, James & Sons.**

REID. Benjamin & Co.

Seed Merchants, & Nurserymen, 72 Guild Street, Aberdeen.

- Catalogue of forest trees, conifers, shrubs, etc..... 1886/87
- Catalogue of flower roots, forcing plants, etc..... 1910; 1912
- Catalogue of forest trees, roses, etc..... 1905
- Catalogue of forest trees, conifers, roses, etc..... n.d.;1908-1913;1915-1917
- Catalogue of garden seeds, plants, etc. 1912 – 1916

- Special offer of selected tree seeds and forest trees 1908-1910; 1918-1919
- Special offer of fruit trees & bushes, roses, herbaceous plants & novelties 1914
- Hardy Scotch grown trees. Special Autumn offer of seedling and transplanted forest trees 1914 -1915
- Supplementary list of specialities and noveltiesn.d.; 1905/06

ROSEMOUNT NURSERY, Edinburgh. see DOWNIE, John.

ROYAL EXOTIC NURSERY, Edinburgh. see IRELAND & THOMSON

ROYAL NURSERIES, Hawick see FORBES, John.

ROYAL WINTER GARDEN NURSERY, Edinburgh. see LAIRD, R.B. & Sons.

RYE, R.W. see Lochinch.

S

SCOTTISH HORTICULTURAL ASSOCIATION

Bound in – *Periodical collection* Contained in:- Transactions of the Scottish Horticultural Association. 1889 - 1915

- Chrysanthemum exhibition 1889 – 1915
(Various nursery catalogues containing a wide variety of plants, trees and garden ware.)

SMELLIE, John

Meadow Nursery, Busby, Nr. Glasgow

Bound in – *Nurserymen's Catalogues Britain (9)*

- Descriptive catalogue of pansies, dahlias, violas, etc. 1893

SMITH & SIMONS,

Seed merchants & Nurserymen, 36 – 38, West George Street, Glasgow

- French & Dutch flowering roots, plants & sundries 1908
- Garden seeds 1908 – 1910
- Bulb & nursery catalogue 1908 - 1910

SMITH, Thomas & Sons,

Nurserymen, Seedsmen and Florists, Stranraer, Wigtonshire.

- Catalogue of forest trees, coniferae, rhododendrons, ornamental trees and shrubs, climbers, fruit trees, etc. 1911;1915;1921-22;1924-25
- Descriptive rose catalogue 1900; 1909-1911; 1913-1918; 1920-1925

Bound in *Rose Catalogues, T. Smith & Sons, 1893 – 1902*

- Descriptive rose catalogue1893; 1895; 1897; 1900 – 1902

Bound in – *Nurserymen's Catalogues Britain (11)*

- Catalogue of forest trees, coniferae, rhododendrons, ornamental trees and shrubs, climbers, fruit trees, etc. n.d.

SMITH, William & Son,

Nurserymen, Seedsmen and Florists, Burnside Nurseries, Westburn Road, Aberdeen.

- Descriptive catalogue of seeding and transplanted forest trees, ornamental trees, shrubs, coniferae, fruit trees, roses, etc. season 1911 - 1912
- Forest trees, ornamental trees, shrubs, coniferae, fruit trees, roses, etc.....
.....1914 – 1917; 1919-1920

SPRINGHILL NURSERIES, LTD.,

Mid Stocket Road, Aberdeen.

- Chrysanthemums, dahlias, annuals, fruit, shrubs, roses & herbaceous 1948

Lang Stracht, Aberdeen.

- Catalogue of nursery stock 1976/77

STEEL, Wm. J.

Meadow Nurseries, Busby, Nr. Glasgow.

- Dahlias, chrysanthemums, sweet peas, etc. 1956

STEWART & Co., Ltd.,

Seedsmen, 13 South St. Andrew Street, Edinburgh, 2.

- Garden seeds, potatoes, plants, etc. for allotment and small holders 1922
- 'Stronghold' seeds 1935; 1940; 1942; 1947-48; 1950 – 1962
- 'Stronghold' farm seeds 1925; 1929; 1931 – 1933
- 'Stronghold' vegetable seeds for the market grower 1949 – 1952
- 'Stronghold' seeds for the market grower 1954; 1959; 1960; 1964
- 'Stronghold' seeds: Pocket edition 1948
- Bulb catalogue 1924
- Bulbs & flower roots, etc. 1927-28; 1930-31; 1933
- Bulbs, flower roots, roses, etc. 1934 - 1935; 1938 - 1940
- The charm of bulbs 1946; 1948 – 1952
- Bulbs, fruit trees, roses, shrubs, etc. 1953 – 1968
- Catalogue of select roses 1924/25
- Roses and fruit trees 1933/34
- Fruit trees and bush fruits 1949 – 1951

STORRIE & STORRIE

Seed Merchants, Florists & Nurserymen, 22 & 24, Seagate, Dundee.

Bound in – *Nurserymen's Catalogues. Britain (12)*

- 'Seeds', Storrie's selections 1903
- Nurseries: Glencarse, Carse of Gowrie, Perthshire.

T

THOMSON, David. W.

113, George Street, Edinburgh.

- Nursery catalogue n.d.
- Seed list 1905 – 1910; 1915
- Bulb list 1905; 1907 – 1908; 1911 - 1912

THOMSON, William & Co.

Seed Merchants & Nurserymen, 3, Melbourne Place, Edinburgh.

- Catalogue of flower roots.....Autumn.1914 – 1915; 1919 – 1921
- Catalogue of imported flower roots 1908 – 1913
- Catalogue of vegetable & flower seed, flower roots, implements, insecticides and manuresSpring 1906;1908 – 1910;1912;1914 – 1915;1917 – 1923
- Bulbs 1922 – 1923

W

WINDLESTRAWLEE NURSERY, Edinburgh. *see* **THOMSON, D.W.**

WISEMAN, Edward.

Horticultural Establishment, Elgin.

- Tree seed circular 1898 – 1899
- Seed and nursery catalogues1905 – 1912; 1920 – 1923; 1926
- Wiseman's famous trees & plants Aut/Spring 1906 – 1915

WRIGHT, William.

Nurserymen, Bottom of Leith Walk.

Bound – *book collection*

Catalogue of hardy American and European fruit and forest trees also flowering shrubs, and evergreens, with garden, grass, tree, and flower seeds.1777
(William's brother, John Wright went to Canada to collect tree seeds which he brought back to Edinburgh to be sold at the nursery.)

FURTHER READING

Grieve, James., Paper on Scottish florists. *Transactions Scottish Horticultural Association*, 1905 pp.49-54

Gunther, Robert, T., The garden of the Rev. Walter Stonehouse ... at Darfield Rectory in Yorkshire, 1640 – 44. (*Reprint collection*). This gives a list of plants and the garden plan. It also includes fruit trees, etc.

Taylor, Judith. M., The global migrations of ornamental plants: How the world got into your garden.: Missouri Botanical Garden Press., St. Louis. 2009

,
HARVEY, John., Early Gardening Catalogues. Chichester: Phillimore & Co. Ltd., 1972.

JACKSON, Graham., Garden plants of Leicestershire and Rutland. Wisley: National Council for the Conservation of Plants & Gardens. 1999.

WHAT WAS GROWING IN OUR GARDENS?

Bound - *Book collection*

RIVERS, T. Jnr., The rose amateur's guide. In two parts. Part 1. The summer rose garden. Part two. The autumnal rose garden., 2nd edition., London: Longman, Orme, Brown, Green & Longmans. 1840.

This publication provides a list of roses available in 1840 and a list of show and prize roses for the same year.

Bound - *Book collection*

SABINE, Joseph., Description and account of the varieties of double Scotch roses cultivated in the gardens of England; On the Ayrshire rose; Account of Rosa Banksiae [and other notes on Rosa from the same vol.] : reprinted from *Transactions of the Horticultural Society*, vol. 4, 1822, pages 281 – 305, 456 – 467, etc.

QUICK GUIDE TO UK AND ROI NURSERIES

COUNTRY	Region/Town	General catalogue	Illustrations	Seeds	Trees & Shrubs	Bulbs	Agriculture	Vegetables	Fruit	Orchids	Aquatic & Bog	Alpines	Roses	Ferns	Dates Covered	Notes
CHANNEL ISLANDS																
Mauger, W. & Sons.	Guernsey		*			*									1938	
Smith C. & Son	Guernsey	*													1902	
ENGLAND																
A																
Aldenham House Gardens	Elstree	*			*						*	*			1925 - 1927	
Allington Nurseries	Kent															see Geo. Bunyard & Co.
Allwood Brothers	Sussex		*												n.d. 1939	carnations, dianthus
Anderson, J. Farnworth. (Rev.)	Leicester			*		*						*			n.d.	
Auction Room Sales	London									*					1895 - 1916	see Protheroe & Morris, Auctioneers.
B																
Backhouse, James. & Son. Ltd.	York	*	*	*	*	*		*	*		*	*		*	1851 - 1916	
Barnham Nurseries, Ltd.	Sussex												*		1940 - 1941	
Barr & Sons	London	*	*	*	*	*		*			*	*		*	1884 - 1930	gardening requisites and gardening books
Barr & Sugden	London	*	*	*			*	*	*						1862 - 1881	continued trading as Barr & Sons

COUNTRY	Region/Town	General catalogue	Illustrations	Seeds	Trees & Shrubs	Bulbs	Agriculture	Vegetables	Fruit	Orchids	Aquatic & Bog	Alpines	Roses	Ferns	Dates Covered	Notes
Barron, William. & Son	Nr. Derby	*	*		*				*			*	*		1882 - 1898	W. Barron's tree transplanting machine - invented 1831.
Bees	Liverpool	*	*	*	*	*		*	*			*	*		1905 - 1918 undated catalogues	1912 catalogue includes photographs of George Forest in China. Kingdon Ward plant introductions.
Benton, H. & Co.	Birmingham														1845	penstemons & pansies
Birkenhead, W.& J.	nr. Manchester		*											*	1880 - 1900	
Blackmore & Langdon	Bath	*	*												1911 - 1922	begonias, carnations
Blake & Mackenzie, Ltd.	Liverpool		*												1935	commercial horticultural printer's catalogue
Blooms	Cambridge														1939	chrysanthemums
Blooms Nurseries, Ltd.	Norfolk											*			1949	
Boller, Henry.	London		*												1882 - 1883	succulents
Boothman, Stuart.	Berkshire		*		*							*			1939 - 1940	
Boulton Brothers	Staffordshire				*										1938 - 1939	
Brinkman Bothers, Ltd.	Chichester								*						1949	fruit trees

COUNTRY	Region/Town	General catalogue	Illustrations	Seeds	Trees & Shrubs	Bulbs	Agriculture	Vegetables	Fruit	Orchids	Aquatic & Bog	Alpines	Roses	Ferns	Dates Covered	Notes
Bull, William & Sons	London	*	*	*		*		*	*	*			*	*	1870 - 1914	Illustrations of Bull's patent plant case, stove house and fernery.
Bulley, A.K.	Cheshire			*											1925 - 1927	
Bunyard, George & Co.	Kent	*	*	*	*			*	*				*		1897 - 1926	
Burpee, W. Atlee & Co.	London		*	*											1887	American seeds for English gardens.
C																
Camla Gardens	Sussex				*							*			1938 - 1939	
Cannell, H. & Sons	Kent	*	*	*				*	*						1882 - 1898	Cacti/succulents. Portrait of Henry Cannell & Edward Banks. Some coloured front covers.
Cant, Benjamin. R.	Colchester												*		1899 - 1900	
Cant, Frank. & Co.	Colchester		*										*		1893 - 1915	Coloured front covers.
Carter, James. & Co	London	*	*	*		*	*	*	*			*			1837 - 1918	
Charlesworth, & Co. Ltd.	Sussex		*							*					1895 - 1938	
Cheal & Sons	Sussex	*	*		*								*		n.d. & 1895	
Clibrans, Ltd.	Altrincham		*		*										1937 - 1938	
Cole & Son.	Peterborough														1952 - 1953	
Constable, W.A. Ltd.	Tunbridge Wells		*			*						*			1936 - 1946	lilies

COUNTRY	Region/Town	General catalogue	Illustrations	Seeds	Trees & Shrubs	Bulbs	Agriculture	Vegetables	Fruit	Orchids	Aquatic & Bog	Alpines	Roses	Ferns	Dates Covered	Notes
Cooling, Geo. & Sons	Bath	*	*		*				*				*		1899	
Coombe Wood Nursery	Kingston Hill, Surrey															see Veitch, James.
Cooper, Robert.	Croydon	*		*											1845	see Warner & Warner
Cowan, John. & Co.	nr. Liverpool	*	*	*				*							1899	
Cranston's Nursery & Seed Co. Ltd.	Hereford				*				*						1880 - 1881	
Cuthbert, Geo.	Middlesex														n.d.	azaleas
Cypher, James.	Cheltenham	*	*							*					n.d.	
D																
Davis, B.R.	Yeovil		*												1897	begonias
Derbyshire, Henry.	Derbyshire				*										1880 - 1881	
Dicksons	Chester	*	*	*	*	*	*	*	*		*	*	*		1890 - 1924	garden tools & sundries
Douglas, James.	Surrey		*												1948 - 1949	camations; the Douglas clove
E																
Earlwood Nurseries, Ltd.	Surrey														1894 - 1902	chrysanthemums
Edmunds (Milton) Ltd.	Cambridge	*	*	*		*									1941	
Elliott, Clarence. Ltd.	Stevenage	*	*	*		*		*				*			1910 - 1926	
F																

COUNTRY	Region/Town	General catalogue	Illustrations	Seeds	Trees & Shrubs	Bulbs	Agriculture	Vegetables	Fruit	Orchids	Aquatic & Bog	Alpines	Roses	Ferns	Dates Covered	Notes
Fisher & Son, & Sibray, Ltd.	Sheffield	*	*	*	*	*		*	*						1905 - 1914	Descriptive list of kitchen & dessert apples. Gardeners' requisites.
The Forest Nurseries, Ltd.	Derbyshire				*				*						1936 - 137	Heathers; photograph of nursery
G																
Galpine, John Kingston.	Dorset	*		*	*										1782	facsimile 1983
Gartons, Ltd.	Warrington		*	*			*	*							1923 - 1926	
Gauntlett, V.N. & Co. Ltd.	Redruth	*	*		*	*					*	*		*	n.d., 1902-1907	Japanese nurseries
Gill, R. & Son	Cornwall		*												n.d.	circa 1927; Himalayan, Chinese & other rhododendrons
Girling	?														1845	see Warner & Warner
Godber, Isaac. Ltd.	nr. Bedford														1949 - 1951	chrysanthemums
Guildford Hardy Plant Nursery	Guildford	*	*									*			1900 - 1901	
H																
Harkness & Sons	Yorkshire	*	*												n.d.	1903?
Harrison, Joseph.	Norfolk														1845	see Warner & Warner
Hayes, T.R.	Crosthwaite														n.d.	
Henderson, E.G. & Son	London	*	*			*									1872	

COUNTRY	Region/Town	General catalogue	Illustrations	Seeds	Trees & Shrubs	Bulbs	Agriculture	Vegetables	Fruit	Orchids	Aquatic & Bog	Alpines	Roses	Ferns	Dates Covered	Notes
Hill, J. & Son	Middlesex		*											*	n.d. - 1908	Includes letters to/from R.L.Harrow. 1908
Hillier & Sons	Winchester				*						*		*		1913 - 1972	topiary trees
Hilling, T. & Co.	Woking				*				*			*	*		1946 - 1947	
Holden Clough Nursery	Lancashire											*			1932	
Hollett, C.G.	Sedburgh				*	*						*			1970 - 1971	heathers
Holmes, W.H.	Derbyshire														1845	calceolarias; see Warner & Warner
House, Isaac & Son	Bristol														1938	scabiosa caucasica
Hudson, W.H.	London	*		*		*		*							n.d. - 1877	special manures
Hunter, James.	Chester		*	*			*	*							1902 - 1915	Clifton Park system of farming.
I																
Ingwersen, W.E.Th.	Sussex			*								*			1926 - 1935	
J																
Jackman, George & Son	Woking	*			*	*			*			*	*		1896 - 1939	photo of nursery
Jackson, Thomas & Son	Surrey	*													1879 - 1880	
Jeffries, John & Son	Cirencester		*										*		1897 - 1898	Cotswold roses
Jones, Gavin.	Herts	*	*												1931	
Jones, H.J.	Lewisham	*	*	*				*							1899 - 1901	chrysanthemums
Jones & Sons	Shrewsbury														n.d.	1900(?) sweet peas
K																

COUNTRY	Region/Town	General catalogue	Illustrations	Seeds	Trees & Shrubs	Bulbs	Agriculture	Vegetables	Fruit	Orchids	Aquatic & Bog	Alpines	Roses	Ferns	Dates Covered	Notes
Kelway & Son	Somerset	*	*	*		*		*							1898 - 1939	coloured front covers.
Kennedy, Robert.	London		*											*	1860	exotic and indigenous ferns
Kew Topiary Nurseries	Richmond															see Klinkert, John
Keynes, J.	Salisbury														1845	dahlias; see Warner & Warner
Klinkert, John.	London	*	*		*	*						*	*		n.d. 1936 - 1945	yew & box trees, topiary
Knap Hill Nursery	Surrey		*												1933 - 1937	
Knight's Nurseries	Sussex											*			1949	
L																
Ladhams, B.	Southampton														1896	
Laing, John & Sons	London	*	*							*					1896 - n.d.	begonias, caladiums
Langford, J.	Manchester														1903	
Laxton Brothers	Bedford	*	*		*				*			*			1938 - 1939	
Letts, George Frederick & Son	Suffolk	*	*		*				*				*		1924 - 1928	
Little & Ballantyne	Carlisle	*	*	*	*	*	*	*	*						1876 - 1921	Drawing of entrance to the Knowfield Nurseries, Carlisle. 1876
Lockhart, T. & C.	London					*									1845	
Loddiges, Conrad & Sons	London	*													1818	

COUNTRY	Region/Town	General catalogue	Illustrations	Seeds	Trees & Shrubs	Bulbs	Agriculture	Vegetables	Fruit	Orchids	Aquatic & Bog	Alpines	Roses	Ferns	Dates Covered	Notes
Lord, Thomas.	S.W. Yorkshire														1907 - 1909	carnations, picotees, auriculas
Low, Hugh & Co	Middlesex	*	*		*				*	*	*		*		1896 - 1906, n.d.	orchids - 1896
Low, Stuart & co.	Middlesex		*						*	*			*		n.d. - 1937	carnations
Lucombe, Pince & Co.	Exeter	*												*	n.d.	1878(?); grape vines
Luxford, Keith, & Co,	Herts.		*												1947	chrysanthemums
M																
Mahood, Bros.	Ormskirk							*	*						n.d.	1940s (?)
Marchant, W.J.	Dorset	*			*										1937	
Mawson, Bros.	Windermere Nurseries	*	*												1907	
May, H.B. & Sons, Ltd.	Middlesex		*											*	1907 - 1913, n.d.	
Merryweather, H. & Merryweather & Sons. Ltd.	Nottinghamshire	*	*	*	*				*				*		1893 - 1917	Henry Merryweather and the Bramley seedling apple
Moore, Ltd.	Leeds		*							*					1907 - 1909	Undated catalogues; Yatton Hall orchid collection
Murray, James & Son	London	*	*	*		*									1905 - 1912	
Murrell, R.	Shepperton-on-Thames		*										*		1914 - 1921	
N																

COUNTRY	Region/Town	General catalogue	Illustrations	Seeds	Trees & Shrubs	Bulbs	Agriculture	Vegetables	Fruit	Orchids	Aquatic & Bog	Alpines	Roses	Ferns	Dates Covered	Notes
The New Plant & Bulb Co.	Colchester					*				*					1877 - 1880	Japanese lilies
O																
Osborn & Sons	London	*				*								*	1879 - 1880	
P																
Parker, Robert.	Surrey	*			*				*		*				1879	
Paul & Son	Hertfordshire	*	*									*	*		1890 - 1898	
Paul , William. & Son	Hertfordshire	*	*	*	*	*			*				*		1884 - 1917	
Peed, John. & Son	London		*												1926	stove & greenhouse
Perfect, William & John	Pontefract				*				*						1777	1972 facsimile, see catalogue entry
Perry, Amos.	Enfield	*	*	*	*	*					*	*		*	1896 - 1938	
Piper, G.W.	Sussex												*		1901 - 1903	
Prichard & Co.	Dorset											*			1913(?)	
Prichard, Maurice.	Christchurch	*	*		*	*					*	*		*	1898 - 1922	
Protheroe & Morris, Auctioneers	London									*					1895 - 1916	see main list for details of orchid collections offered for sale.
Pye, Septimus.	Lancashire														1895 - 1896	pansies, violas, picotees, carnations
R																
Reamsbottom & Co.	Middlesex		*												n.d.	

COUNTRY	Region/Town	General catalogue	Illustrations	Seeds	Trees & Shrubs	Bulbs	Agriculture	Vegetables	Fruit	Orchids	Aquatic & Bog	Alpines	Roses	Ferns	Dates Covered	Notes
Red Lodge Nursery																see Rogers, W.H. & Sons
Reeves, A. & Co.	Norwich	*							*				*		1940 - 1941	
Reuthie, G. Ltd.	Kent	*	*	*	*	*						*		*	1903 - 1977	
Rivers, T. Jnr.	Herts.												*		1839 - 1877	
Roger, R.V.	Yorkshire	*	*		*										1938 - 1939	
Rogers, R.V.	Southampton	*	*												1866	description of the nursery
Rogers, W.H. & Son, Ltd.	Southampton	*										*			1911 - 1931	
Royal Exotic Nursery																see Veitch, James.
Ryder & Son	St. Albans			*											1906 - 1937	
S																
St. John's Nursery																see Smith, Richard & Co.
Sander & Sons (includes Sander & Co. and Sander, F. & Co.)	St. Albans	*	*							*					1894 - 1914	
Schmassmann, Walter.	Herts.														1940	hardy primula
Sharpe, Charles & Co. Ltd.	Lincolnshire	*		*				*	*						1948	
Silberrad & Son	London				*								*		1901 - 1903	
Silberrad, R. & Son, Ltd.	London														1939	hydrangeas

COUNTRY	Region/Town	General catalogue	Illustrations	Seeds	Trees & Shrubs	Bulbs	Agriculture	Vegetables	Fruit	Orchids	Aquatic & Bog	Alpines	Roses	Ferns	Dates Covered	Notes
Sim, Robert.	Kent													*	circa 1880	
Simonite, Ben.	Sheffield														1888 - 1889	auriculas, picotees, carnations
Sloccock, Walter, C., Ltd	Woking				*								*		1943 - 1944	
Smith, James & Sons	Derbyshire				*								*		1900 - 1950	
Smith, Samuel.	Derbyshire	*			*							*			1939 - 1940	
Smith, Richard & Co.	Worcester	*	*	*	*	*		*	*		*	*			1865 - 1909	description of nursery, 1865
Standish & Nobel	Surrey														1850 - 1855	copy extract - hardy rhododendrons
Stansfield Brothers	Southport	*	*									*			1882 - 1891	
Stansfield, H.	Manchester		*											*	n.d. - 1907	
Stewart, D. & Son, Ltd.	Dorset				*										1939	forest trees
Sutcliffe, Thomas.	Lancashire														1908	spring bedding
Sutton & Sons	Reading	*	*	*	*	*	*	*	*			*	*		1887 - 1929	implements & sundries. 1906 centenary edition; 1901 – Martin Hope Sutton obituary.
Sydenham, Robert, Ltd.	Birmingham	*	*	*		*		*							1907 - 1928	
T																
Telford, John & George	York				*				*						1775	1972 facsimile, see catalogue entry
Thompson & Morgan	Ipswich	*	*	*		*		*				*			1895 - 1953	

COUNTRY	Region/Town	General catalogue	Illustrations	Seeds	Trees & Shrubs	Bulbs	Agriculture	Vegetables	Fruit	Orchids	Aquatic & Bog	Alpines	Roses	Ferns	Dates Covered	Notes
Thompson, William.	Ipswich	*		*											1881 - 1896	
Turner, Charles	Slough	*													1881 - 1899	
V																
Veitch, James & Son	Surrey	*	*	*	*	*	*	*	*	*	*	*	*	*	1872 - 1913	
Veitch, Robert & Son	Exeter	*	*									*			n.d.	rockwork illustrations
W																
Wallace, R. & Co	Colchester	*	*			*					*	*			1892 - 1924	Plants raised from seed collected by G, Forrest during his 1912 - 1915 China expedition. Irises
Wallace, R. & Co. Ltd.	Tunbridge Wells	*	*			*							*		1921 - 1938	
Wallis, James.	Stourbridge														1845	see Warner & Warner entry. Auriculas, carnations, picotees & pinks.
Ware, Thomas. S. Ltd.	London	*	*	*		*			*		*			*	1878 - 1900	
Ware, Thomas. S.,(1902) Ltd.	Middlesex	*	*	*		*				*					1901 - 1916	
Wargrave Plant Farm																see catalogue entry.
Warner & Warner	London	*		*											1845	
Waterer, Anthony	Woking				*										1903 - 1915	hardy American

COUNTRY	Region/Town	General catalogue	Illustrations	Seeds	Trees & Shrubs	Bulbs	Agriculture	Vegetables	Fruit	Orchids	Aquatic & Bog	Alpines	Roses	Ferns	Dates Covered	Notes
																plants
Waterer, John & Sons, Ltd.	Bagshot				*										n.d.	circa 1912 - 1923
Waterer, John & Sons & Crisp Ltd.	Berkshire	*	*	*		*		*	*		*		*		1912 - 1932	
Wells	Surrey	*	*									*			1937 - 1939	
Wells, W.																see The Earlswood Nurseries
Westwell, William & Sons	Lancashire		*												1950	dahlias
Wheatcroft Bros., Ltd.	Nottingham		*										*		1937	
Wheelwright, W.	Stourbridge														1892	auriculas
Williams, B.S.	London	*	*	*			*	*		*				*	1878 - 1897	horticultural sundries
Wood, J.	Leeds	*	*			*					*	*			1894 - 1906	
Woolman, H. Ltd.	Birmingham														1948 - 1949	begonias, chrysanthemums
Worth Park Nurseries	Surrey	*			*				*				*		1938 - 1939	
Y																
Yamanaka & Co.	London														1900	bonsai
NORTHERN IRELAND																
Dickson, Hugh.	Belfast	*	*		*				*				*		1892 - 1910	
Rodger M'Clelland & Co.	Newry	*	*		*						*	*		*	1881 - n.d.	

COUNTRY	Region/Town	General catalogue	Illustrations	Seeds	Trees & Shrubs	Bulbs	Agriculture	Vegetables	Fruit	Orchids	Aquatic & Bog	Alpines	Roses	Ferns	Dates Covered	Notes
Smith, T.	Newry	*		*	*	*			*		*	*	*	*	1891 - 1926	broom & whins
REPUBLIC of IRELAND																
Gore-Booth, Sir Josslyn																see Lissadell Nursery
Hartlands, William Baylor.	Cork	*	*			*									1888 - 1902	Portrait of W.B. Hartland.
Hogg & Robertson	Dublin		*			*									1899 - 1913	coloured front covers
Lissadell	Lissadell	*	*	*	*	*			*			*	*	*	1907 - 1931	
Pennick & co.	Nr. Dublin	*	*		*				*			*	*		n.d.	The nursery ceased trading in 1927. Catalogues include photographs of nursery.
Robertson																see Hogg & Robertson
Watson, Wm. & Sons	Dublin				*				*				*		1941 - 1942	
SCOTLAND																
A																
Anderson, Leslie. & Co.,	Edinburgh	*		*	*										1787 - 1788	garden tools
Anderson, Robert.	Edinburgh	*		*	*		*	*	*						c. 1775	

COUNTRY	Region/Town	General catalogue	Illustrations	Seeds	Trees & Shrubs	Bulbs	Agriculture	Vegetables	Fruit	Orchids	Aquatic & Bog	Alpines	Roses	Ferns	Dates Covered	Notes
Archibald, Joseph.	Edinburgh	*		*	*				*						1781	
B																
Barr & Son	Dumfries				*										1937	
Beechill Nursery	Edinburgh															see Downie, John.
Broughton Street Nursery	Edinburgh															see Dicksons & Shade
Buccleuch Nurseries	Hawick															see Forbes, John.
Burnside Nurseries	Aberdeen															see Smith, W.
C																
Cadell, A. & M.	Longniddry														n.d.	primroses
Campbell, Alexander. E.	Gourock	*													1891 - 1894	Gladioli
Campbell, Matthew.	High Blantyre	*	*												1893 - 1900	campanions & picotees; coloured front covers
Chalmers, W.	Stonehaven														1931 - 1932	viola, pansy, chrysanthemum
Chapman, M.	Stirling	*													n.d.	
Cardno & Darling	Aberdeen	*													1888 - 1889	
Cocker, James. & Sons	Aberdeen	*		*	*	*		*	*				*		1890 - 1907; 1951	
Craikleith Nursery	Edinburgh															see Ireland & Thomson
Croll, D. & W.	Broughty ferry		*										*		1892 - 1900	Coloured front covers

COUNTRY	Region/Town	General catalogue	Illustrations	Seeds	Trees & Shrubs	Bulbs	Agriculture	Vegetables	Fruit	Orchids	Aquatic & Bog	Alpines	Roses	Ferns	Dates Covered	Notes
Cuthbertson, M.	Rothesay	*		*									*		1893- 1906	1897 portrait of Michael Cuthbertson.
Cunningham, Fraser & Co.	Edinburgh	*										*			n.d.	Comely Bank Nursery.
D																
Dawyck Nursery	Dawyck														1914 - 1925	
Dicksons & Co.	Edinburgh	*			*										1807 - 1895	
Dickson, Brown & Tait	North England		*			*									1881	
Dickson & Turnbull	Perth														1874	
Dickson, James & George	Edinburgh	*			*				*						1806	Nursery at Broughton Park.
Dicksons & Shade	Edinburgh	*													1802	Nursery at Broughton Park.
Dobbie & Co., Ltd.	Rothesay & Edinburgh	*	*	*	*	*		*	*		*		*		1892 - 1924	
Downie, John.	Edinburgh	*	*												1898	stove & greenhouse plants; drawing of Beechhill Nurseries, Murrayfield
Drummond Brothers	Edinburgh	*	*	*				*							1900	
E																
Edrom Nurseries	Eyemouth	*	*												2008 - 2009	

COUNTRY	Region/Town	General catalogue	Illustrations	Seeds	Trees & Shrubs	Bulbs	Agriculture	Vegetables	Fruit	Orchids	Aquatic & Bog	Alpines	Roses	Ferns	Dates Covered	Notes
F																
Ferguson, W. & R.	Dunfermline												*		1899 - 1902	
Forbes, John.	Hawick	*	*	*	*	*		*	*				*		1885 - 1968	Descriptive list of dessert and kitchen apples - c. 1890. Portrait of J. Forbes - c. 1900.
G																
Glass, J. & A.	Edinburgh	*	*									*			n.d.	
Grieve, James. & Son	Edinburgh														1912	Redbraes Nursery
H																
Hall, Charles.	?	*													1802	
I																
Ireland & Thomson	Edinburgh	*		*				*							1892	
Irvine, Andrew.	Tighnabruaich	*											*		1892	
Irvine, Charles.	Jedburgh	*													1896	
L																
Laird, R.B. & Sons	Edinburgh	*			*	*						*			1891 - 1897	Royal Winter Garden Nursery, Haymarket; Meadow Park, Pinkhill and Beechwood Mains, Murrayfield.

COUNTRY	Region/Town	General catalogue	Illustrations	Seeds	Trees & Shrubs	Bulbs	Agriculture	Vegetables	Fruit	Orchids	Aquatic & Bog	Alpines	Roses	Ferns	Dates Covered	Notes
Laird & Dickson	Edinburgh		*									*			1937 - 1938	
Landowners' Co-operative Forestry Society, Ltd.																see Dawyck Nurseries
Lawson, Peter. & Son	Edinburgh			*			*								1870	Nursery - Inverleith Row.
Lochinch	Stranraer		*												1932	rhododendrons
M																
Meadow Park Nursery	Edinburgh															see Laird, R.B. & Sons
Menzies, John.	Dunse											*			1882 - 1895	auriculas
Methven, Thomas. & Sons	Edinburgh	*		*	*	*			*						1884 - 1901	Nurseries at Leith Walk, Warriston & Inverleith.
N																
New Golden Acre Nursery	Edinburgh															see Ireland & Thomson
O																
Oliver & Hunter	Dumfries														1938 - 1943	montbretia & heath
Ormiston & Renwick	Melrose	*			*								*		1881 - 1882	
P																
Pilrig Park Nursery	Edinburgh															see Dicksons & Co.
Pinewood Park Nursery	Aberdeen															see Reid, Benjamin & Co.

COUNTRY	Region/Town	General catalogue	Illustrations	Seeds	Trees & Shrubs	Bulbs	Agriculture	Vegetables	Fruit	Orchids	Aquatic & Bog	Alpines	Roses	Ferns	Dates Covered	Notes
Poyntzfield Herb Nursery	Dingwall														2006	aromatic and medicinal plants
R																
Redbraes Nursery																see Grieve, James & sons
Reid, Benjamin. & Co.	Aberdeen	*	*	*	*					*			*		1886 - 1919	
Rosemount Nursery	Edinburgh															see Downie, John.
Royal Exotic Nursery	Edinburgh															see Ireland & Thomson
Royal Nurseries	Hawick															see Forbes, John.
Royal Winter Garden Nursery	Edinburgh															see Laird, R.B. & Sons
Rye, R.W.																see Lochinch
S																
Scottish Horticultural Association.	Scotland	*	*												1889 - 1915	
Smellie, John.	Busby	*													1893	
Smith & Simons	Glasgow	*		*		*									1908 - 1910	sundries
Smith, Thomas. & Sons	Stranraer	*			*				*				*		1893 - 1925	
Smith, William. & Son	Aberdeen	*			*								*		1911 - 1920	
Springhill Nurseries, Ltd.	Aberdeen	*							*				*		1948 - 1977	

COUNTRY	Region/Town	General catalogue	Illustrations	Seeds	Trees & Shrubs	Bulbs	Agriculture	Vegetables	Fruit	Orchids	Aquatic & Bog	Alpines	Roses	Ferns	Dates Covered	Notes
Steel, Wm. J.	Busby														1956	
Stewart & Co. Ltd.	Edinburgh	*	*	*	*	*	*	*	*				*		1922 - 1968	
Storrie & Storrie	Dundee			*											1903	
T																
Thomson, David. W.		*	*	*		*		*							1905 - 1915	
Thomson, William & Co.	Edinburgh	*		*		*		*							1905 - 1923	implements, insecticides & manures
W																
Windlestrawlee Nursery	Edinburgh															see Thomson, D.W.
Wiseman, Edward	Elgin	*		*	*	*		*	*						1898 - 1926	
Wright, William.	Leith			*	*										1777	

The
Chemical Union, Ltd.
IPSWICH.

IPSWICH
England.

**CANARY
GUANO**
THE BEST
IN THE
WORLD
FOR GREENHOUSE AND GARDEN.