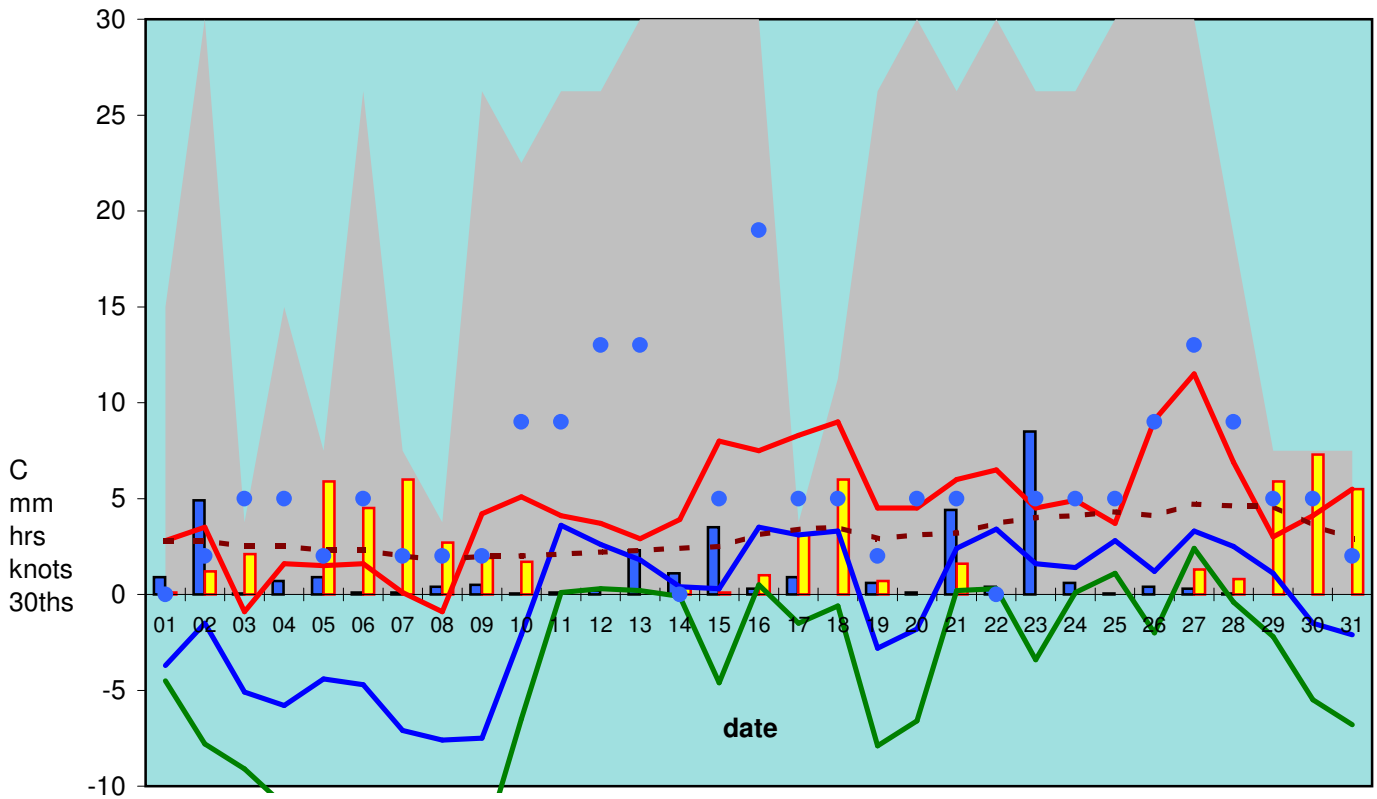


## RBGE Weather January 2010



Cloud#    
  Rainfall    
  Sunshine    
  Wind#  
 Max temp.    
  Min temp.    
  Grass min.    
  Soil temp.

# cloud (30ths) and wind (knots) are only estimated once daily at 9GMT

### Monthly summary:

	Max temp.	Min temp.	Grass min.	Soil temp.	Rain/Snow	Sunshine		
minimum	-0.9	-7.6	-13.4	1.8	0.0	0.0		
maximum	11.5	3.6	2.4	4.7	8.5	7.3	<u>total rain:</u>	<u>32.4mm</u>
mean	4.5	-0.6	-4.4	3.0	1.0	1.9	<u>total sun:</u>	<u>59.8hrs</u>

### long term averages

January	6.74	1.20	-2.48	3.27	2.14	1.72		
---------	------	------	-------	------	------	------	--	--

anomalies*	-2.20	-1.83	-1.94	-0.23	-1.09	0.21		
------------	-------	-------	-------	-------	-------	------	--	--

\* red if below, blue if above long term average

49%     112%

### averages over the past 12 months and anomalies from long term (1976-2005) averages

	average	anomalies	
air temp. (°C)	9.56	0.40	
daily rain (mm)	1.87	-0.04	98%
daily sun (hrs)	4.05	0.22	106%