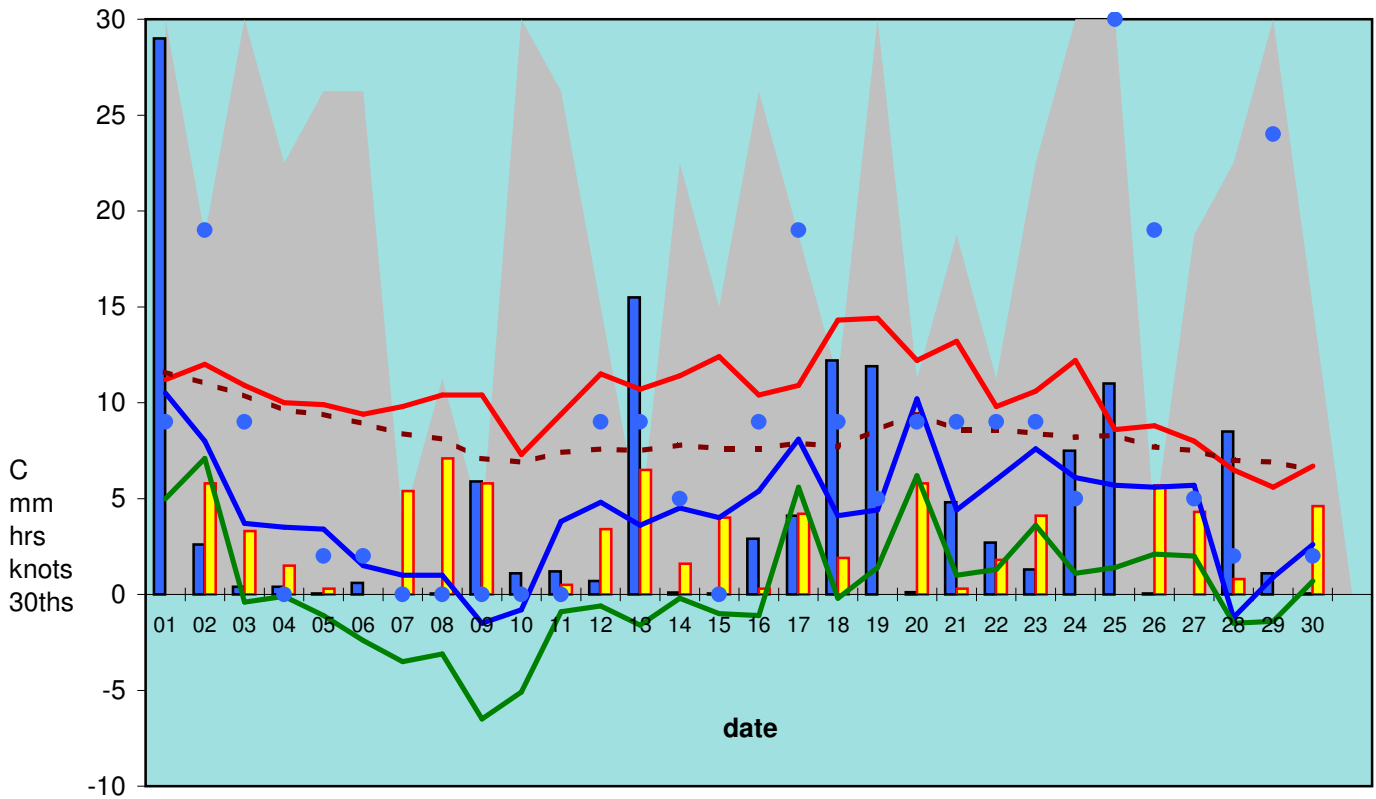


## RBGE Weather November 2009



Cloud#    
  Rainfall    
  Sunshine    
  Wind#  
 Max temp.    
  Min temp.    
  Grass min.    
 Soil temp.

# cloud (30ths) and wind (knots) are only estimated once daily at 9GMT

### Monthly summary:

	Max temp.	Min temp.	Grass min.	Soil temp.	Rainfall	Sunshine	
minimum	5.6	-1.5	-6.5	6.5	0.0	0.0	
maximum	14.4	10.5	7.1	11.6	29.0	7.1	<u>total rain:</u> <u>125.9mm</u>
mean	10.3	4.2	0.3	8.3	4.2	2.6	<u>total sun:</u> <u>79.0hrs</u>

### long term averages

<i>November</i>	<i>9.67</i>	<i>3.67</i>	<i>-0.16</i>	<i>6.58</i>	<i>2.00</i>	<i>2.38</i>
-----------------	-------------	-------------	--------------	-------------	-------------	-------------

anomalies*	0.62	0.55	0.42	1.70	2.20	0.25
------------	------	------	------	------	------	------

\* red if below, blue if above long term average

210%     111%

### averages over the past 12 months and anomalies from long term (1976-2005) averages

	average	anomalies	
air temp. (°C)	9.85	0.69	
rain (mm)	1.84	-0.07	96%
sun (hrs)	4.16	0.32	108%