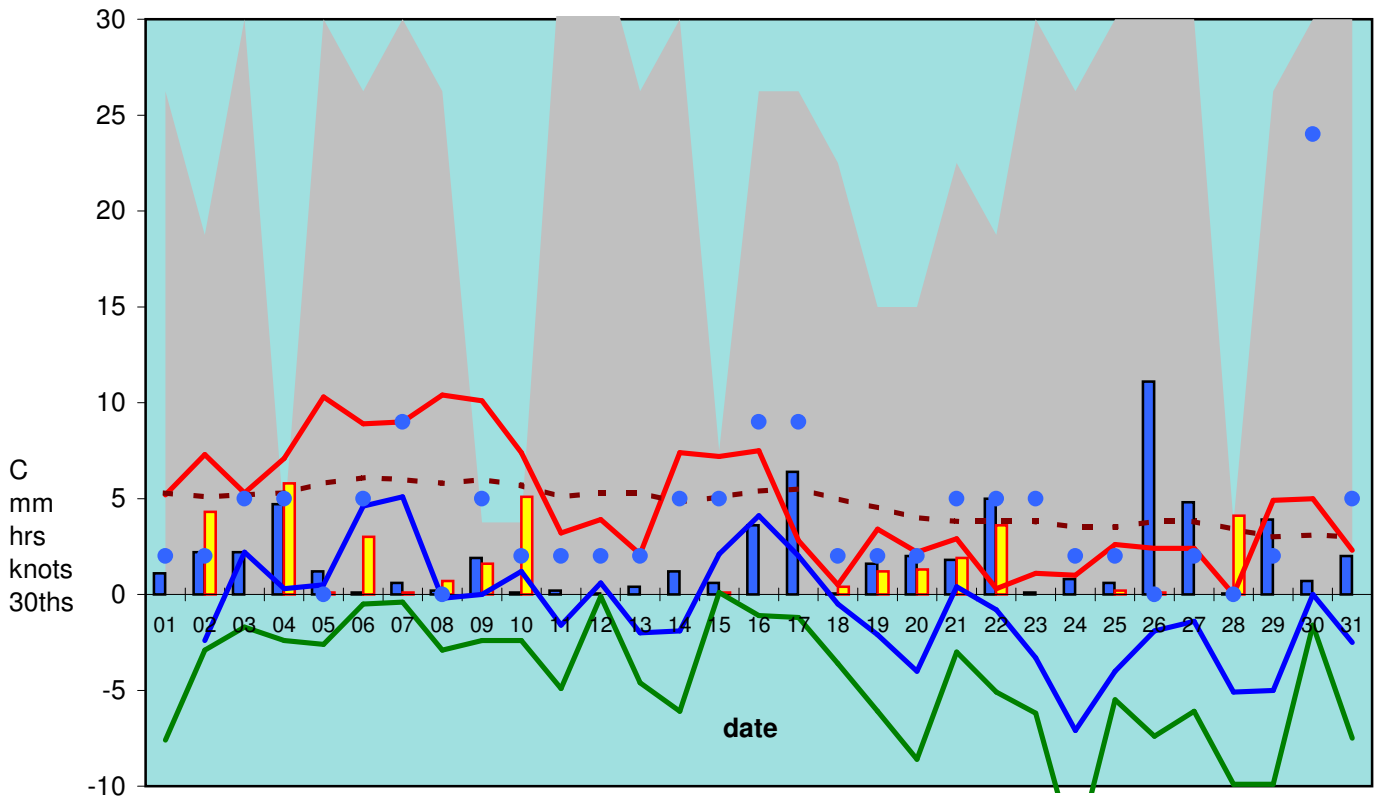


## RBGE Weather December 2009



Cloud#    
  Rainfall    
  Sunshine    
  Wind#  
 Max temp.    
  Min temp.    
  Grass min.    
  Soil temp.

# cloud (30ths) and wind (knots) are only estimated once daily at 9GMT

### Monthly summary:

	Max temp.	Min temp.	Grass min.	Soil temp.	Rain/Snow	Sunshine		
minimum	0.0	-7.1	-13.7	3.0	0.1	0.0		
maximum	10.4	5.1	0.1	6.1	11.1	5.8	<u>total rain:</u>	<u>61.3mm</u>
mean	4.7	-0.8	-4.4	4.7	2.0	1.1	<u>total sun:</u>	<u>33.6hrs</u>

### long term averages

*December*     7.07     1.65     -2.14     4.27     2.06     1.49

anomalies\*     -2.36     -2.40     -2.31     0.41     -0.08     -0.40

\* red if below, blue if above long term average

96%     73%

### averages over the past 12 months and anomalies from long term (1976-2005) averages

	average	anomalies	
air temp. (°C)	9.70	0.53	
rain (mm)	1.90	-0.02	99%
sun (hrs)	4.16	0.32	108%